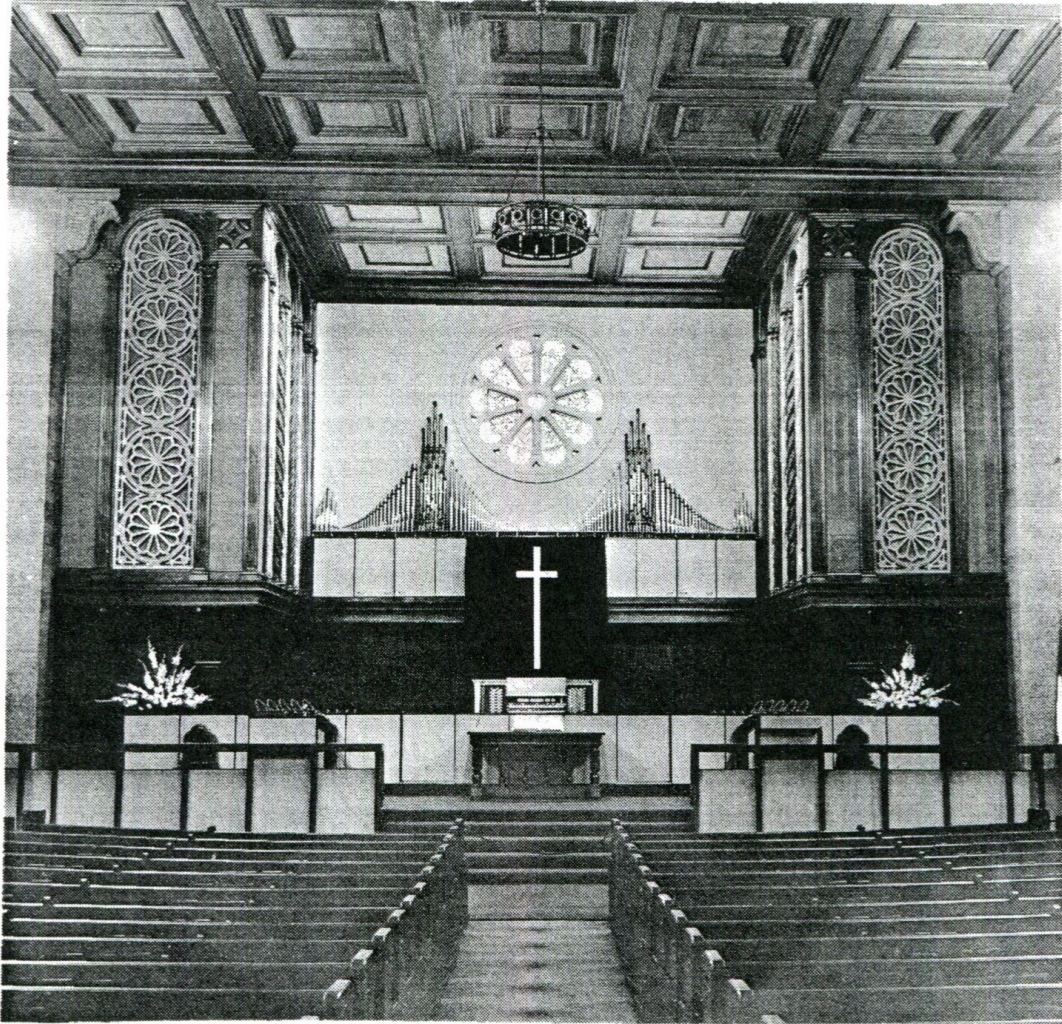


First Congregational Church

HARRISON AT TWENTY-SIXTH STREET
OAKLAND, CALIFORNIA



Service of Dedication

Sunday, October 5, 1958, at 4:00 P.M.

DR. CLARENCE REIDENBACH	Minister
REV. ELMER J. HOSTETLER.....	Associate Minister
HAROLD C. YOUNGBERG	Musical Director
DAVID SCHAUB	Organist

THE CENTENNIAL MEMORIAL ORGAN

DEDICATED TO THE GLORY OF GOD
OCTOBER FIVE
1958

TO COMMEMORATE 100 YEARS OF CHRISTIAN SERVICE TO THE
PEOPLE OF OAKLAND BY THE FIRST CONGREGATIONAL CHURCH
OF OAKLAND

IN MEMORY OF
GEORGE GRICE SHERWOOD

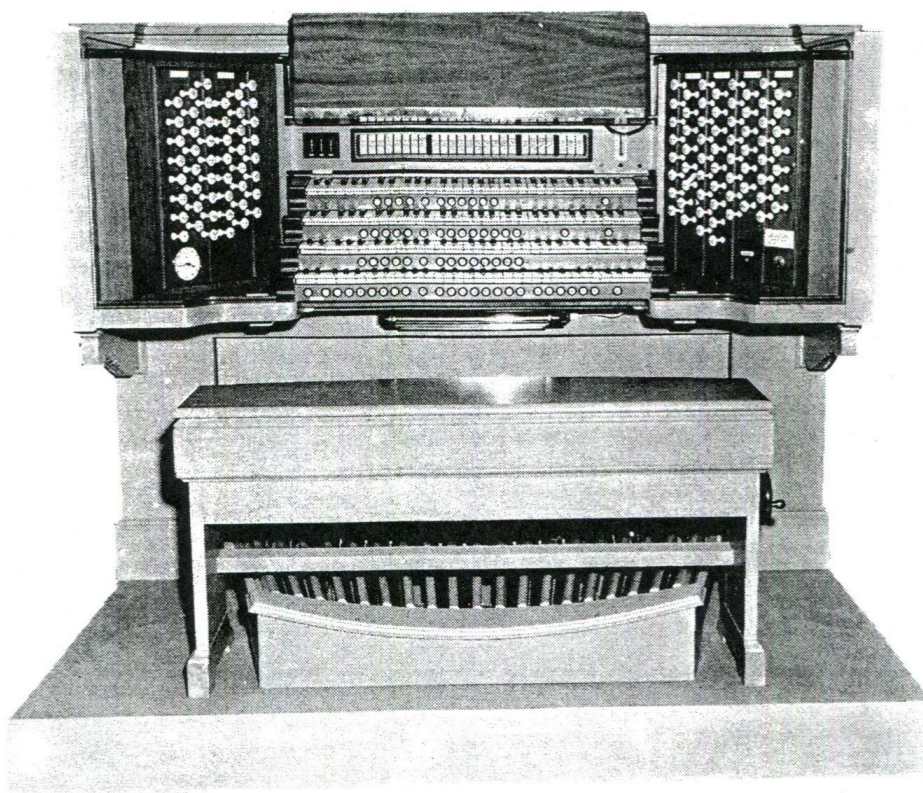
BY
HIS LOVING WIFE, ELLEN CAREY SHERWOOD, AND
DAUGHTERS, ANNE AND MARGARET, AND BY
HIS BUSINESS ASSOCIATES — GEORGE HAVAS, ALONZO B.
ORDWAY, THOMAS M. PRICE AND EUGENE E. TREFETHEN, JR.

IN MEMORY OF
EWELL F. SCOTT

BY
CHURCH MEMBERS AND FRIENDS

IN MEMORY OF
ALL DEPARTED MEMBERS OF THIS CHURCH

BY
MANY INDIVIDUAL MEMBERS AND THE MEMBERSHIP AT LARGE
AND AS EVIDENCE OF THE LOVE AND AFFECTION
BORNE THIS CHURCH.



The Organ was constructed and installed by M. P. Moller, Inc., Hagerstown, Maryland, from specifications suggested by Dr. Charles Greenwood, Mr. Newton Pashley and Professor Herbert Nanney, with valuable advice and assistance from Mr. Walter B. Kennedy and Mr. Richard Purvis. The final reconciliation was made by Mr. Roy C. Brown and Mr. Eugene Poole, West Coast Representative of M. P. Moller, Inc., whose constant friendly assistance and cooperation are gratefully acknowledged.

We wish to give special thanks to Mr. Thomas M. Price for his untiring efforts in securing this magnificent instrument for the use of this church and the community.

We also wish to pay tribute to Mr. Roy C. Brown, whose valuable knowledge and whose investigation and research assisted greatly in the selection made by the Organ Committee.

The Organ Committee: Mr. Thomas M. Price, Chairman; Mrs. Joseph A. Jenkins, Mrs. George S. Parry, Mrs. Edgar J. Touraine, Mrs. Glen Tuttle, Miss Lillian Sidey, Mr. George R. Hunter, Mr. Roy C. Brown and Mr. Rudolph Jenny.

The Music Committee: Mr. George R. Hunter, Chairman; Mrs. George R. Hunter, Mrs. Joseph A. Jenkins, Mrs. George S. Parry, Mrs. W. O. Gennert, Mrs. Roy C. Brown and Mr. Roy C. Brown.

The Organ was made possible through the generosity of many people, as stated on the Memorial Plaque to be placed in the Narthex, which is inscribed as shown on the last page.

SPECIFICATIONS

GREAT ORGAN (Unenclosed Division)

Montre	16'	61 pipes
Diapason I	8'	61 pipes
Bourdon	8'	61 pipes
Octave	4'	61 pipes
Rohrflöte	4'	61 pipes
Twelfth	2-2/3'	61 pipes
Fifteenth	2'	61 pipes
Furniture	IV Ranks	244 pipes

GREAT ORGAN (Enclosed Division)

Doppelflöte	8'	61 pipes
Diapason II	8'	61 pipes
Gemshorn	8'	61 pipes
Fugara	4'	61 pipes

SWELL ORGAN

Flute Conique	16'	68 pipes
Geigen Principal	8'	68 pipes
Gedeckt	8'	68 pipes
Viole de Gamba	8'	68 pipes
Viole Celeste	8'	68 pipes
Flauto Dolce	8'	68 pipes
Flauto Dolce Celeste	8' T. C.	56 pipes
Principal	4'	68 pipes
Harmonic Flute	4'	68 pipes
Flute Twelfth	2-2/3'	61 pipes
Flautino	2'	61 pipes
Plein Jeu	III Ranks	183 pipes
Fagotto	16'	68 pipes
Vox Humana	8'	68 pipes
Trompette	8'	68 pipes
Oboe	8'	68 pipes
Clarion	4'	68 pipes
Tremulant		
Brass Trumpets	16'	73 notes
Brass Trumpets	8'	73 notes
Brass Trumpets	4'	61 notes

CHOIR ORGAN

Viola Pomposa	8'	68 pipes
Viola Celeste	8'	68 pipes
Concert Flute	8'	68 pipes
Erzahler	8'	68 pipes
Erzahler Celeste	8' T. C.	56 pipes
Koppelflöte	4'	68 pipes
Nasard	2-2/3'	61 pipes
Blockflöte	2'	61 pipes
Tierce	1-3/5'	61 pipes
Cymbal	III Ranks	183 pipes
English Horn	16'	68 pipes
Krummhorn	8'	68 pipes
Schalmei	4'	68 pipes
Chimes	Deagan D	21 tubes
Tremulant		

CHANCEL ORGAN (Unenclosed)

Nachthorn	8'	61 pipes
Spitzprinzipal	4'	61 pipes
Nasat	2-2/3'	61 pipes
Hohlflöte	2'	61 pipes
Larigot	1-1/3'	61 pipes
Sifflöte	1'	61 pipes
Cornet	III Ranks	183 pipes
Regale	8'	61 pipes
Tremulant		
Brass Trumpets	16'	85 pipes
Brass Trumpets	8'	73 notes
Brass Trumpets	4'	61 notes

CHANCEL ORGAN (Choir Manual)

(All stops of Chancel Organ duplicated by drawknobs in choir division)

PEDAL ORGAN

Contrebasse	16'	32 pipes
Bourdon	16'	44 pipes
Violone	16'	44 pipes
Montre	16' From Great	32 notes
Quint	10-2/3'	32 pipes
Flute Conique	16' From Swell	32 notes
Erzähler	16' From Choir	12 pipes
Lieblighgedeckt	16' From Swell	12 pipes
Octave	8'	32 pipes
Open Flute	8'	44 pipes
Bourdon	8'	32 notes
Violone	8'	32 notes
Flute Conique	8' From Swell	32 notes
Choral Bass	4'	44 pipes
Open Flute	4'	32 notes
Choral Bass	2'	32 notes
Mixture	III Ranks	96 pipes
English Horn	16' From Choir	32 notes
Fagotto	16' From Swell	32 notes
Fagotto	8' From Swell	32 notes
Bombarde	32'	68 pipes
Bombarde	16'	32 notes
Bombarde	8'	32 notes
Bombarde	4'	32 notes
Chimes	From Choir	

COUPLERS

Swell 16'	Choir 16'	Chancel to Swell
Swell Unison	Choir Unison	
Swell 4'	Choir 4'	Chancel to Pedal
Swell to Great 16'	Choir to Great 16'	Chancel-Choir to Swell 16'
Swell to Great	Choir to Great	Chancel-Choir to Swell
Swell to Great 4'	Choir to Great 4'	Chancel-Choir to Swell 4'
Swell to Choir 16'	Choir to Pedal	Chancel-Choir to Great
Swell to Choir	Choir to Pedal 4'	
Swell to Choir 4'		Chancel-Choir to Pedal
Swell to Pedal	Chancel 16'	
Swell to Pedal 4'	Chancel Unison	
	Chancel 4'	
Great 16'	Chancel to Great 16'	
Great 4'	Chancel to Great	
	Chancel to Great 4'	

ADJUSTABLE COMBINATIONS

(Remote Control Mechanism — Capture System)

Pistons No. 1-2-3-4-5-6-7-8	Affecting Great Organ
Pistons No. 1-2-3-4-5-6-7-8	Affecting Swell Organ
Pistons No. 1-2-3-4-5-6-7-8	Affecting Choir Organ
Pistons No. 1-2-3-4-5-6	Affecting Chancel Organ
Pistons No. 1-2-3-4-5-6	Affecting Chancel-Choir Stops
Pistons No. 1-2-3-4-5-6-7-8	Affecting Pedal Organ (duplicated by toe studs)
Pistons No. 1-2-3-4-5-6-7-8-9-10	Affecting Full Organ (duplicated by toe studs)
Pistons No. 1-2-3-4	Affecting Couplers
General Cancel Piston	

PEDAL MOVEMENTS

Great to Pedal, Reversible (duplicated by manual piston)
Swell to Pedal, Reversible (duplicated by manual piston)
Choir to Pedal, Reversible (duplicated by manual piston)
Chancel to Pedal, Reversible (duplicated by manual piston)
Balanced Expression Pedal — Swell Organ
Balanced Expression Pedal — Great Organ (Enclosed Division)
Balanced Expression Pedal — Choir Organ
Balanced Crescendo Pedal
Sforzando, Reversible (duplicated by manual piston)
All Swells to Swell, Reversible (duplicated by manual piston)
Bombarde 32' Reversible (duplicated by manual piston)

MECHANICALS

Expression Indicator, Disc (three)
Crescendo Indicator, Thermometer type
Sforzando Indicator, Light
Action current test light
Signal light
All Swells Indicator, Light

ACCESSORIES

Adjustable Organ Bench
Music rack, manual and pedal Lights
Electric Clock
Momentary contact Motor Switch
Moveable Console Platform and accessories
Electric Motor, Blower and action power Unit of ample capacity
Imported English Manual keys

