



The Organ
at
St. Matthew Lutheran Church
HANOVER • PENNSYLVANIA

St. Matthew Lutheran Church

30 W. Chestnut Street
Hanover, Pennsylvania 17331
(717) 637-7101
Fax: (717) 637-4961
E-mail: stmatt@netrax.net

The ORGAN is in truth the grandest, the most daring, the most magnificent of all instruments invented by human genius. It is a whole orchestra in itself. It can express anything in response to a skilled touch. Surely it is, in some sort, a pedestal on which the soul poises for a flight forth into space, essaying on her course to draw picture after picture in an endless series, to paint human life, to cross the Infinite that separates Heaven from Earth! And the longer a dreamer listens to those giant harmonies, the better he realizes that nothing save this hundred-voiced choir on earth can fill all the space between kneeling men and a God hidden by the blinding light of Sanctuary. Out of the daylight, out of the dim silence broken by the chanting of a choir in response to the thunder of the organ, a veil is woven for God, and the brightness of His attributes shines through it.

—Honoré de Balzac

An Organ Endowment Fund has been established to help with the maintenance of this great treasure. Gifts to the Fund are most welcome.

Recordings on cassette and compact disc of this organ can be purchased through the Church Office.

Resumé of the Development of the Organ

1925

The original organ was installed in the new church by the Austin Organ Company. This instrument comprised five divisions, contained 87 speaking stops and nearly 5000 pipes, controlled by a four manual console.

1929

The organ was enlarged by the addition of 2,800 pipes and a new console was installed.

1931

The Solo Organ was moved to a new chamber above the chancel, and increased to 31 ranks. In this chamber were also placed the new Pedal Bombardes, Contra Bourdon, and a Pedal Mixture of five ranks. Another new chamber was built above the roof of the church to house a new String Organ of 18 ranks. A new Celestial Organ of 18 ranks was installed in the gallery chamber which formerly contained the Solo division.

1934

Tonal improvements were made in the Great and Swell Organs, and a brilliant new trumpet for the Swell Organ was added.

1964

The Organ was completed by the installation of an independent Pedal division in a new chamber behind the Swell Organ. Selective tonal revisions were made throughout the organ including the new Trompette Royale on 20-inch pressure installed in the Solo Organ. The console was returned to the factory for total rebuilding.

1971

Several ranks were added, bringing the total to 231, controlled by 239 stops. This increased the number of pipes to 14,341.

1982

Through an action of the Church Council, in consultation with the Minister of Music and the Austin Organ Company, the organ was declared complete in February, 1982. The estimated value of the instrument is in excess of \$1,500,000.

1988

A 198-bell Maas-Rowe Carillon was added to the organ. The three-octave carillon includes: Symphonic Carillon, Flemish Bells, Harp, Celeste, English Bells (major), English Bells (minor), Bourdon Bells (16'), Upper Minor Bells (4'). The carillon is playable from the Solo and Great Keyboards, as well as the Pedal. Memorials covered the cost of this instrument.

Organists of St. Matthew

J. Herbert Springer
(1917 - 1968)

James E. Derr
(1968 - 1974)

Thomas W. D. Guthrie
(1974 - 1980)

Scott G. Fredericks
(1980 -)

Margie Lee - Associate Organist
(1996 -)

The St. Matthew Organ

St. Matthew Lutheran congregation has had a continuous history since its organization on April 14, 1743. The present church edifice was completed in 1924, and is the fifth structure in which the congregation has worshiped during its long, continuous history. The organ for this fifth church was conceived and planned by J. Herbert Springer, organist of the church and given by Mrs. Clara Glatfelter Moul. The original instrument had a scope of 87 speaking stops, and nearly 5,000 pipes, and was constructed by the Austin Organ Company of Hartford, Connecticut. It was dedicated on January 13, 1925. The divisions of the organ were placed in chambers on both sides of the chancel, and on both sides of the gallery. Over the years it has been enlarged to the extent that it ranks high among the largest organs in the world.

In 1929, brighter mixtures were added to the Great and Swell divisions; there were additional reeds, and many ranks of soft flutes and strings. The Echo organ was increased from 10 to 21 ranks. In all, about 2,800 pipes were added. A new console was necessary at the time. While this work was in progress, the solution for a long-time problem was found. The Solo organ of 6 ranks had been placed, because of lack of space, in a chamber above the rear gallery, away from the main organ in the front of the nave. It was discovered that above the ceiling of the chancel was an unused loft where an ideal Solo chamber could be built. Mrs. Moul was again enthusiastic in her cooperation. A grill ceiling was built over the chancel, a large organ chamber constructed, the Solo Organ moved and increased to 31 ranks. In this chamber were also placed the new Pedal Bombardes, the Contra Bourdon, and a Pedal Mixture of five ranks. Another new chamber was built above the roof of the church to house a new String organ of 18 ranks, with tonal egress through the grills of the chancel ceiling. In the old Solo chamber above the gallery, a new Celestial organ of 18 ranks was installed. These additions totaled about 5,000 pipes. The organ was rededicated on December 1, 1931.

By this time, the fine old German organ music of the seventeenth and eighteenth centuries was being re-discovered, appreciated and played. This intricate polyphonic music sounded well only on an organ of bright clear tone. The need was felt for still more brilliance in the higher pitched ranks of the organ. In 1934, the Great Diapason chorus, new mixtures in both Great and Swell organs, and a brilliant new trumpet for the Swell were installed and artistically finished in the church.

Several decades passed without further change to the instrument, although there remained a bequest from the original donor for the completion of Mr. Springer's plans. In 1959 it became possible to proceed with its final stage, i.e., namely a proper, independent Pedal division. This involved the construction of a new chamber behind the Swell Organ, which would permit an independent tone opening into a future transept provided for in the original building plans and structurally prepared for in the north wall of the nave. This new section comprised of 14 ranks was completed and dedicated in 1964. Until the realization of an independent transept opening, the tonal egress of this division continues through the swell openings.

During this intervening period from 1934, the renaissance in organ building in America continued to gain momentum, and so it was decided that further tonal changes in other sections of the organ would be essential for compatibility with the new Pedal division. Therefore in the Choir Organ, 18 ranks were replaced by new pipes to provide some Baroque registers and to create a foil to the Great; in the Great Organ, the mixtures were reworked and augmented and three new ranks of flutes were added; in the Swell Organ, strings were replaced and revoiced, selected reeds were revoiced; in the Solo Organ the old Tuba Magna was replaced by a grand Trompette Royale on 20-inch pressure. Other minor changes were made in other divisions. To accommodate extensive additions and alterations, the console required factory rebuilding. Since 1964 a few special ranks have been added, along with a Cymbelstern of 4 bells. Also the tower belltones have been made playable from the console. Wind is supplied by four blowers which have a total of 37 horse power. The main blower is located in the basement. The remaining three are located in the bell tower above the Echo chamber supplying pressures varying from 7" to 20". Key Current is supplied by an Orgelectra 50-amp. rectifier.

This instrument was built and dedicated that its music might resound to the Glory of God and to the uplifting of God's people in worship. It was also the desire of the donor and the earnest hope of the designer-organist that its beautiful and glorious tones might give inspiration and pleasure to many beyond the membership of the St. Matthew congregation.

Organ Specifications

Great Organ

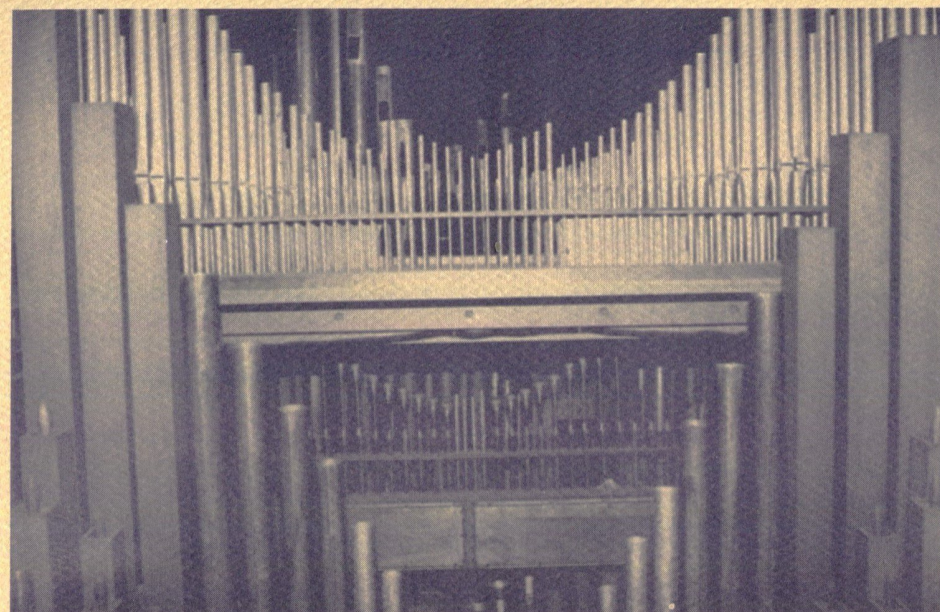
Manual II 7" Wind Pressure

Pipes		Pipes	
16' Double Diapason	61	3 1/5' Tenth	61
16' Bourdon	85	2 2/3' Twelfth	61
8' First Diapason	61	2' Superoctave	61
8' Second Diapason	61	2' Waldflöte	61
8' Harmonic Flute	61	1 3/5' Seventeenth	61
8' Clarabella	61	IV-VI Mixture 12-15-19-22	330
8' Stopped Flute (Bourdon)	61	V Fourniture	305
8' Violoncello	61	15-19-22-26-29	
8' Gemshorn	61	IV Scharf 22-26-29-33	244
8' Gemshorn Celeste	61	16' Double Trumpet	73
5 1/3' Quint	61	8' Trumpet (16')	
4' First Octave	61	8' Tromba	73
4' Second Octave	61	4' Clarion (Tromba)	
4' Flute Ouverte	61	Carillon (Maas-Rowe)	
4' Lieblichflöte (Bourdon)		37 notes	

Swell Organ

Manual III 7" Wind Pressure

Pipes		Pipes	
16' Contra Geigen	73	4' Dulcet (16')	
16' Lieblich Gedeckt	73	4' Dulcet Celeste (8')	
16' Double Dulciana	97	2 ² / ₃ ' Rohrnasat (Inverted	61
8' Diapason	73	Chimney)	
8' Holzgedeckt	73	2' Fifteenth	61
8' Rohrflöte (Inverted	73	2' Piccolo	61
Chimney)		1 ³ / ₅ ' Tierce	61
8' Quintadena	73	1 ¹ / ₃ ' Larigot	61
8' Harmonic Flute	73	V Plein Jeu	305
8' Zartflöte	73	12-15-19-22-26	
8' Flute Celeste—2 rks.	134	V Sesquialtera	305
8' Dulciana (16')		12-15-17-19-22	
8' Dulciana Celeste	73	III-IV Acuta 24-26-29	220
8' Violin	73	16' Contra Fagotto	73
8' Viole de Gamba	73	16' Heckelphone	73
8' Viole Celeste	73	8' Harmonic Trumpet	73
8' Salicional	73	8' Cornopean	73
8' Voix Seraphique—2 rks.	134	8' Oboe	73
4' First Octave	73	8' English Horn	73
4' Second Octave	73	8' Vox Humana	61
4' Flauto Traverso	73	4' Clarion	73
4' Chimney Flute	73	4' Hautbois Octaviant	61
4' Violina	73	Tremolo	



Choir Organ

Manual I 7" Wind Pressure

Pipes		Pipes	
16' Flute Conique	85	2' Blockflöte	61
16' Contra Viola	73	1 ³ / ₅ ' Tierce	61
8' Geigen Principal	73	1 ¹ / ₃ ' Larigot	61
8' Viola da Gamba	73	1' Siffflöte	61
8' Quintaten	73	IV Plein Jeu 15-19-22-26	244
8' Chimney Flute	73	III Zimbel 36-40-43	183
8' Flute Conique (16')		16' Baryton	73
8' Flute Celeste	t.c. 61	8' Trompette	73
8' Dulciana	73	8' Oboe d'Amore	73
8' Unda Maris	t.c. 49	8' Clarinet	73
4' Principal	73	8' Regal	61
4' Viola d'Amore	61	8' Vox Humana	61
4' Flute d'Amour	73	4' Rohr Schalmel	73
4' Waldflöte	73	Harp (Deagan) 61 Bars	
2 ² / ₃ ' Nasard	61	Tremolo	

Solo Organ

Manual IV 10" Wind Pressure

Pipes		Pipes	
16' Bourdon	73	16' Bass Trombone	85
8' Diapason	73	16' Bass Clarinet	73
8' Grossflöte	73	* 8' Trompette Royale	73
8' Doppelflöte	73	8' Tuba Sonora	73
8' Orchestral Flute	73	8' Trompette Militaire	73
8' Dulzflöte	73	8' Trombone (16')	
8' Gamba	73	* 8' Orchestral Horn	73
8' Gamba Celeste	73	8' French Horn	73
8' Violoncello	73	8' Corno di Bassetto	73
8' Violoncello Celeste	73	8' Bassoon	73
4' Octave	73	8' Orchestral Oboe	61
4' Flute Ouverte	73	4' Clarion	73
4' Zauberflöte	73	8' Harmonic Trumpet	
2 ² / ₃ ' Harmonic Stopped	61	(Swell)	
Twelfth		Carillon (Maas-Rowe)	
2' Piccolo	61	37 notes	
II Terzian 17-19	122	Tremolo	
IV Fourniture 12-15-19-22	244	* 20" Wind	

Celestial Organ

7" Wind Pressure

	Pipes		Pipes
16' Contra Salicional	61	4' Flauto Mistico—2 rks.	122
8' Diapason	61	II Rauschquint 12-15	122
8' Hohlflöte	61	8' Tromba	61
8' Unda Maris I—2 rks.	122	16' Vox Humana I	73
8' Unda Maris II—2 rks.	122	8' Vox Humana (I)	
8' Aeoline	61	8' Vox Humana II	73
8' Voix Celestes—2 rks.	122	4' Vox Humana (II)	
4' Octave	61	Chimes (Mayland) 25 Tubes	
4' Harmonic Flute	61	Celestial Harp (Austin) 61 Bars	

The Celestial Organ is a floating division playable on any manual.

String Organ

10" Wind Pressure

	Pipes		Pipes
16' Double Violes—2 rks.	122	8' Violas d'Amore—2 rks.	122
8' Violes d'Orchestre I— 2 rks.	122	8' Violes Sourdines—2 rks.	122
8' Violes d'Orchestre II— 2 rks.	122	4' Octave Viols—2 rks.	122
8' Violins—2 rks.	122	4' Viola d'Amore	61
		III Cornet de Violes	183
		10-12-15	
		8' Vox Humana	61
		Cymbelstern (Klann) 4 Bells	

The String Organ is a floating division playable on any manual.

Echo Organ

7" Wind Pressure

	Pipes		Pipes
16' Quintaten	61	4' Dulcet Celeste	61
8' Keraulophone	61	2' Piccolo d'Amore	61
8' Muted Gemshorn	61	III Etherial Mixture	183
8' Melodia	61	10-12-15—Solo Only	
8' Lieblich Gedeckt	61	16' Waldhorn—Great Only	73
8' Flauto Dolcissimo	61	8' Trompette	61
8' Flute Celeste	49	8' Corno d'Amore	
8' Viola da Gamba	61	(Waldhorn)	
8' Viole Aetheria	61	8' Vox Humana	61
8' Vox Angelica	49	Celestial Harp (Celestial)	
4' Fernflöte	61	—Great Only	
4' Violetta—Solo Only	61	Chimes (Celestial)—Great	
4' Dulcet	61	Only	
		Tremolo	

The Echo Organ is duplexed for Great and Solo manuals.

Pedal Organ

	Pipes		Pipes
32' Contra Bourdon (Solo ext.)	12	8' Dulciana (Swell)	
16' Holzprincipal	32	5 1/3' Twelfth	32
16' Diapason (Great Double Diapason)		4' Super Octave (Great Double Diapason)	
16' Violone	44	4' Choral Bass	32
16' Geigen Principal (Swell)		4' Nachthorn	32
16' String Celeste (String)— 2 rks.		2' Blockflöte	32
16' Viola (Choir)		2' Kleine Octav	32
16' Dulciana (Swell)		V Grand Cornet	160
16' Flute Conique (Choir)		12-15-17-19-22	
16' Bourdon (Great)		IV Cymbale 22-26-29-33	128
16' Lieblich Gedeckt (Swell)		32' Contra Bombarde	32
10 2/3' Quint	32	16' Bombarde	44
8' Octave (Great Double Diapason)		16' Trombone (Great)	
8' Principal	32	16' Fagotto (Swell)	
8' Gedeckt	32	16' Baryton (Choir)	
8' Flute Conique (Choir)		8' Bombarde (16')	
8' Violoncello (Violone 16')		8' Bassoon (Solo)	
8' Violes Celestes (Swell)— 2 rks.		8' Trombone (Great)	
		4' Clarion (Swell Harmonic Trumpet)	
		4' Trompette (Choir)	
		4' Rohr Schalmey (Choir)	
		Carillon (Maas-Rowe)	
		Bourdon (16')	

Gallery Pedal

	Pipes		Pipes
16' Bourdon (Echo)	44	8' Octave Bourdon (16')	
16' Quintaten (Echo)		8' Flauto Dolce (Echo)	
16' Viola (Echo Viola da Gamba ext.)	12	8' Viole (Echo Viole Aetheria)	
16' Salicional (Celestial)		Chimes (Celestial)	



Console Appointments

Total pipes in organ, 14,341; Ranks, 231; Speaking stops, 239; Couplers, 48; Stop-keys on Console, 293; Adjustable Pistons, 90 (52 with second touch for Pedal). Manual Disposition: I Choir; II Great, Great Echo; III Swell; IV Solo, Solo-Echo. (Celestial & String divisions are playable from all manuals).

10 Adjustable Pistons controlling on first touch stops of Great

12 Adjustable Pistons controlling on first touch stops and couplers of Swell

10 Adjustable Pistons controlling on first touch stops of Choir

10 Adjustable Pistons controlling on first touch stops of Solo

5 Adjustable Pistons controlling on first touch stops of Solo-Echo

All of the above pistons have second touch for Pedal stops and couplers.

14 Adjustable Pistons controlling all stops and couplers

8 Adjustable Pistons controlling stops of Pedal

5 Adjustable Pistons controlling stops and couplers of String

5 Adjustable Pistons controlling stops and couplers of Celestial

2 Adjustable Pistons controlling couplers of Great and Great-Echo

2 Adjustable Pistons controlling couplers of Solo and Solo-Echo

2 Adjustable Pistons controlling couplers of Choir

General Cancel on right Choir key-cheek

Balanced Echo and String Pedal (Left to Right)

Balanced Solo and Celestial Pedal

Balanced Swell and Master Pedal (optional dual control)

Balanced Choir and Great Pedal (optional dual control)

Balanced Crescendo Pedal (This pedal, and likewise Sforzando, will automatically cut out tremolos, celestes, and percussion stops without moving stop-keys.)

Indicators for all balanced pedals

Sforzando toe-piston reversible, with light indicator

Sforzando button reversible, on left Choir key-cheek

Great to Pedal reversible

Choir to Pedal reversible

Swell to Pedal reversible

Solo to Pedal reversible

Pedal coupler, String coupler, and Celestial coupler reversible are also provided beneath the respective manuals.

Toe Piston—Trompette Royale reversible

Toe Piston—Swell to Great reversible

Toe Piston—Solo to Great reversible

Toe Piston—16 ft. Stops Off

Toe Piston—Pedal Couplers Off

Toe Piston—Celestial Off

Toe Piston—String Off

Toe Piston—Master Swell reversible, with light indicator

General Pistons 1-7 duplicated on toe pistons

Pedal Pistons 1-8 duplicated on toe pistons

Solo Terzian (Ranks separation on key-cheek)

Master Swell on stop-key, which permits setting on general pistons

Selective shade controls, enabling divisional swells to be transferred to various shoes. Celestial to Echo; Celestial to Swell; Celestial to Choir; String to Solo; String to Swell; String to Choir; Echo to Choir; Echo to Swell; Solo to Choir.

Optional Dual Control for Chancel and Nave Shade tone openings

Cymbelstern (on key-cheek)

Maas-Rowe Carillon Bourdon (on key-cheek)

