



# Smithsonian Institution

**Series Title:**

Drawings

**Collection Title:**

Wurlitzer Company Records

**Repository:**

National Museum of American History

**URL:**

[https://edan.si.edu/slideshow/viewer/?eadrefid=NMAH.AC.0469\\_ref4417](https://edan.si.edu/slideshow/viewer/?eadrefid=NMAH.AC.0469_ref4417)

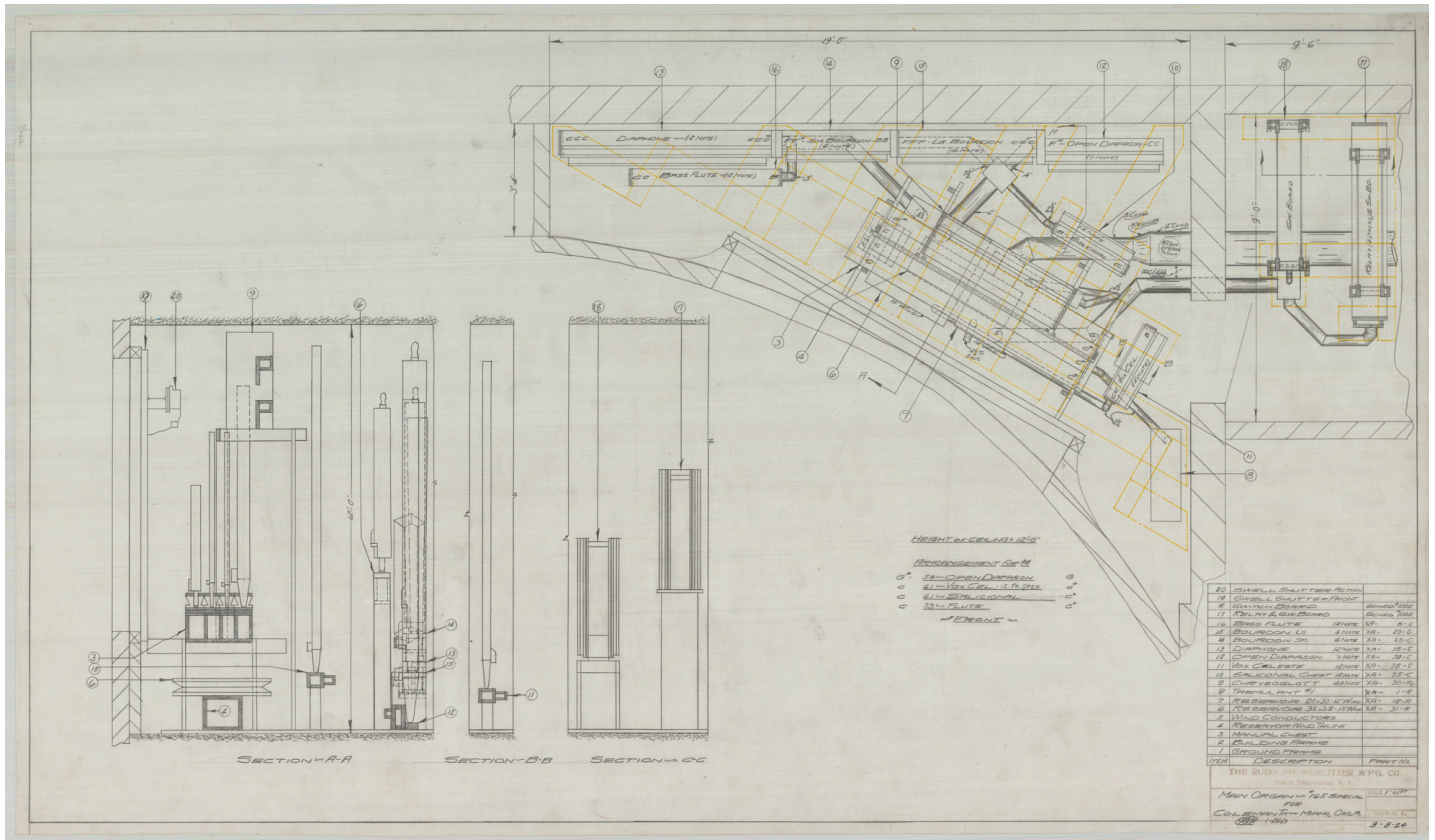
**SI Terms and Policies:**

<https://si.edu/terms>

The Smithsonian Institution welcomes personal and educational use of its collections unless otherwise noted;

If sharing the material in personal and educational contexts, please cite the National Museum of American History as source of the content and the project title as provided at the top of the document. Include the accession number or collection name; when possible, link to the National Museum of American History website. - If you wish to use this material in a for-profit publication, exhibition, or online project, please contact National Museum of American History.

**Page Intentionally Left Blank**



**File Name:** AC0469-0000070.tif

**Copyright:**  
Unknown-Restrictions Possible