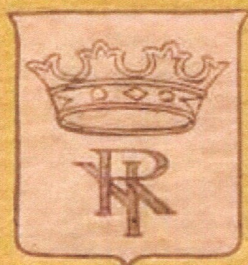


THE ORGAN
OF THE
CONVENTION HALL
ROYAL YORK HOTEL
TORONTO
1929





THE ORGAN CONSOLE

Compliments of the Builders
CASAVANT FRERES LTD.
ST-HYACINTHE, P.Q.
CANADA

Specifications

COMPASS OF MANUALS C C to C—61 Keys

COMPASS OF PEDALS C C C to G—32 Keys

GREAT ORGAN

1 Double Open Diapason...	16	68 pipes
2 Contra Clarabella.....	16	68 "
3 Open Diapason No. 1....	8	68 "
4 Open Diapason No. 2....	8	68 "
5 Open Diapason No. 3....	8	68 "
6 Hohl Flöte.....	8	68 "
7 Rohr Flöte.....	8	68 "
8 Dolce.....	8	68 "
9 Quint.....	5 1/8	68 "
10 Octave.....	4	68 "
11 Principal.....	4	68 "
12 Flute Harmonique.....	4	68 "
13 Flute d'Amour.....	4	68 "
14 Twelfth.....	2 2/3	68 "
15 Fifteenth.....	2	61 "
16 Mixture.....	3 rks.	204 "
17 Harmonics.....	5 rks.	340 "
18 Contra Tromba.....	16	68 "
19 Tromba.....	8	68 "
20 Octave Tromba.....	8	68 "
Harp (from Orchestral)		
Chimes (from Orchestral)		

SWELL ORGAN

21 Contra Geigen.....	16	68 pipes
22 Bourdon.....	16	68 "
23 Open Diapason.....	8	68 "
24 Geigen.....	8	68 "
25 Clarabella.....	8	68 "
26 Stopped Diapason.....	8	68 "
27 Viola de Gamba.....	8	68 "
28 Salicional.....	8	68 "
29 Voix Céleste.....	8	68 "
30 Octave.....	4	68 "
31 Flauto Traverso.....	4	68 "
32 Super Octave.....	2	61 "
33 Mixture.....	4 rks.	272 "
34 Cornet.....	5 rks.	340 "
35 Double Trumpet.....	16	68 "
36 Trumpet.....	8	68 "
37 Clarion.....	4	68 "
38 Oboe.....	8	68 "
39 Vox Humana.....	8	68 "
Harp (from Orchestral)		
Chimes (from Orchestral)		
Tremulant		

CHOIR ORGAN

40 Contra Dulciana.....	16	68 pipes
41 Open Diapason.....	8	68 "
42 Melodia.....	8	68 "
43 Spitz Flöte.....	8	68 "
44 Flute Céleste.....	8	68 "
45 Dulciana.....	8	68 "
46 Unda Maris.....	8	68 "
47 Dulcet.....	4	68 "

CHOIR ORGAN—Continued

48 Lieblich Flöte.....	4	68 pipes
49 Nazard.....	2 2/3	68 "
50 Harmonic Piccolo.....	2	61 "
51 Tierce.....	1-3/5	61 "
52 Dulciane Mixture.....	4 rks.	272 "
53 Contra Fagotto.....	16	68 "
54 Clarinet.....	8	68 "
55 Trumpet.....	8	68 "
56 Clarion.....	4	68 "
Harp (from Orchestral)		
Chimes (from Orchestral)		
Tremulant		

ORCHESTRAL ORGAN

57 Contra Gamba.....	16	68 pipes
58 Gross Flöte.....	8	68 "
59 Gross Gamba.....	8	68 "
60 Gamba Céleste.....	8	68 "
61 Viole d'Orchestre.....	8	68 "
62 Viole Céleste.....	8	68 "
63 Quintadena.....	8	68 "
64 Octave Viol.....	4	68 "
65 Concert Flute.....	4	68 "
66 Cornet de Violes.....	3 rks.	204 "
67 Bassoon.....	16	68 "
68 Cor Anglais.....	8	68 "
69 French Horn.....	8	68 "
70 Orchestral Oboe.....	8	68 "
71 Harp.....		61 bars
Harp Sub.....		49 notes
72 Xylophone.....		37 bars
73 Chimes.....		25 tubes
74 Castanets.....		37 notes
Tremulant		

BOMBARDE ORGAN

75 Trombone.....	16	68 pipes
76 Stentorphone.....	8	68 "
77 Trompette Harmonique..	8	68 "
78 Tuba Sonora.....	8	68 "
79 Quint Horn.....	5 1/8	68 "
80 Octave Tuba.....	4	68 "
81 Mixture.....	7 rks.	476 "
82 Tuba Mirabilis (unen-		
closed).....	8	68 "

PEDAL ORGAN

83 Double Open Diapason		
(7 acoustic).....	32	12 pipes
84 Open Diapason No. 1... 16		32 "
85 Open Diapason No. 2		
(from No. 1).....	16	32 notes
86 Open Diapason No. 3		
(from No. 2).....	16	32 "
87 Violone.....	16	32 pipes
88 Gamba (from No. 57)... 16		32 notes
89 Bourdon.....	16	32 pipes
90 Dulciana (from No. 40). 16		32 notes

PEDAL ORGAN—Continued

91 Gedeckt (from No. 22)..	16	32 notes
92 Quint.....	10 $\frac{3}{4}$	32 pipes
93 Octave (20 from No. 84)	8	12 "
94 Cello (20 from No. 87)..	8	12 "
95 Stopped Flute (20 from No. 89).....	8	12 "
96 Octave Quint (20 from No. 92).....	5 $\frac{1}{3}$	12 "
97 Superoctave (20 from No. 93).....	4	12 "
98 Mixture.....	4 rks.	128 "
99 Contra Bombarde.....	32	32 "
100 Bombarde (20 from No. 99).....	16	12 "
101 Trombone (from No. 75)	16	32 notes
102 Bassoon (from No. 67)..	16	32 "
103 Tromba (20 from No. 100).....	8	12 pipes
104 Clarion (20 from No. 103).....	4	12 "
105 Bass Drum		
106 Snare Drum		
107 Tympany		
108 Tympany Roll		
Chimes (from Orchestral)		

COUPLERS

109 Great to Pedal
110 Swell to Pedal
111 Choir to Pedal
112 Orchestral to Pedal
113 Bombarde to Pedal
114 Swell to Pedal Super
115 Bombarde to Pedal Super
116 Swell to Great Unison
117 Swell to Great Sub
118 Swell to Great Super
119 Choir to Great Unison
120 Choir to Great Sub
121 Choir to Great Super
122 Orchestral to Great Unison
123 Orchestral to Great Sub
124 Orchestral to Great Super
125 Bombarde to Great Unison
126 Bombarde to Great Super
127 Swell to Choir Unison
128 Swell to Choir Sub
129 Swell to Choir Super
130 Orchestral to Choir Unison
131 Orchestral to Choir Sub
132 Orchestral to Choir Super
133 Bombarde to Choir Unison
134 Bombarde to Choir Super

COUPLERS—Continued

135 Great to Choir Unison
136 Great to Choir Super
137 Orchestral to Swell Unison
138 Orchestral to Swell Sub
139 Orchestral to Swell Super
140 Bombarde to Swell Unison
141 Bombarde to Swell Super
142 Bombarde Super
143 Orchestral Sub
144 Orchestral Super
145 Swell Sub
146 Swell Super
147 Great Super
148 Choir Sub
149 Choir Super
150 All Swells to Swell Pedal
151 Combination Coupler Great and Pedal

ADJUSTABLE COMBINATION PISTONS

1, 2, 3, 4, 5, 6, 7, 8, to Great
1, 2, 3, 4, 5, 6, 7, 8, to Swell
1, 2, 3, 4, 5, 6, 7, 8, to Choir
1, 2, 3, 4, 5, 6, 7, 8, to Orchestral
1, 2, 3, 4, to Bombarde
1, 2, 3, 4, 5, 6, 7, 8, to Pedal
1, 2, 3, 4, to couplers
1, 2, 3, 4, 5, 6, 7, 8, to Entire (foot)
General Release
Adjuster

REVERSIBLE PISTONS

Bombarde to Pedal
Orchestral to Pedal
Swell to Pedal
Great to Pedal (duplicated by foot piston)
Choir to Pedal
Swell to Great
Choir to Great
Orchestral to Great
Bombarde to Great
Swell to Choir
Full Organ (foot)

BALANCED PEDALS

Swell Pedal to Swell
Swell Pedal to Choir
Swell Pedal to Orchestral
Swell Pedal to Bombarde
Crescendo on all stops and couplers

INDICATORS

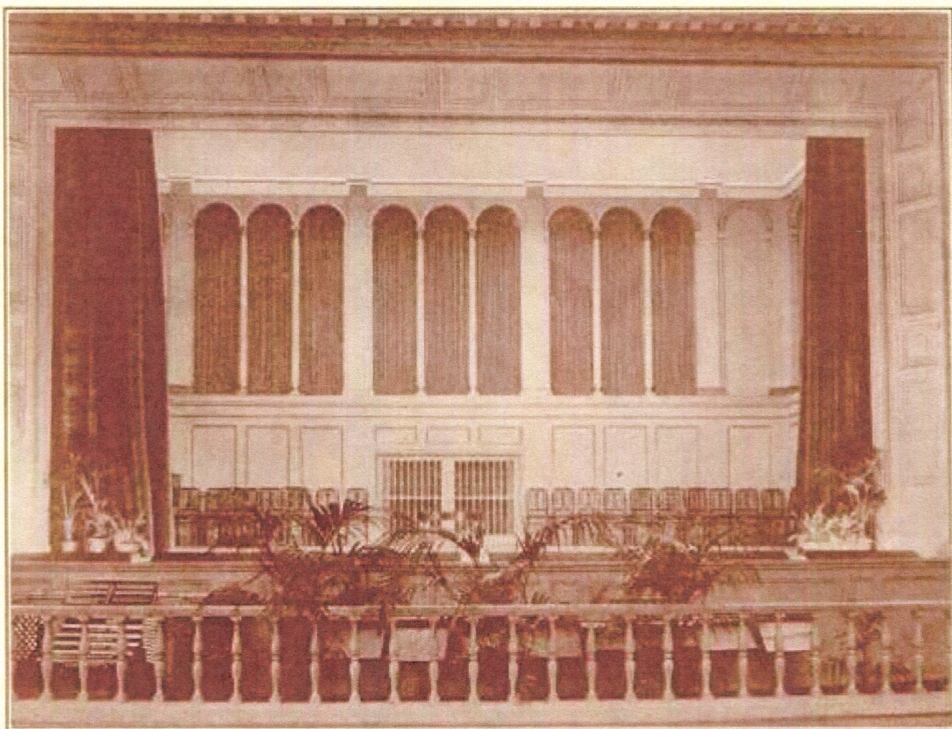
Wind—Crescendo—Voltmeter—Full Organ

This organ is the only instrument in the Dominion of Canada equipped with five key-boards. It consists of 108 stops of a total number of 7,304 speaking pipes. All the chorus reeds of the Great and Swell divisions are on heavy wind and the stops of the Bombarde division on extra heavy wind pressure.

The entire instrument is located in a chamber at the back of the stage, the tone finding egress into the auditorium through specially constructed grills.

The console is located in the pit of the Orchestra; the exterior woodwork being of quartered oak and the interior fitting around the key-boards of mahogany.

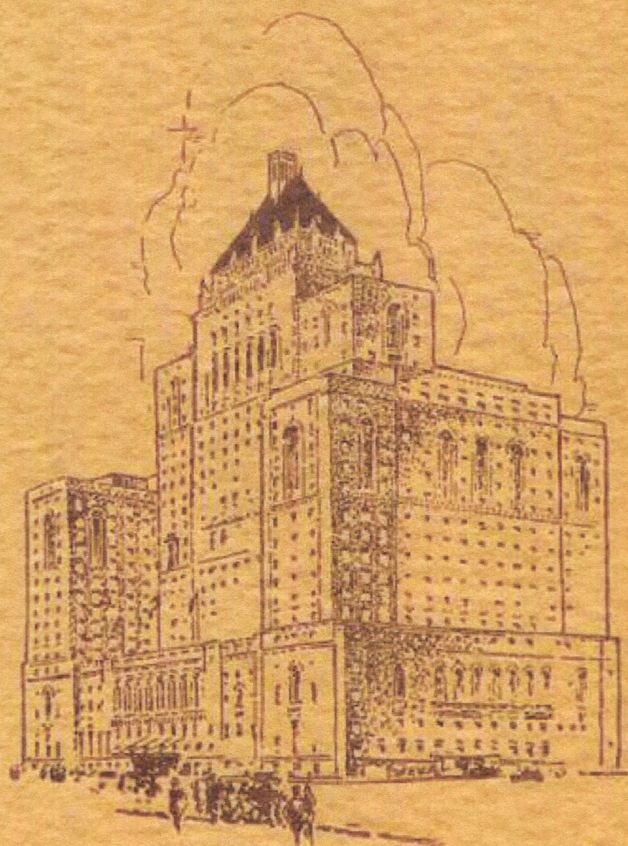
An electric blower run by a 15 H.P. motor is supplying the wind necessary for the various pressures.



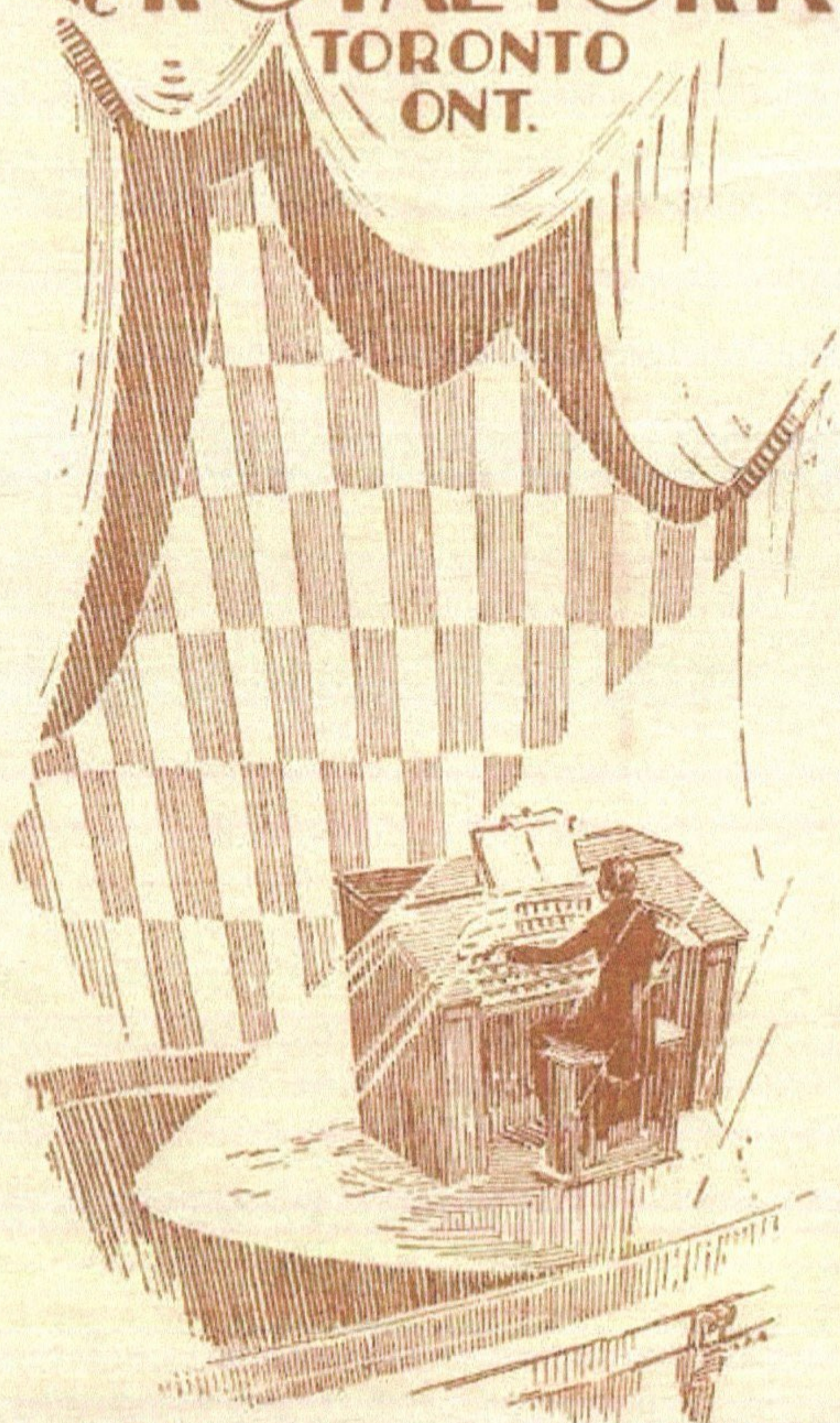
ORGAN SCREEN

The firm of Casavant Bros. Ltd. established in 1879 has built over 1,300 pipe organs installed in Canada and United-States. A few organs have also been exported in South America, Europe, Asia and Africa.

It is an interesting fact that on the fiftieth anniversary of our Firm we were commissioned to build this outstanding instrument.



The **GREAT ORGAN**
AT
The **ROYAL YORK**
TORONTO
ONT.



A CANADIAN PACIFIC HOTEL

OPENS JUNE 15th, 1929

On the floor of the Hall, or on the stage that graces one end, reposes an artistic console. In front of it, posed calmly, sits a world-famous maestro, his genius-endowed fingers resting lightly on the gleaming stops. A solemn hush descends upon the vast assembly. There is not a move. One scarcely breathes. And then...from you know not where, there comes a faint whisper of music across the still air, the first scarce-heard perfect note of a divine melody. It swells, it swells, rising, falling, now filling the room with glorious thunder, now muted to a thread of fairy sound...but all the while playing with unbelievable magic upon the heart-strings...

TRACE the wires that lead from the console, and you will find they lead to a chamber behind the stage, and that within this chamber they connect with a mammoth organ, the largest and finest in Canada and one of the finest in the world. Grilles in the chamber-walls pour the music into the auditorium.

At St. Hyacinthe, Quebec, are the workshops of Casavant Frères, the noted builders of organs. Here the great organ of the Royal York is now being built. When the last perfecting touch is added and the organ is boxed for shipment, it will weigh over fifty tons, and its multitude of parts will fill four freight cars of the largest type in use today.

This is Casavant Frères' crowning achievement, the last word in organs. The only organ in Canada equipped with five manuals, it consists of six organ-units: Great, Swell, Choir, Orchestral, Bombarde and Pedal. A list of its parts reads like a catalogue of the most complete of organs, which in truth it is. The Great Organ contains 20 stops and 1761 pipes; the Swell Organ contains 19 stops and 1761 pipes; the Choir Organ contains 17 stops and 1346 pipes; the Orchestral Organ contains 18 stops, 1088 pipes, 61 harp bars, 25 tubular chimes, 37 xylophone bars and castanets; the Bombarde Organ contains 8 stops and 952 pipes; and the Pedal Organ contains 26 stops, 396 pipes, drums, tympani, etc.

The Tonal Lay-out of the stops is arranged thus: 17 Diapason Stops, 18 Flute Stops, 12 String Stops, 14 Mixture and Mutation Stops (41 ranks), 23 Reed Stops, 8 Percussion Stops, 16 Extended Borrowed Stops, 3 Tremulants.

An electric blower, operated by a motor of 20 H.P., will furnish the wind at the various required pressures for all parts of the instrument, and the same motor will also drive a generator that will supply low voltage current for the working of the mechanism of the organ. The ingenuity connected with the construction of this motor is apparent when it is learned that the Chorus Reeds of the Great and Swell organ-units operate on heavy wind-pressure, and the stops of the Bombarde unit on extra-heavy wind-pressure.

Over 300 miles of insulated copper wire will be used on the windings of approximately 150 electro-magnets employed in the organ-mechanism, and for the cables connecting these magnets with the console.

A unique feature of the console is its portability. A special lifting arrangement makes it a comparatively easy matter to place the console on the floor of the Convention Hall or on the Stage.

TURN your calendar forward to the month of June, 1929, and imagine that the Royal York at Toronto, the largest and most palatial hotel in the British Empire, has just a few days ago opened its doors to the public. Imagine that a great and dignified convention is holding its important meetings and banquets on the spacious Convention Floor, which is one of the features of this titan-like palace. Imagine that you are seated with the delegates and their families in the comfortable seats of the huge Convention Hall . . .

TURN your calendar forward to the month of June, 1929, and imagine that the Royal York at Toronto, the largest and most palatial hotel in the British Empire, has just a few days ago opened its doors to the public. Imagine that a great and dignified convention is holding its important meetings and banquets on the spacious Convention Floor, which is one of the features of this titan-like palace. Imagine that you are seated with the delegates and their families in the comfortable seats of the huge Convention Hall . . .

