

# **Dedicatory Recital**

## **New Central Lutheran Organ**

**Chandler Goldthwaite**

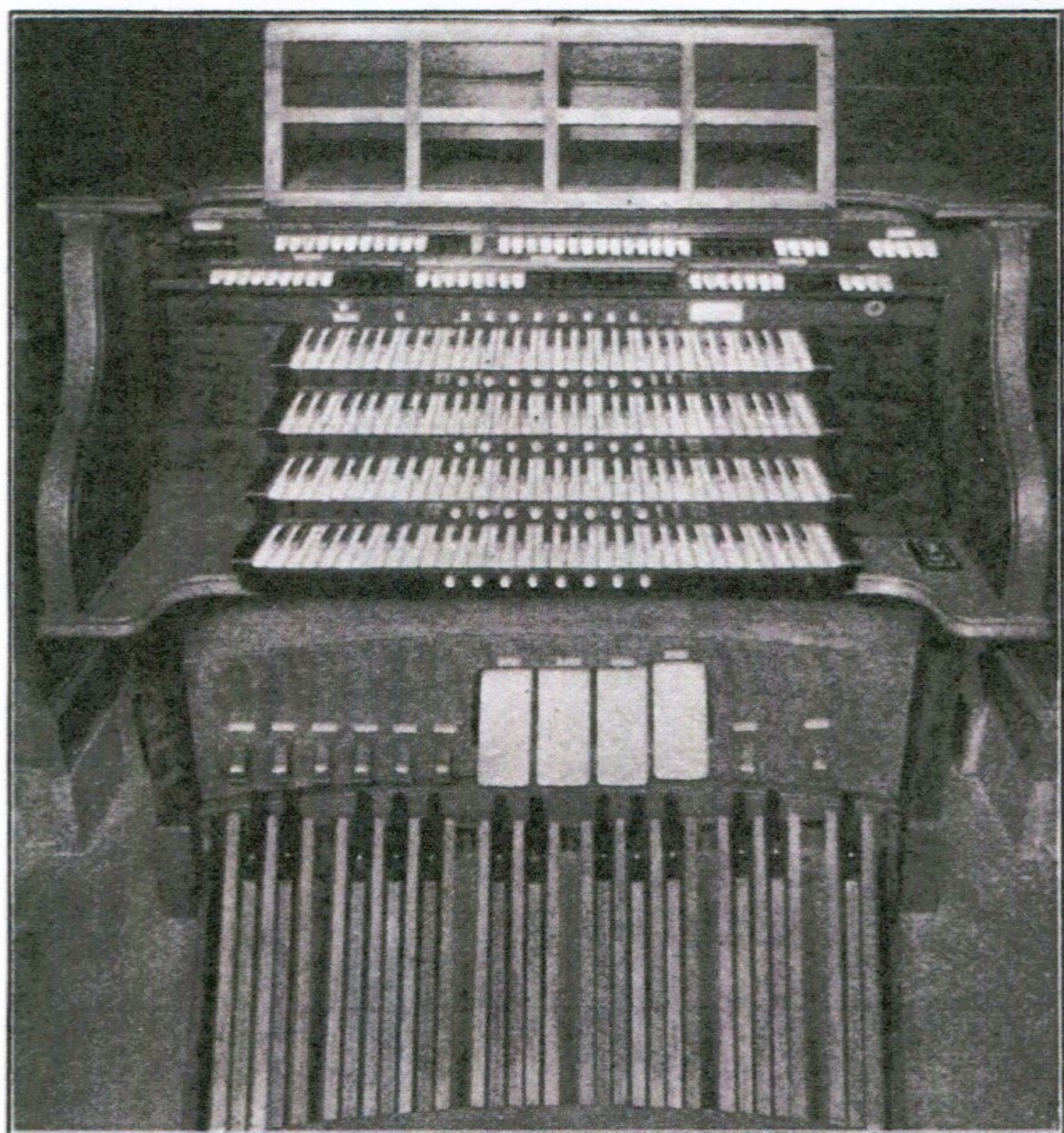


**SUNDAY, MARCH 4, 1928**

**at**

**Three Thirty o'clock**





THIS picture of the four Manual Console is taken from above. The console is immediately back of the altar, the organist facing the choir. The organ pipes, of fine large scale and dimension, are in two chambers. The four organ screens, with exposed pipes will locate the organ chambers.



# Program

- I. Toccata and Fugue in D minor *J. S. Bach*
- II. Pastorale - - - - *Cesar Franck*
- III. Scherzetto - - - - *Louis Vierne*
- Berceuse - - - - *Louis Vierne*
- Ave Marie Stella - - *Marcel Dupre*
- Pantomime - - - - *H. B. Jepson*
- Consolation - *J. Victor Bergquist*
- From Organ Sonata No. 2
- Finale - - - - *J. Victor Bergquist*
- From Organ Sonata No. 2
- IV. Caprice - - - - *C. Goldthwaite*
- Dreams - - - - *Richard Wagner*
- Chimes - - - - *C. Goldthwaite*
- Staccato Etude - - - *C. Goldthwaite*
- V. Toccata - - - - *Henri Mulet*



# Description of Central Lutheran Organ



THIS ORGAN was built by the Austin Organ Company of Hartford, Connecticut and was installed and finished by Harry Oliver Iverson, organ builder of Minneapolis. It contains 57 stops and 33 couplers representing 2,500 pipes, and 46 pistons controlling any combination of stops the organist desires. In addition to this there is a set of chimes and a celesta or harp.

With the exception of the Great and Pedal Organ Diapasons the organ is all enclosed in four "expression chambers"; one containing the swell organ, another the solo organ, a third the choir and enclosed section of the great, and the fourth containing the string organ. These chambers are fitted with "swell" shades which are controlled electrically from pedals in the console.

The console of four manuals and pedal keyboard controls all parts of the organ electrically and contains no wind. Its only connection to



the organ is the electric cable containing about one thousand wires operating a like number of electro magnets by means of tiny silver contacts under the keys. The key touch is as light playing full organ as when the softest stops are played. Wind is supplied by a 15 H.P. blower operated by a remote control switch from the console.

Tonally the organ consists first of the traditional diapason foundation stops, this kind of tone being typical of the organ and not found elsewhere. Then there are flutes of various strengths and kinds, strings and reeds. The latter includes special solo and orchestral stops such as clarinet, oboe, English horn, trumpet, tuba and vox humana. The string organ is made up of small scaled pipes representing the string tone of the orchestra. A church and concert instrument such as this, is fundamentally an organ. While it, nevertheless, contains stops which are representative of nearly all the instruments of the Symphony Orchestra, yet it is by no means supposed to imitate an orchestra. These features are used to augment the so called organ tone, and only give it more variety and contrast.



# Specifications of Central Lutheran Organ

## GREAT ORGAN (Enclosed)

16'	Diapason (unenclosed)	-	-	61	Pipes
8'	Diapason	"	-	61	"
8'	Gross Flute	-	-	61	"
8'	Melodia	-	-	61	"
8'	Dulciana	-	-	61	"
8'	Unda Maris	-	-	61	"
4'	Principal	-	-	61	"
8'	Trumpet	-	-	61	"

## SWELL ORGAN (Enclosed)

8'	Diapason Phonon	-	-	73	Pipes
8'	Dopple Flute	-	-	73	"
8'	Salicional	-	-	73	"
8'	Celeste	-	-	61	"
8'	Vox Seraphique	-	-	73	"
8'	Quintedena	-	-	73	"
4'	Flute Transverso	-	-	73	"
4'	Violina	-	-	73	"
16'	Contra Fagotto	-	-	73	"
8'	Horn	-	-	73	"
8'	Vox Humana (special Chest)			73	"

Tremolo

## CHOIR AND ORCHESTRAL ORGAN (Enclosed with Great)

8'	Major Flute (fr. Solo)	-	-	73	Notes
8'	Gross Flute (fr. Great)	-	-	73	"
8'	Concert Flute	-	-	73	Pipes
8'	Flute Celest	-	-	61	"

8'	Gamba (fr. Solo)	-	-	-	-	73	Notes
8'	Gamba Celeste (fr. Solo)	-	-	-	-	73	"
8'	Dulciana (fr. Great)	-	-	-	-	73	"
8'	Unda Maris (fr. Great)	-	-	-	-	61	"
4'	Harmonic Flute (fr. Great)	-	-	-	-	73	"
4'	Flute-Overte (fr. Solo)	-	-	-	-	73	"
8'	Oboe	-	-	-	-	73	Pipes
8'	Clarinet	-	-	-	-	73	"
8'	English Horn (fr. Solo)	-	-	-	-	73	Notes
	Tremolo						
	Chimes						
	Harpe-"Celeste"						

#### SOLO ORGAN (Enclosed)

8'	Major-Flute	-	-	-	-	73	Pipes
8'	Gamba	-	-	-	-	73	"
8'	Gamba Celeste	-	-	-	-	73	"
4'	Flute-Overte	-	-	-	-	73	"
8'	Tuba-Magna	-	-	-	-	73	"
8'	English Horn	-	-	-	-	73	"
	Tremolo						
	Harpe-"Celeste"						

#### STRING ORGAN (Enclosed in Special Box)

8'	Viol D'Orchestra	-	-	-	-	73	Pipes
8'	Celeste (sharp)	-	-	-	-	61	"
8'	Celeste (flat)	-	-	-	-	61	"
8'	Niasna (Tapered Gamba)	-	-	-	-	73	"
8'	Celeste (Tapered Gamba)	-	-	-	-	61	"

#### PEDAL ORGAN (Augmented)

32'	Resultant
16'	Open-Diapason
16'	Bourdon
16'	Violone



8' Gross Flute (great)  
 8' Dolce Flute  
 8' 'Cello (solo)  
 16' Fagotto (swell)  
 16' Tuba

## COUPLERS

Great to Great	4'	16'	Unison "off"
Solo to Great	4' 8'	16'	
Swell to Great	4' 8'	16'	
Choir to Great	4' 8'	16'	
Swell to Swell	4'	16'	Unison "off"
Solo to Swell	8'		
Solo to Solo	4'	16'	Unison "off"
Swell to Solo	8'		
Great to Solo	8'		
Choir to Choir	4'	16'	Unison "off"
Swell to Choir	4' 8'	16'	
Solo to Choir	8'		
String Organ to Solo			
Strong Organ to Swell			
String Organ to Orchestra			

## COMBINATION PISTONS (adjustable at console)

8 Pistons for Great stops and couplers  
 8 Pistons for Swell stops and couplers  
 8 Pistons for Choir stops and couplers  
 8 Pistons for Solo stops and couplers  
 14 General pistons affecting all stops and couplers

Crescendo pedal—Fortzando Pedal

Swell expression pedal

Solo expression pedal

Great and Choir expression pedal

Four manual console, detached