

## The Residence of Charles T. Ives, Esq.

Montclair, New Jersey



HE residence of Charles T. Ives, Esq., at Montclair, N. J., is a house designed in the Georgian style of architecture with a portico at the front with massive columns.

The hall and principal rooms of the first story are trimmed with white pine painted white. Entrance to the various rooms of the first story is through broad openings furnished with pilasters and fluted columns supporting arches, which have carved moldings. All the windows are trimmed to correspond. There are no doors in the first story, except from the hall and dining-room. The hall has a four-foot paneled wainscoting, and a wooden cornice. The wall space between has a brilliant wall covering. The fireplace is built with the facings and a hearth of Roman brick, and a carved mantel. The staircase is of Colonial style with a newel post formed of a cluster of balusters from which springs a rail of mahogany. The feature of the hall is the large electric-action pipe organ placed on the first landing of the stairs, and seen from the entrance hall looking through a series of columns and arches. The organ case was specially designed by the architect, and the instrument is played from the music-room.

The living-room, or library, contains a number of built-in bookcases, and a mantel that follows the general treatment of the window and door openings. Framed in, above the mantel shelf, is a reproduction of part of the western frieze of the Parthenon. The facings and the hearth are laid with Roman brick. The particular feature of interest in the music-room is the mantel.

The dining-room has a china closet built in, the treatment of which is similar to that used for the mantel in the music-room. The mantel of this room also contains a built-in china closet. Both the china mantel cabinets are lined with mirrors and contain plate glass shelves. The prevailing tones of the dining-room papers are buff and brown. The balance of the first story is occupied by the butler's pantry and kitchen.

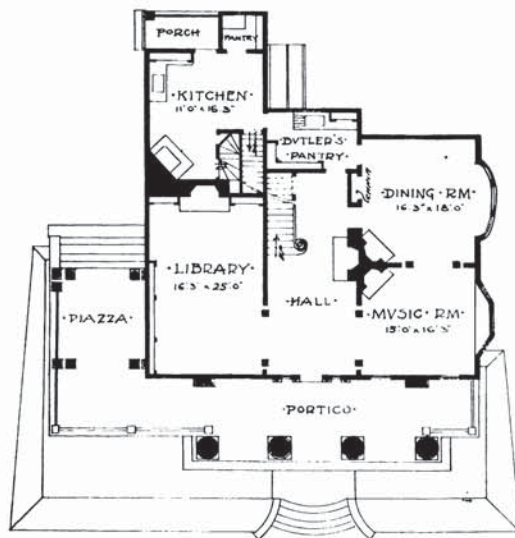
The second story contains four bedrooms, den and two bathrooms. The trim of this floor is of white pine, treated with white paint, except the den, which is in Flemish oak. The bathrooms are furnished with porcelain fixtures, the best sanitary plumbing and nickelplated pipes. There are three large bedrooms, a bathroom and ample storage space on the third floor.

Mr. A. F. Norris, architect, 150 Nassau St., New York.

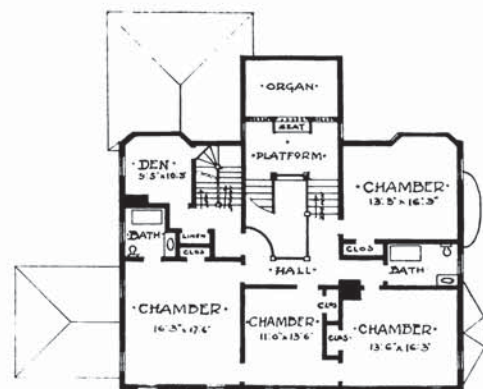


View Looking Through Hall





• FIRST FLOOR PLAN •



• SECOND FLOOR PLAN •

Residence of Charles T. Ives, Esq., Montclair, New Jersey



The Living-Room



The Hall

Residence of Charles T. Ives, Esq., Montclair, New Jersey