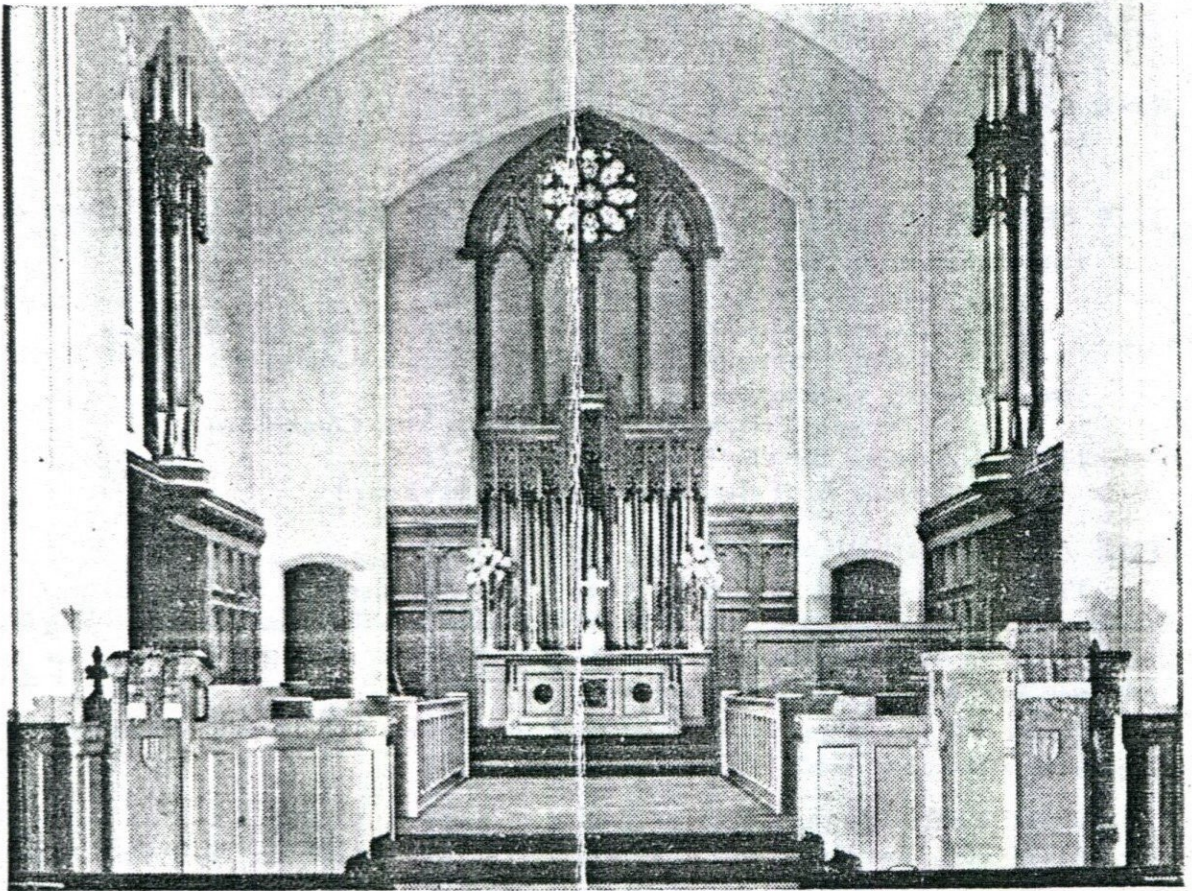


The Services of Dedication of the Chancel and Organ

March-April, 1949



SECOND PRESBYTERIAN CHURCH

Kansas City, Missouri

R. PARK JOHNSON, Minister

SAMUEL D. CROTHERS, Assistant Minister

RICHARD J. HELMS, Minister of Music

SUNDAY, MARCH 13, 1949
SECOND SUNDAY IN LENT
SERVICE OF DEDICATION

Morning Worship, 11:00 O'clock

THE SPIRIT OF WORSHIP—"Now set your heart and your soul to seek the Lord your God; arise therefore, and build ye the sanctuary of the Lord God, to bring the ark of the covenant of the Lord, and the holy vessels of God, into the house that is to be built to the name of the Lord." I Chronicles 22:19.

TOWER CHIMES

CALL TO WORSHIP (from the narthex)

SILENT PROCESSIONAL

Th: Ministers—The Choir—The Building Committee, Elders, and Trustees.

THE INVOCATION—*The People Seated*

THE PRAYER OF CONFESSION

Most holy and merciful Father, we acknowledge and confess before Thee our sinful nature prone to evil and slothful in good, and all our shortcomings and offenses. Thou alone knowest how often we have sinned, in wandering from Thy ways, in wasting Thy gifts, in forgetting Thy love. But Thou, O Lord, have mercy upon us, who are ashamed and sorry for all wherein we have displeased Thee. Teach us to hate our errors, cleanse us from our secret faults, and forgive our sins, for the sake of Thy dear Son. And O most holy and loving Father, help us, we beseech Thee, to live in Thy light and walk in Thy ways, according to the commandments of Jesus Christ our Lord. Amen.

THE ASSURANCE OF PARDON

* * * * *

THE PSALTER—Selection No. 32—*The People Standing*
(Concluding with the Gloria Patri spoken in unison)

* * * * *

THE PRESENTATION AND ACCEPTANCE OF THE CHANCEL AND ORGAN

The Builders to the Building Committee:

Mr. John C. Long, general contractor

Mr. Clarence McGuire, Jr., the American Seating Company

Mr. Walmer Brummer, the Moller Organ Company

The Building Committee to the Trustees:

Mr. J. Frank Pritchard, chairman of the Committee

The Acceptance by the Trustees:

Mr. Frank E. Tyler, president of the Board

THE ACT OF DEDICATION

The Minister shall say: Beloved in Christ, Forasmuch as God has put into our hearts to build this chancel and this instrument of music as aids to our worthy worship of Him in this holy place, it is right that we should now dedicate them to Him and set them apart to the holy use for which they are designed.

(Here all worshippers will rise and unite with the Minister in offering the Chancel and Organ to Almighty God for His Service).

MINISTER: To the glory of God our Father; to the honor of Jesus Christ, the Son of the living God, our Lord and Saviour; to the praise of the Holy Spirit, Source of light and life;

People: We dedicate this Chancel.

MINISTER: For the sacrifice of prayer and praise, and the worship of God in the beauty of holiness;

People: We dedicate this Chancel.

MINISTER: For the ministry of the Word of God, and the celebration of the Holy Sacraments;

People: We dedicate this Chancel.

MINISTER: For the uplift of the soul to God; for the sanctification of the family; for the guidance of childhood; for the comfort of the sorrowing; for the inspiration to noble action in the name of the Crucified and Risen Christ;

People: We dedicate this Chancel.

MINISTER: To the glory of God, Author of all goodness and beauty, Giver of all skill of mind and hand;

PEOPLE: We dedicate this Organ.

MINISTER: In faith in our Lord Jesus Christ, who has inspired men to offer in His praise their best in music and song;

PEOPLE: We dedicate this Organ.

MINISTER: Moved by the Holy Spirit, our Guide in the worship of God and our Helper in the understanding of truth and beauty;

PEOPLE: We dedicate this Organ.

MINISTER: To kindle the flame of devotion, that the people of God who here assemble may worship the Father in spirit and in truth; To bear up the melody of psalm and hymn and spiritual song in such wise that men may go forth from this house of God with high resolve to do His holy will; To encourage the strong and cheer the faint, to bring purity and peace into human hearts, and to lead all who hear it in the way of eternal life;

PEOPLE: We dedicate this Organ.

MINISTER: In the faith of our Lord Jesus Christ we now solemnly declare that this Chancel and this Organ, as this Church through the years has been consecrated to God's holy use, are henceforth set apart from all common and unhallowed uses and dedicated to the praise and worship of Almighty God.

DEDICATION PRAYER (To be said in unison)

Almighty God, our Heavenly Father, whom the heaven of heavens cannot contain, much less this house which we have built; yet who delightest in the assembling of Thy people in the sanctuary, and hast promised to bless them there; look with Thy loving favor upon us this day and always, and accept as Thine own this temple of worship which Thy children would consecrate to Thy service. Cause Thy face to shine upon us, and make this place to all who gather here the very house of God, and the gate of Heaven; through Jesus Christ our Lord. Amen.

HYMN OF PRAISE—No. 267—*The People Continue Standing*.....*St. Catherine*
* * * * *

THE SCRIPTURE LESSON—I Corinthians 13

ANTHEM MEDITATION—"Judge Me, O God" (Psalm Forty-three).....*Felix Mendelssohn*
Motet Choir

"Judge me, O God, and plead my cause against an ungodly nation; O deliver me from deceitful and unjust men. For Thou art the God of my strength; O why dost Thou cast me from Thee? Wherefore mourn I because the enemy sorely oppresseth me? Send out Thy light and truth, Lord; O let them lead me, and bring me unto Thy holy hill, and to Thy dwelling place. And then will I go to the altar of God, the God of my joy, to God, the God of my gladness and joy. I will praise Thee upon the harp. O my God, O my soul, why art thou cast downward, and why art thou disquieted within me? Hope in the Lord, O my soul, for I will praise Him who is the health of my countenance, and my gracious Lord and God."

CHORAL CALL TO PRAYER AND SILENT MEDITATION

THE MORNING PRAYER AND LORD'S PRAYER (Choral Choir)

THE RITUAL OF FRIENDSHIP (Everyone is requested to sign the card)

THE OFFERTORY—"Communion" (Gregorian theme).....*R. Purvis*

THE PRESENTATION AND CONSECRATION—(The People will stand and sing the Doxology)

ANTHEM MEDITATION—"The Omnipotence".....*Franz Schubert*
Mrs. H. Maurice Robinett, soprano

"Great is Jehovah, the Lord. For Heaven and Earth testify to His great pow'r! 'Tis heard in the fierce raging storm, in the torrent's loud thundering roar; Great is Jehovah, the Lord, Mighty in His pow'r! 'Tis heard in the rustling of leaves in the forest, seen in the waving of golden fields, in loveliest flowers' gaudy array. 'Tis seen in the myriad stars of heaven. Fierce it sounds in the thunder's loud roll, and flames in the lightning's brightly quivering flash. Yet clearer thy throbbing heart to thee proclaims Jehovah's pow'r. The Lord God Almighty. Look thou praying to Heav'n, and hope for grace and for mercy. Great is Jehovah, the Lord!"

HYMN No. 337—*The People Standing*.....*St. Thomas*

THE DEDICATION SERMON—"The Remaking of a Church" Ezra 9:9.

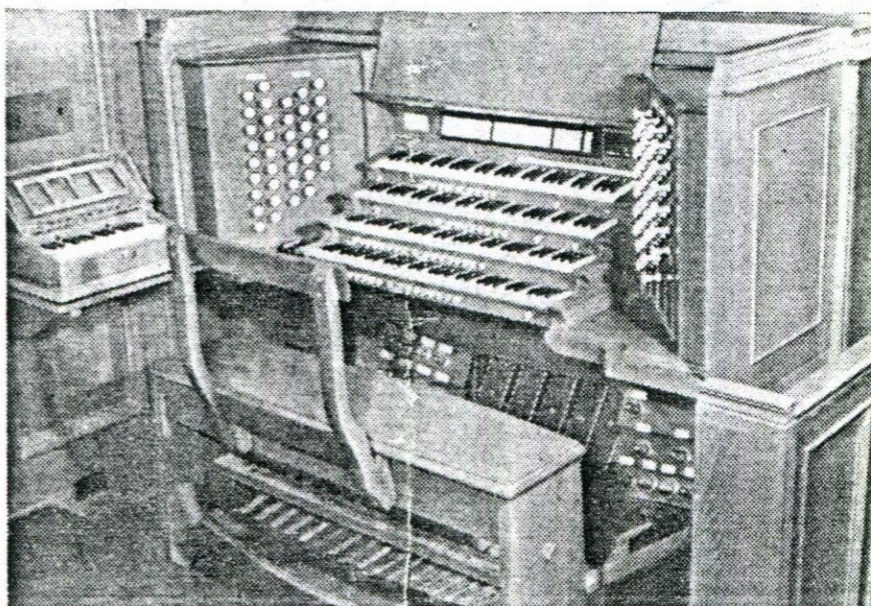
THE BENEDICTION

THE RECESSIONAL HYMN No. 333—*The People Standing*.....*Aurelia*

CHIMES AND SILENT PRAYER

THE ORGAN POSTLUDE—"Finale" (from "Fifth Symphony").....*C. M. Widor*

THE ORGAN



The organ was built and installed by the Moller Organ Company of Hagerstown, Maryland.

SPECIFICATIONS

Manuals	Compass CC to C1, 61 notes.
Pedals	Compass CCC to G, 32 notes.
Action	Moller electric pneumatic.
Console	Detached.
Registration	Speaking stops and intra-manual couplers controlled by draw knobs, inter-manual couplers by tilting tablets.
Combination Action	Capture system. Remote control setter.
Pitch	A-440

GREAT ORGAN

Violone	16' metal	61 pipes	Quinte	2 2/3' metal	61 pipes
Diapason	8' metal	61 pipes	Super Octave	2' metal	61 pipes
Hohlflote	8' wood	61 pipes	Fourniture	III rks metal	183 pipes
Gemshorn	8' metal	61 pipes	Bombarde	8' metal (Choir)	61 notes
Octave	4' metal	61 pipes	Chimes	(From Antiphonal)	
Harmonie Flute	4' metal	61 pipes	Tremulant		

SWELL ORGAN

Flute Conique	16' metal	73 pipes	Octavin	2' metal	61 pipes
Geigen Principal	8' metal	73 pipes	Plein Jeu	III rks metal	183 pipes
Rohrflote	8' metal	73 pipes	Contra Fagotto	16' metal	73 pipes
Flute Conique	8' metal	12 pipes	Trompette	8' metal	73 pipes
Viole de Gamba	8' metal	73 pipes	Fagotto	8' metal	12 pipes
Viole Celeste	8' metal	61 pipes	Vox Humana	8' metal	73 pipes
Principal	1' metal	73 pipes	Clarion	4' metal	73 pipes
Flute Triangulaire	1' wood	73 pipes	Tremulant		
			Vox Humana Tremulant		

CHOIR ORGAN

Keraulophon	8' metal	73 pipes	Nasat	2 2/3' metal	61 pipes
Concert Flute	8' wood	73 pipes	Blockflote	2' metal	61 pipes
Erzahler	8' metal	73 pipes	Tierce	1 3/5' metal	61 pipes
Erzahler Celeste	8' metal	61 pipes	Bombarde	8' metal	73 pipes
Koppelflote	4' metal	73 pipes	Clarinet	8' metal	73 pipes
Fugara	1' metal	73 pipes	Harp (Maas-Rowe)		
			Tremulant		

ANTIPHONAL ORGAN

Cor de Nuit	8' wood	73 pipes	Viola Dolce	4' metal	12 pipes
Viola Dolce	8' metal	73 pipes	Prestant	2' metal	12 pipes
Prestant	4' metal	73 pipes	Oboe	8' metal	73 pipes
Cor de Nuit	4' wood	12 pipes	Chimes	Deagon Style "D"	21 bells
			Tremulant		

PEDAL ORGAN

Contre Bass	16' wood—32 pipes	Flute Conique	8' metal (Swell)
Borrdon	16' wood—32 pipes	Rohrflote	8' metal (Swell)
Violone	16' metal (Great)	Principal	4' metal—12 pipes
Flute Conique	16' metal (Swell)	Rohrflote	4' metal (Swell)
Rohrbourdon	16' wood (Swell 20 metal) 12 pipes	Bombarde	16' metal—32 pipes
Quinte	10 2/3' metal (Great Violone)	Contra Fagotto	16' metal (Swell)
Principal	8' metal—32 pipes	Bombarde	8' metal—12 pipes
Bourdon	8' wood—12 pipes	Bombarde	4' metal—12 pipes
Violone	8' metal (Great)	Antiphonal Lieblich	16' metal

The organ is equipped with 32 couplers, 44 pistons, 15 reversibles, 4 expression pedals, plus the crescendo pedal, and 2 motors and blowers.

Dedication Organ Recital

SUNDAY EVENING, MARCH TWENTIETH

NINETEEN FORTY-NINE

EIGHT O'CLOCK



RICHARD J. HELMS, Organist



I

THE HEAVENS DECLARE THE GLORY OF GOD (Psalm Nineteen).....B. Marcel
FLUTE SOLOT. A. Arn
TRUMPET IN DIALOGUEL. N. Clerambau

II

CATHEDRAL PRELUDE AND FUGUE IN E MINOR.....J. S. Bac
CHORAL PRELUDE: O GOD, BE MERCIFUL TO ME.....J. S. Bac
GIGUE FUGUEJ. S. Bac

III

LANDSCAPE IN THE MIST (Seven Pastels from Lake of Constance).....S. Karg-Ele
CARILLONE. Delamarte
NIGHT MUSICP. Sifla

IV

CARILLONL. Viern
BERCEUSEL. Viern
RONDE FRANCAISEL. Boellman
TOCCATA (Fifth Symphony)C. M. Wido

Organ Recital

FRIDAY EVENING, APRIL FIRST
NINETEEN FORTY-NINE
EIGHT-THIRTY P.M.

Sponsored by the Motet Choir



GUEST RECITALIST—CLAIRE COCI

Faculty, Westminster Choir College, Princeton, N. J.; Head of Organ Dept., Dalcroze School
of Music, N. Y. C.; Teacher, Union Theological Seminary, N. Y. C.;
Management: Bernard R. LaBerge.



PROGRAMME

I

PRELUDE AND FUGUE IN A MINOR.....J. S. Bach
MY SOUL DOTH MAGNIFY THE LORD.....J. S. Bach
SINFONIA (Cantata No. 29).....J. S. Bach

II

SONATA ON NINETY-FOURTH PSALM.....J. Reubke
GRAVE
LARGHETTO, ALLEGRO CON FUOCO
ADAGIO
ALLEGRO, ALLEGRO ASSAI

III

BERCEUSE
FILEUSE—(Suite Bretonne).....M. Dupre
CRUCIFIXION—(Passion Symphony).....M. Dupre

THE OFFERING

IV

VARIATION ON A NOEL.....M. Dupre
THEME
LARGHETTO
POCO ANIMATO
CANON A L'OCTAVE
VIF
VIVACE
CANON A LA SECONDE
ANIME
FUGATO
PRESTO

Patrons and members of the audience are cordially invited to a reception in the social
rooms downstairs immediately following the concert, honoring Miss Coci and the Kansas City
chapter of the American Guild of Organists. The Motet Choir and Choir Guild have arranged
the reception.