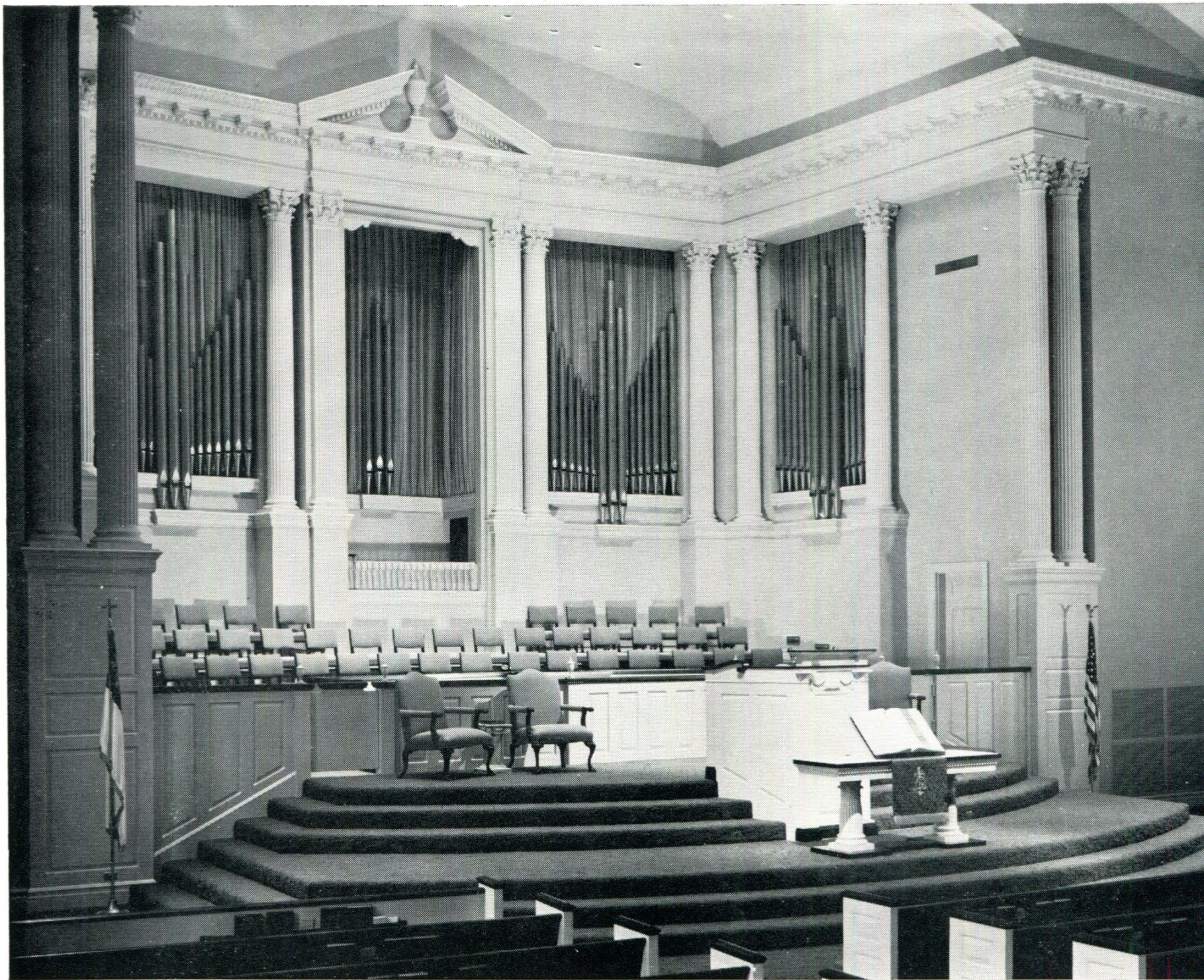




BRAINERD BAPTIST CHURCH
CHATTANOOGA, TENNESSEE

Austin Organs, Incorporated
HARTFORD, CONNECTICUT
06101

Organ high across the front of wide open chancel, with choir in front of organ provides ideal arrangement.



SPECIFICATIONS

GREAT ORGAN

Violone	16'	61 Pipes
Principal	8'	61 Pipes
Bourdon	8'	61 Pipes
Gemshorn	8'	61 Pipes
Octave	4'	61 Pipes
Nachthorn	4'	61 Pipes
Octave Quint	2 $\frac{2}{3}$ '	61 Pipes
Super Octave	2'	61 Pipes
Fourniture	IV-VI	300 Pipes
Chimes (Prepared-for)		

SWELL ORGAN

Gedeckt (Ext. of 8')	16'	12 Pipes
Rohrflöte	8'	68 Pipes
Viola	8'	68 Pipes
Voix Celeste T.C.	8'	56 Pipes
Flauto Dolce	8'	68 Pipes
Dolce Celeste T.C.	8'	56 Pipes
Principal	4'	68 Pipes
Waldflöte	4'	68 Pipes
Blockflöte	2'	61 Pipes
Plein Jeu (15-19-22-26) IV Rks.		244 Pipes
Fagotto	16'	68 Pipes
Trompette	8'	68 Pipes
Clairon	4'	68 Pipes
Tremulant		

CHOIR-POSITIV

Nason Flute	8'	68 Pipes
Erzähler	8'	68 Pipes
Erzähler Celeste T.C.	8'	56 Pipes
Prestant	4'	68 Pipes
Koppelflöte	4'	68 Pipes
Oktav	2'	61 Pipes
Quint	1 $\frac{1}{3}$ '	61 Pipes

Sifflöte	1'	61 Pipes
Sesquialtera (12-17)	II Rks.	122 Pipes
Cymbel (26-29-33)	III Rks.	183 Pipes
Krummhorn	8'	68 Pipes
Bombarde (Pedal Ext.)	8'	36 Pipes
Harp (Prepared-for)		
Tremulant		

PEDAL ORGAN

Resultant Bass		
(From Bourdon)	32'	
Principal	16'	32 Pipes
Bourdon	16'	32 Pipes
Violone (From Great)	16'	
Gedeckt (From Swell)	16'	
Octave	8'	32 Pipes
Spitzflöte	8'	32 Pipes
Rohrflöte (From Swell)	8'	
Choral Bass	4'	32 Pipes
Spitzflöte (Ext. of 8')	4'	12 Pipes
Mixture (22-26-29)	III Rks.	96 Pipes
Bombarde	16'	32 Pipes
Fagotto (From Swell)	16'	
Bombarde (Ext. of 16')	8'	12 Pipes
Krummhorn (From Ch-Pos)	4'	

ANTIPHONAL ORGAN

Flute Conique	8'	61 Pipes
Flute Celeste, T.C.	8'	49 Pipes
Principal	4'	61 Pipes
Fifteenth	2'	61 Pipes
Mixture (19-22-26)	III	183 Pipes
Trompette	8'	61 Pipes

ANTIPHONAL PEDAL

Flute Conique (Ext. of 8')	16'	12 Pipes
Flute (From Antiphonal)	8'	

THE NEW SANCTUARY BUILDING of the Brainerd Baptist Church, the second largest Southern Baptist church in Chattanooga, is an excellent example of true colonial architecture. The new sanctuary has a seating capacity of 1,450 with space for an additional 150 chairs.

The twelve huge glass sanctuary windows, which are a true colonial blend of three shades of blue, are accented inside by a double row of columns and arches which form the side aisles, giving the effect of a cloister way. Colors used throughout the building are Williamsburg greenwood and Williamsburg driftwood white. The sanctuary has as its base color a bronzed green carpet and this is accented by muted gold in the pew cushions, the four pulpit chairs, and the individual choir chairs. Furnishings for the entire building are of Williamsburg colonial design.

In addition to the main 200-year-old chandelier (which is made of imported Irish Waterford handcut crystal) and recessed ceiling lights, there are four pairs of spotlights above the choir loft and pulpit platform areas controlled by dimming devices.

The acoustical firm of Bolt, Beranek and Newman of Cambridge, Massachusetts, designed the sound system used throughout the building. The combination of wall-to-wall carpeting in the main sanctuary (with vinyl floor in the choir loft), upholstered pews (with hard backs), a hard vaulted ceiling, and the staggered paneling design of the rear wall assures optimum acoustics for both music and the spoken word.

Twenty per cent more space than average is used in the pulpit area in order to create spaciousness.

The four-level choir loft, with space for 100 movable chairs, is located directly behind the pulpit platform. The organ console, in its normal position on a lower level in front of the choir loft, cannot be seen by the congregation. A section of the platform railing is removable, however, so that the organ console can be lifted to the platform for recitals and programs.

Placement and design of the entire organ was planned as an integral part of the new building from the very beginning. Surrounding the choir loft area, seven feet above the top row of choir chairs, are large openings for the organ, making possible an undivided installation of the instrument. An artistically arranged facade of speaking pipes, placed in these openings and alternated with double colonial columns, can be illuminated when desired by the use of special lighting effects. The large, fully opened baptistry, crowned with a massive pediment, gives added height to the choir loft.

The organ chambers, which completely surround the rear of the choir loft behind the exposed pipe work, columns, and a fibre glass drape, provide ample space for the Great division (unenclosed) to the left of the baptistry; the Swell division to the left of the Great; the Pedal division behind the baptistry; and the Positiv to the right of the baptistry. The Antiphonal division, which serves to support and encourage congregational participation in the hymns and also to accompany a second choir when used in the rear of the sanctuary, is located in a chamber in the center of the spacious balcony. Placement of the organ makes it possible for the organ to blend perfectly and to speak directly into the sanctuary.

Two television camera and control rooms have been provided in the new building — one in the tower and one on the side of the sanctuary on an upper level.

built by Austin Organs, Incorporated

ORGAN ARCHITECTS AND BUILDERS

HARTFORD, CONNECTICUT