



Kumler Chapel, completed in 1918 was adapted from a Romanesque church in France, built by Thomas Hastings.

It was a gift of Anna Kumler Wight and Ella Kumler McKelvy, daughters of a Presbyterian pastor. Its stained glass windows focus on women of the Bible and of *Western College* women. The chapel, with its outstanding acoustics, seats 235.

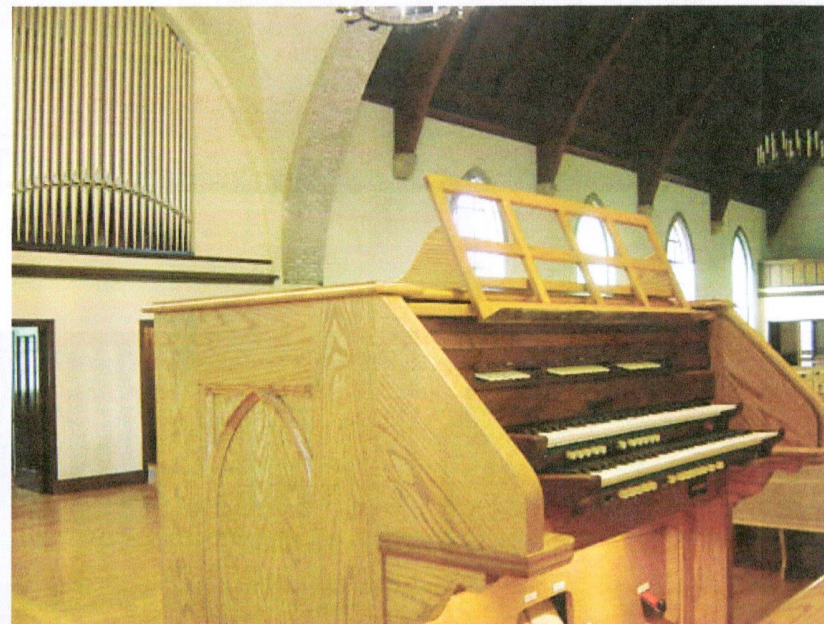
Since Western College was assumed by Miami University, this chapel no longer sees daily services, but does maintain a regular schedule of weddings, memorial services and concerts.

WWW.AUSTINORGANS.COM/2792.htm

Western College ~ Kumler Chapel

Miami University
Oxford, Ohio

Opus 2792 - 2009



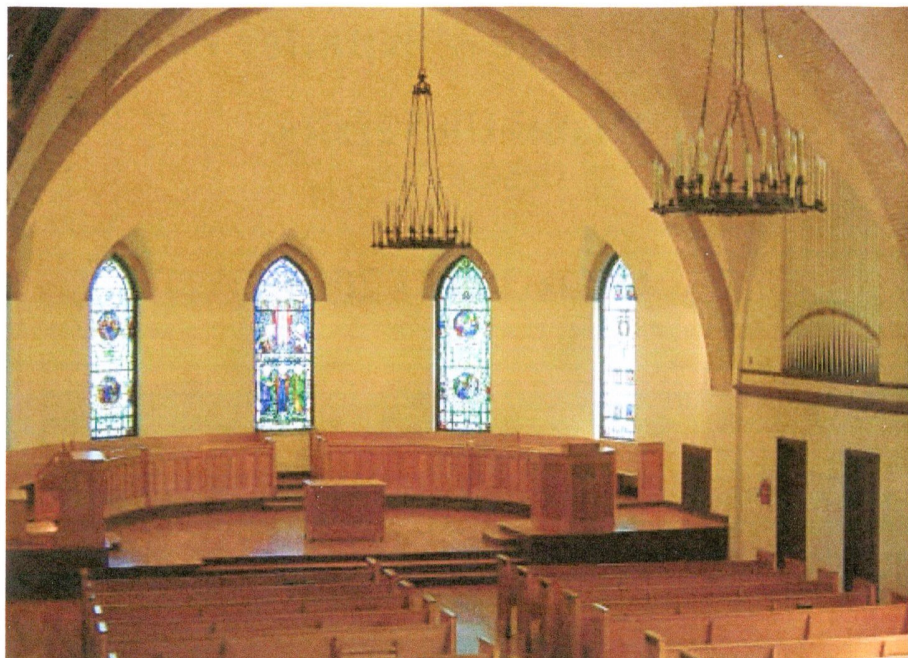
AUSTIN ORGAN ARCHITECTS & BUILDERS, INC.

ORGAN ARCHITECTS & BUILDERS

156 WOODLAND STREET HARTFORD, CONNECTICUT 06105-1284

TEL: (860) 522-8293 ~ FAX: (860) 524-9828

WWW.AUSTINORGANS.COM ~ aoi@austinorgans.com



SPECIFICATIONS

17 Ranks ~ 21 Stops

Austin Universal Airchest System - 5" wind pressure. The organ is controlled by the MultiSystem from Solid State Organ Systems (100 level combination action) The white oak console is fitted with MIDI. Some pipework from the original organ was retained and reconstructed to fit the new tonal design

GREAT

8' Open Diapason
8' Bourdon (metal)
8' Gemshorn *
8' Voix Celeste *
4' Principal
2' Fifteenth
Mixture, III *

* Enclosed with Swell

SWELL

8' Geigen Diapason
8' Rohr Flute (wood)
8' Viole de Gambe
8' Viole Celeste (tc)
4' Geigen Octave (ext)
4' Concert Flute
2 2/3' Nazard
8' Horn

Tremulant

PEDAL

32' Resultant
16' Bourdon
16' Gemshorn (gt)
8' Bourdon (ext.)
4' Octave (sw)
16' Trombone (sw ext.)

The tonal specification was created to fulfill the needs of the chapel today, namely: weddings, memorial services and teaching/concert performance.

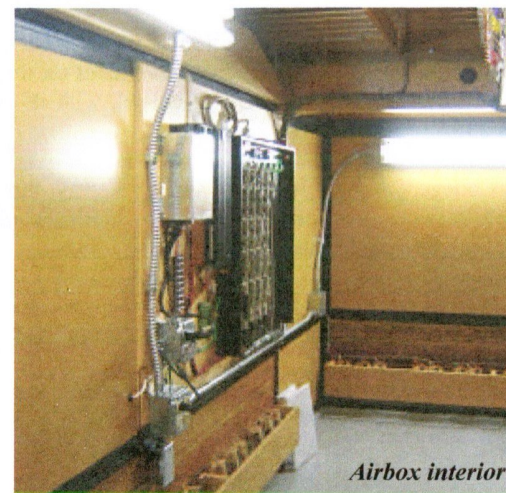
A modest instrument such as this one needs to be very flexible and still retain a measure of tonal integrity. To achieve this goal, we enclosed the Great strings and Mixture within the Swell box. In finishing, we exercised careful control in voicing. The result is an exciting organ with a dynamic range from a whisper to a rather mighty roar. More information and sound clips can be found online at: www.austinorgans.com/2792.htm



Swell Division



Great Division



Airbox interior