

MUSIC - UNIVERSITY OF TORONTO



3 1761 07202 577 8

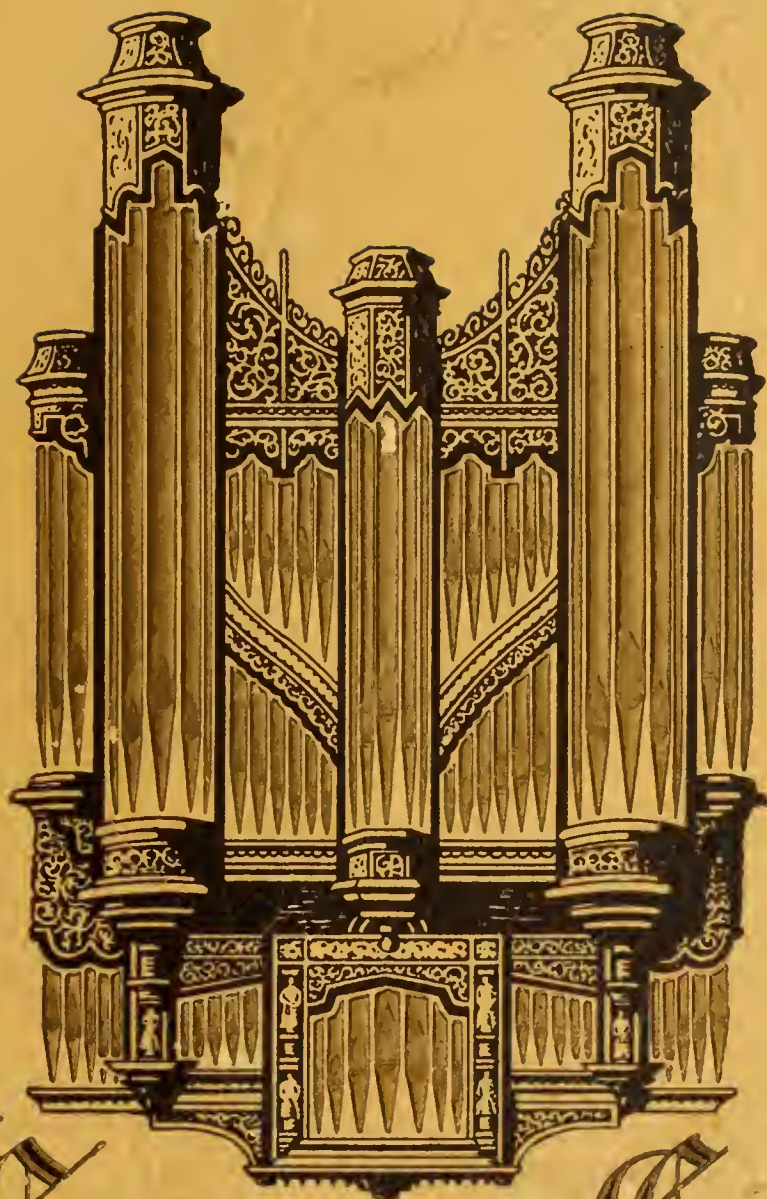
ML
563
C2
1900z
c.1

MUSI



Digitized by the Internet Archive
in 2011 with funding from
University of Toronto

<http://www.archive.org/details/cfranklinleggeor00toro>



Franklin Legge Organs

ML
563
C2
19002
c. 1
MUSI



CONSOLE OF THE FOUR-MANUAL ORGAN, 65 STOPS, STRAIGHT SPECIFICATION
FIRST BAPTIST CHURCH, BRANTFORD, ONTARIO

BUILT IN TORONTO BY
FRANKLIN LEGGE ORGAN COMPANY LIMITED

MUS 55-1



Franklin Legge
Organ Company
Limited

BUILDERS OF HIGH-GRADE
ELECTRO-PNEUMATIC
PIPE ORGANS

918-20 DUFFERIN ST
TORONTO ONTARIO







D. D. McTAVISH, SECRETARY-TREASURER



C. FRANKLIN LEGGE, PRESIDENT
Organist, Westminster-Central United Church, Toronto



WILLIAM C. LEGGE, VICE-PRESIDENT

FOREWORD

AS ORGANS differ widely in respect to their placing, architecture and size of tonal equipment, it is impossible to catalogue them in a manner similar to other musical instruments. Our aim, therefore, in preparing this booklet is merely to present to you a means of reference to our firm, a few of our achievements in the past, and our standards of manufacturing.

Our firm was founded in 1915 by our President, Mr. C. Franklin Legge, who before that time was well known as a Church and recital organist. His Toronto positions include Central Methodist Church (from 1914), Howard Park United Church (from 1924), and Westminster-Central United Church (from 1927). From the beginning the business grew and in 1919 the present location at

918-20 Dufferin Street was secured and a factory erected, which has since been increased to double the floor space, with further enlargement now projected.

POLICY

From our inauguration we have built organs of the modern electric type only, believing at the outset that the tracker and tubular-pneumatic systems would soon be discarded. Concentrating upon the one type of action has made it possible for us to produce the best at a moderate cost, and our initial policy has been amply justified to date. Through the years, numerous improvements and refinements have been made with the result that our organ action is now without question one of the simplest, most reliable and responsive in the world to-day.



WILLIAM F. LEGGE, SUPERINTENDENT

TONE

The tonal side of our instruments, however, has always been of greatest importance, for in the sound of an organ lies its chief raison d'être. We have tried to employ the best points of all the great tonal schools of the organ world, at the same time leaning more strongly toward the round diapasons and brilliant reeds of the English Cathedral organ, filled in with the meaty flutes and limpid strings of our American contemporaries. We endeavour to preserve the traditional characteristics of the various manuals, the brilliant reed chorus topping off the Full Swell, the Diapasons dominating the Great, and the more delicate accompanimental stops grouped in the Choir Organ, with an adequate foundation of Pedal stops including if possible, a thirty-two foot flue stop and sixteen foot reed and reinforced for variety with several soft sixteen and eight foot effects.

CONSTRUCTION

As the general construction of a fine organ to-day must of necessity be of the highest quality throughout, we will not go far into detail in this regard. Our policy is "The best material only." First quality lumber perfectly seasoned is the only grade used by us, whether mahogany, walnut, oak, poplar, pine, or basswood. The high quality obtains in regard to electrical equipment, leather, hardware, and all other supplies.



ANTON GOTTFRIED

The world-famous voicer, whose tone productions are a special feature of our organs.

The major points of construction, such as wind-chests, reservoirs, blowing apparatus, are always designed to give the greatest possible efficiency and accessibility. Cyphering has been practically eliminated. The casework and console are designed and finished to harmonize with the interior woodwork already in the building, and the whole organ arranged so as to favour the releasing of the tone as perfectly as possible.

PROGRESS

Our policy has always been progressive, adopting modern ideas before many of our contemporaries, and applying them to those great fundamental principles on which the King of Instruments has been developed from earliest times. We recommend and nearly always use the stopkey registers arranged in front of the player, instead of the older draw-knobs which must be arranged at the sides and out of the player's line of sight, and in the case of stops on the right side, largely out of his reach. While we furnish specifications on both "straight" and "unified" systems of tone-building, we usually recommend a judicious combination of both principles as producing the most comprehensive instrument for the amount expended. This is the policy also of leading American firms. We usually recommend the enclosure of part or all of the great Organ in an expression box, as well as the Swell and Choir, etc., and use in some cases second touch on one or more manuals, by means of which many beautiful solo and expressive effects may be brought out.





Standard Three Manual Console, stopkey type,
all combinations visibly adjustable



CHURCH OF THE MESSIAH, TORONTO
Three manuals, forty-seven speaking stops, harp and chimes,
sixty-six couplers and mechanical accessories

CASA LOMA CONCERT ORGAN



THE ORGAN



THE CASTLE

Three manuals, over one hundred stops and effects. Second touch on all manuals. Full set of orchestral percussions.



THE CONSOLE



ST. JOSEPH'S CHURCH



Mr. Franklin Legge at the console of the new three manual organ, Westmoreland United Church, Toronto



ST. JOSEPH'S ROMAN CATHOLIC CHURCH
OTTAWA, ONTARIO

Three Manual Organ, West Gallery



BELLEFAIR UNITED CHURCH, TORONTO
Three manuals, thirty-nine speaking stops—harp and chimes,
thirty-eight couplers and mechanical accessories.

A Few Representative Testimonials Concerning Franklin Legge Organs

MR. E. W. GOETHE QUANTZ, LONDON, ONTARIO

Forest, Ontario, November 26, 1928.

C. FRANKLIN LEGGE ORGAN COMPANY,
Toronto, Ontario.

Gentlemen:

The following is an excerpt from the report of Mr. E. W. Goethe Quantz, supervisor of the Music Department of the London Public Schools, concerning the organ installed in the Forest United Church by your firm.

"I find that the specifications have been very faithfully adhered to and the work has been carried out in splendid fashion. The tone quality is excellent—the blending of the various tonal qualities would be difficult to improve upon, the voicing is so splendidly done. . . . Again may I say how much pleased I was with the tonal quality of the instrument, the variety of colouring, the exceeding quick action and the general harmonization of your organ with the architecture of your church—the whole being a distinct credit to the Building and Organ Committees and the congregation."

The Organ Committee is glad to give their hearty indorsement to the findings of Mr. Quantz. The Committee and the congregation alike are delighted with the organ. We are also pleased to say that our business relationships with your firm have been most pleasant and satisfactory throughout the entire transaction.

Yours sincerely,

(Signed) WM. LYON HILES,

Secretary of the Organ Committee:

T. J. PALMER, A.R.C.O.
in the Ottawa "Citizen"

The opening recital on the new organ in St. James' United Church took place last night before an audience that well filled the auditorium of the church. The recitalist was Mr. C. Franklin Legge, organist of Westminster Central Church, Bloor Street East, Toronto, also one of the firm of the builders of the organ.

The new organ is a three-manual instrument of approximately 40 speaking stops divided as follows: choir 8, great 8, swell 13, pedal 9 and harp and chimes. The specifications feature a number of stops for attractive solo effects which were splendidly used by the recitalist last night. The voicing of the organ has been artistically carried out, and the general effect of the whole instrument is satisfying and pleasing. The acoustic properties of the auditorium are excellent for music and consequently an organ is heard to the very best advantage under such ideal conditions.

The full organ effect is ample for the church and the tones of the soft or delicate stops float out from the instrument without obstruction as is so often the case in churches when the acoustics are faulty. St. James' church offered the organ builder a great opportunity and Mr. Legge has taken advantage of this rare chance with very successful results. I was impressed with the general effect of the instrument.

DR. HERBERT SANDERS, F.R.C.O.
Organist Park Melville United Church, Montreal

Thursday, Jan. 9th, 1930.

MR. C. FRANKLIN LEGGE,
918 Dufferin Street,
Toronto, Ontario.

Dear Mr. Legge,

I can state with pleasure that the organ erected by you in the St. James United Church, Ottawa, pleases me tremendously.

The action is ingenious, up-to-date, and thoroughly reliable. The full organ is nobly resonant; the soft stops are remarkably beautiful and altogether the instrument is capable of delightful effects. Its playing gave me unusual pleasure.

Yours sincerely,

(Signed) HERBERT SANDERS,
(*Mus. Doc. F.R.C.O.*).
Tudor Hall.

HS/JB.

~~~~~

MR. A. D. JORDAN  
*Organist and Choirmaster Timothy Eaton Memorial Church, Toronto*

London, Ontario, January 6, 1930.

C. FRANKLIN LEGGE, ESQ.,  
President, Legge Organ Company,  
Toronto, Ontario.

Dear Mr. Legge:

As I was passing the Church of the Messiah in Toronto during the Christmas vacation, I dropped in to see how your organ was standing up. I was delighted to find everything in fine shape, and was surprised to learn, that your tuners had not been at the church since the early summer. The condition of this instrument is an evidence of the solid construction and careful installation of the instrument by your mechanics, of which you may justly feel proud.

The pipe work is most effective and I must mention in particular the splendid and sonorous Diapason organ from the pedal up. Features worthy of special mention and not usually found in an organ of this size and cost, are the floating Tuba organ, an impressive tonal complement, the String Choir at 16, 8, 4, 2 $\frac{3}{4}$  and 2 foot registers, a delightful effect, and I am sure that the Kohler-Lieblich Harp Celeste and Cathedral Chimes are charming all who hear them.

The mechanical details have been carefully looked after. The blower is powerful but quiet. The action is rapid and noiseless. The interior woodwork and the casework are most satisfactory in material and workmanship. Altogether it may be called an outstanding church and concert organ, and one which any organist should consider it a privilege to preside over.

It gave me the greatest pleasure to be associated with you in my capacity of consulting organist, acting for the church authorities, and I should like to bear testimony as to the splendid co-operation given me by yourself and the members of your staff.

With compliments and kind regards.

Sincerely yours,

(Signed) A. D. JORDAN.





## Testimonials — continued

### ST. JOHN'S PRESBYTERIAN CHURCH, CORNWALL

Cornwall, Ont., October 25th, 1927.

C. FRANKLIN LEGGE ORGAN COMPANY,  
Toronto.

Gentlemen:

On behalf of the Board of Managers of St. John's Church, Cornwall, I wish to express to you our satisfaction with your work in installing the new organ in our church. You have carried out your contract in a way which meets with the approval of the whole congregation. The organ has met only with commendation from all who have heard it. It has surpassed even our expectations, and we gladly pay this tribute to the good work you have done.

Yours very truly,  
(Signed) L. H. Clark  
Chairman, Board of Managers,  
St. John's Presbyterian Church.

### COLLEGE STREET BAPTIST CHURCH, TORONTO

Toronto, November 4, 1926.

MESSRS. C. FRANKLIN LEGGE ORGAN CO.,  
912 Dufferin Street, Toronto, Ontario.

Gentlemen:

The new three-manual organ built by you for College Street Church has been in use nearly a year, and I feel that I should pass on to you the appreciation of the instrument so often expressed by those who hear it.

The warmth of tone which characterizes this organ is a constant inspiration to the choir and congregation as well as myself. The various tone-colors are well contrasted yet blend perfectly. The Chimes are perhaps the best we have heard.

The mechanical side of the instrument has exceeded our expectations. Although placed in a newly constructed building where a certain amount of damp was inevitable, there has been little or no trouble with the action, which for quickness of response is all that could be desired.

Thanking you for your untiring efforts in producing for us such a fine example of the modern organ-builders art, which we trust will prove a monument to your ability and judgment, I beg to remain,

Yours faithfully,  
(Signed) H. G. WILLIAMS.  
Organist.

### ST. PAUL'S LUTHERAN CHURCH, HAMILTON

Hamilton, March 18, 1929.

FRANKLIN LEGGE ORGAN CO. LTD.,  
Toronto, Ontario.

Gentlemen:

It affords me a great deal of pleasure to convey to you in the name of the Church Council and Congregation of St. Paul's Lutheran Church their hearty appreciation of the splendid organ you installed in our Church last December. The congregation feels entirely satisfied and every one who has heard the organ is delighted with the beautiful quality of tone. It has been played upon by some of the leading organists of the City and pronounced a splendid instrument in every way. We will be pleased to recommend it to anyone you wish to refer to us.

Wishing you every success, I am,

Yours very sincerely,  
(Signed) A. RAMSPERGER,  
Secretary.

1 Connaught Ave. N.

## Specifications

As there is such a wide variety both of size and detail in organ specifications, we will not attempt to print a representative series in these pages, preferring in each instance to submit a specification which will meet the exact requirements of the purchaser. Our recommendations are based upon the size of the building, the size of space for an organ and its location, and the funds available.

Frequently it is desired to install an organ which will contain only the stops essential for accompanimental purposes, with provision for additional solo stops and special features to be added later on. This is more practical with our system of action than others, and does not add materially to the ultimate cost of the completed instrument.

Our specifications are scientifically planned in accordance with the accepted traditional ideals of tonal build-up, and preserving the departmental characteristics of the various manuals. We do not approve of the "Unit Organ" as such, but agree with the growing feeling among organists and organ builders, that some of the softer stops in an organ may be extended or duplexed in certain cases, without any sacrifice in the tonal effect, to the financial advantage of the purchaser. Our system of electric action permits any of the stops to be used "straight" or extended for unification as desired, with equal facility.

### Construction and Erection

The Franklin Legge organ is not an assembly of parts obtained elsewhere, but is planned and custom-built from the ground up in our factory. All action work is placed on the wind, tested and regulated before shipment, and the final tonal finishing is supervised personally by Mr. C. Franklin Legge. We manufacture our own electric blowers, swell engines, and actions for Harp, Chimes and other percussions. The percussions and special metal stops are made to our specifications by specialists who are recognized as leaders in their various lines. Our system of electric action is one of the simplest, most efficient, and instantaneous in operation in the world to-day. The wind-chest action contains only the valve under each pipe, and the magnet which controls it. This makes for extreme reliability, coupled with easy regulation when necessary.







KNOX CHURCH  
TORONTO  
Three manuals



Fifty speaking stops,  
forty-six couplers and  
mechanical accessories.  
Chimes









FIRST AVENUE BAPTIST CHURCH, TORONTO  
Three manuals, thirty speaking stops, thirty-eight couplers and  
mechanical accessories







COLLEGE STREET BAPTIST CHURCH,  
TORONTO

Three manuals, thirty speaking stops,  
chimes, thirty-eight couplers and  
mechanical accessories



ALL SAINTS ANGLICAN CHURCH,  
WHITBY, ONT.

Two manuals, twenty speaking stops,  
sixteen couplers and mechanical  
accessories







WINDERMERE UNITED CHURCH, TORONTO  
Two manuals, twenty-one speaking stops, sixteen couplers and  
mechanical accessories







#### SELF-PLAYER ACTION

For residence and mortuary organs, operating the organ by means of hand recorded rolls.

We are the Canadian distributors for Artistouch Organ Rolls.



#### THE "CHAPEL MODEL" ORGAN

A self-contained electric Pipe Organ for smaller Churches, Sunday Schools, Lodge Rooms, Funeral Chapels and Residences.







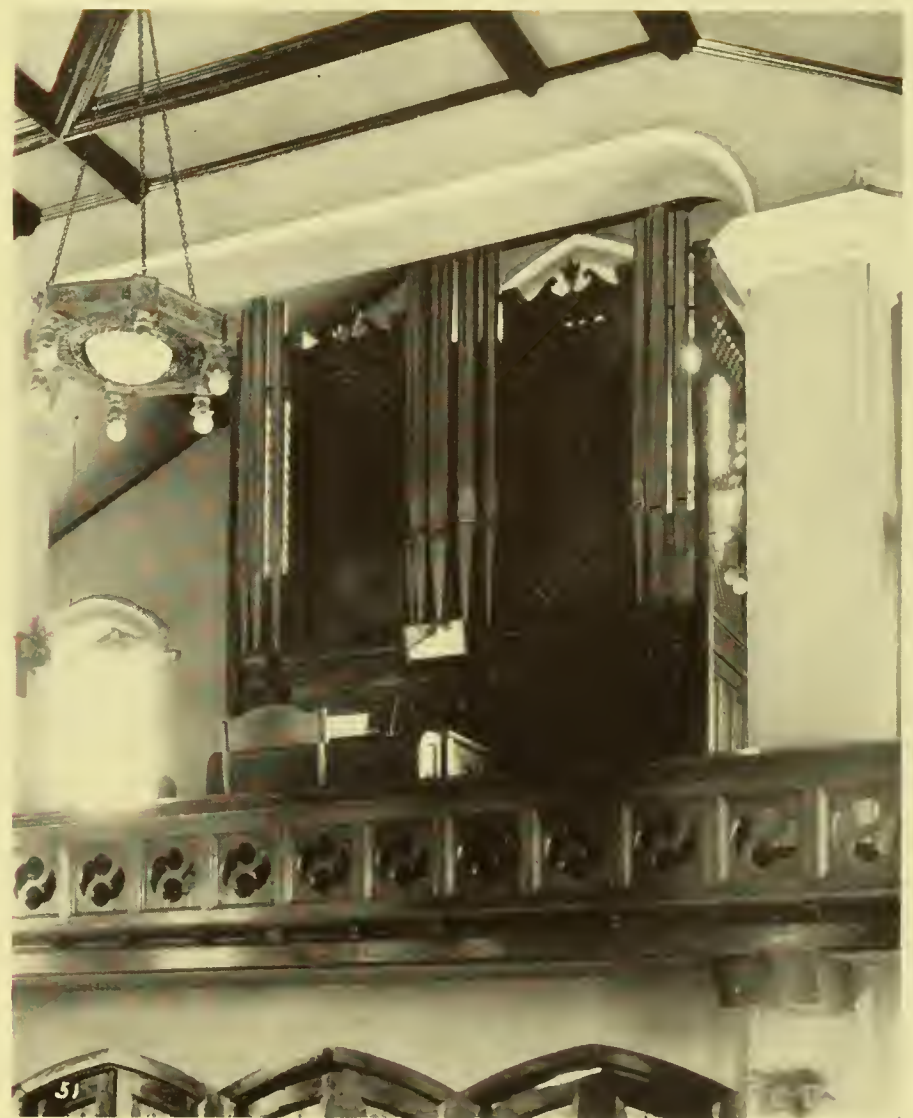
QUEEN STREET BAPTIST CHURCH, ST. CATHARINES, ONT.  
Three manuals, twenty-eight speaking stops, chimes,  
thirty-two couplers and mechanical accessories







ST. PETER'S LUTHERAN CHURCH, PRESTON, ONT.



ST. JOHN'S LUTHERAN CHURCH, PEMBROKE, ONT.



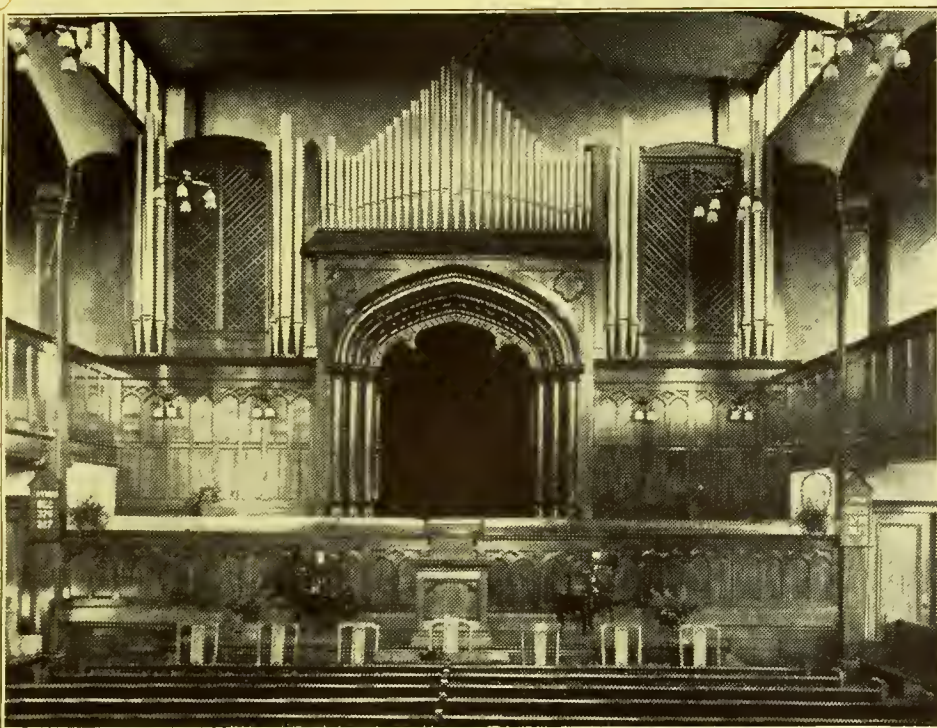




GRACE UNITED CHURCH, TORONTO  
Three manuals, thirty-five speaking stops, all enclosed,  
thirty-eight couplers and mechanical accessories







DUFFERIN BAPTIST CHURCH, TORONTO  
Two manuals, fifteen stops



VERDUN UNITED CHURCH, MONTREAL  
Three Manual Organ



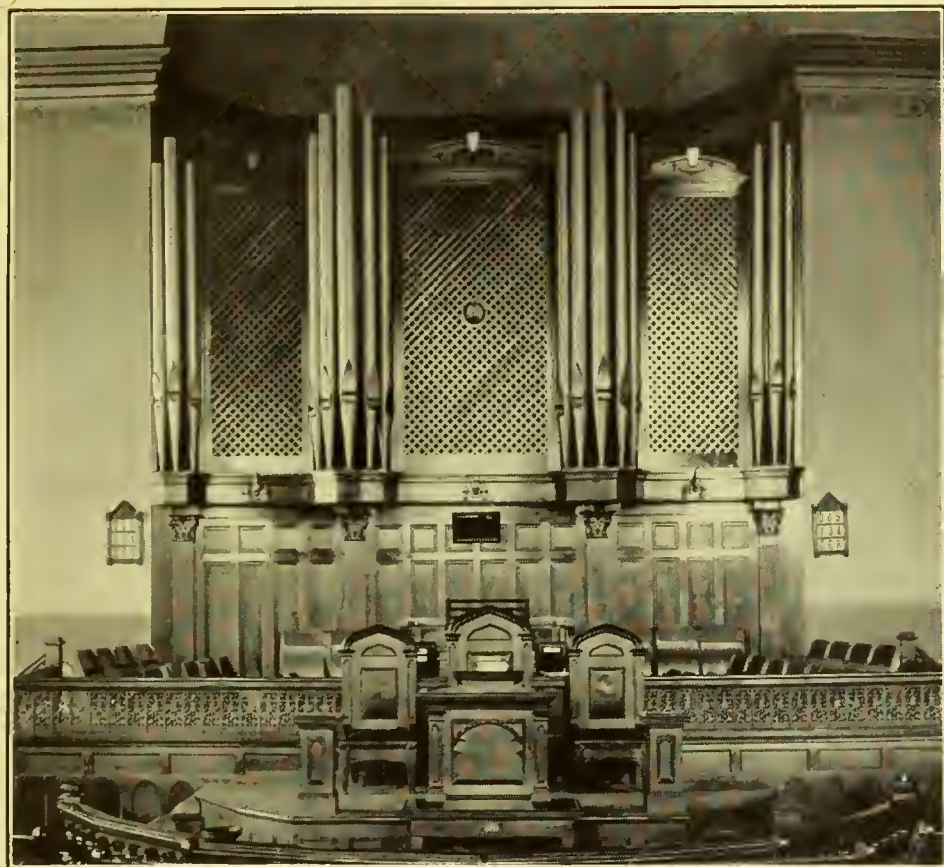




ST. JAMES UNITED CHURCH, OTTAWA  
Three manuals, forty speaking stops—harp and chimes







ZION UNITED CHURCH, HAMILTON, ONT.  
Three manuals, thirty-five stops, chimes



Residence Organ, H. T. West, Esq.  
134 Inglewood Drive, Toronto







Two-Manual Organ, First Church of Christ Scientist  
Hamilton, Canada.







Three-manual console of six octave compass A to A.  
Pedalboard AAAA to G, 35 notes.



Two-manual console, English type with ivory knobs  
at 45 degrees.



Two-Manual Console, Stopkey Type



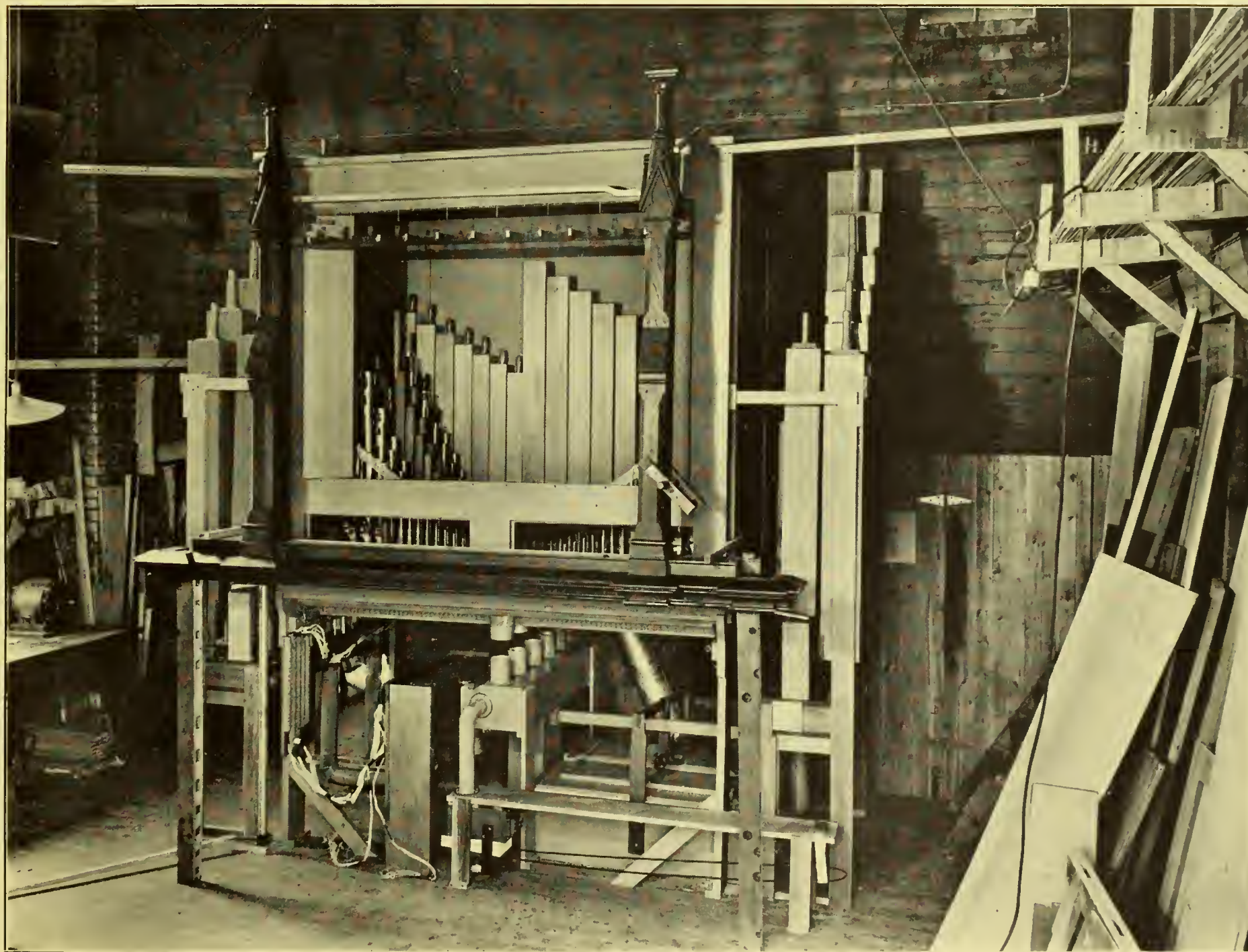




Three Manual Concert Organ for Radio Broadcasting, in the  
Rose Room of the Studio of C.K.N.C., Toronto



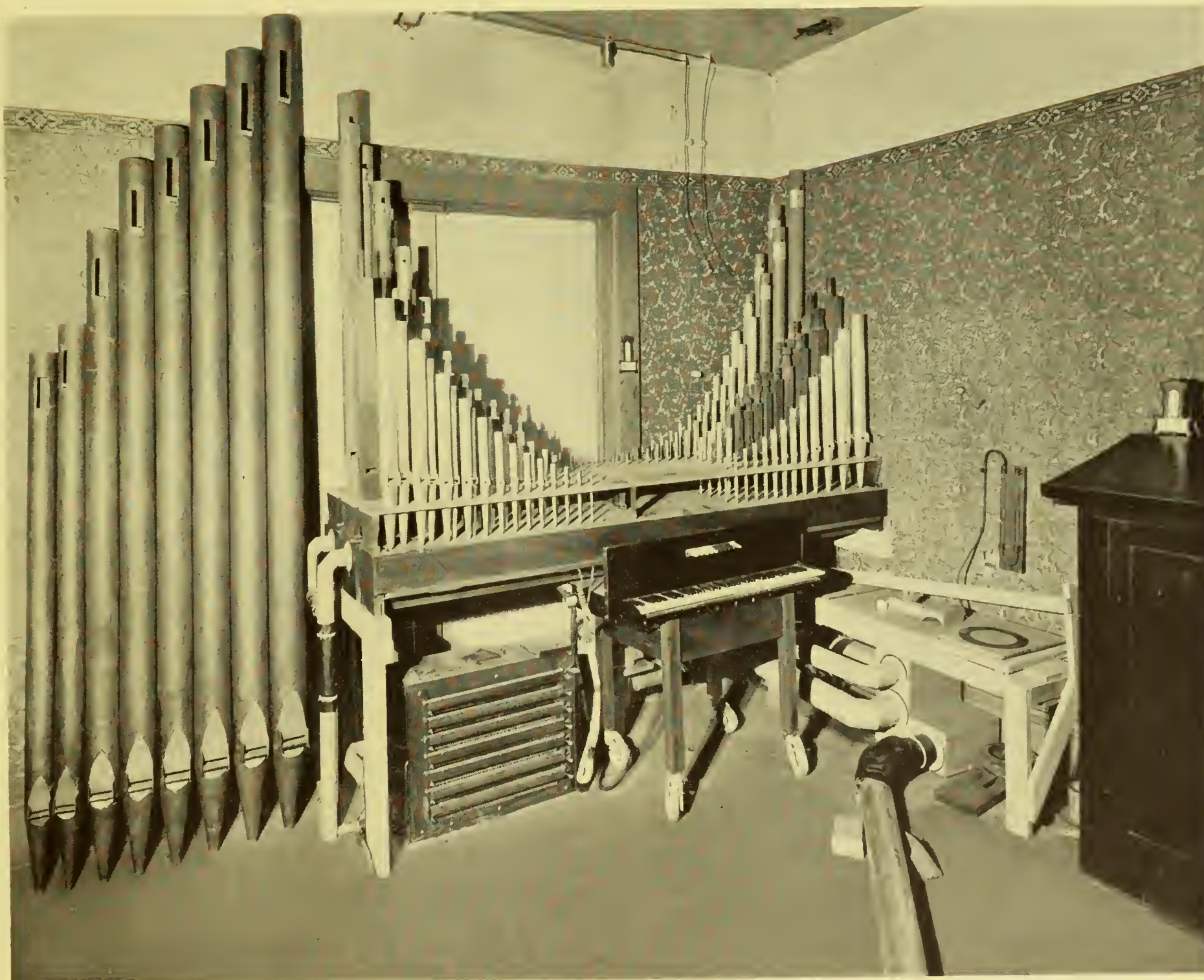




ERECTING ROOM  
Showing two manual organ in course of erection







MULTI-PRESSURE VOICING MACHINE  
With movable stopkey desk







MACHINE SHOP



PIPE DEPARTMENT



CASE DEPARTMENT



ERECTING ROOM









ACTION DEPARTMENT



WIRING DEPARTMENT



ACTION DEPARTMENT



CONSOLE DEPARTMENT















UTL AT DOWNSVIEW



D RANGE BAY SHLF POS ITEM C  
39 13 03 17 03 009 6