

THE VICTORIAN PALACE

residence of Jasper & Marian Sanfilippo
Barrington Hills, Illinois

This organ was originally designed by David Junchen; following his death in 1992, a crew including Lyn Larsen, Robert Ridgway and Curt Mangel worked diligently to complete Junchen's vision of the ultimate theatre organ. The instrument is an amalgamation of new and old pipework and mechanisms. The console is new, built by Ken Crome and detailed by Carlton Smith; the chest work is mostly Wurlitzer; swell shades are Barton; the pipework is predominately Wurlitzer, with additions of other vintage pipes, and several new ranks built by Jerome Meyer, Wicks, Ken Crome and others. Although most of the organ resides in four chambers behind the stage, a fifth section (the Ethereal) is placed high in a chamber at the rear of the music room. The organ employs electro-pneumatic unit action throughout; the larger 32' extensions and percussions are exposed at either side of the stage.

PEDAL 32 notes

32' Contra-Bombarde
32' Diaphone
32' Magnaton
32' Contra-Tibia Clausa
16' English Horn
16' Bombarde
16' Ophicleide
16' Chorus Trumpet
16' Diaphone
16' Magnaton
16' Tibia Clausa (ORCH)
16' Tibia Clausa (SOLO)
16' Diaphonic Horn
16' Bourdon
16' Oboe Horn
16' Clarinet
16' Solo Violins
16' Contra-Salicionals
8' English Horn
8' Chorus Trumpet
8' Tuba Horn
8' Chorus Tuba
8' Diaphonic Diapason
8' Minor Diapason
8' Horn Diapason
8' Tibia Clausa (ORCH)
8' Tibia Clausa (SOLO)
8' Tibia Clausa (FOUND)
8' Flute
8' Rohrflöte
8' Clarinet

PEDAL continued

8' String Ensemble
8' Salicionals
16' Piano
8' Piano
Kettle Drum
Bass Drum
Crash Cymbal
Sizzle Cymbal
Roll Cymbal
Finger Cymbal
Triangle
Accomp. to Pedal
Great to Pedal
Solo to Pedal
Ethereal to Pedal

ACCOMPANIMENT

Manual I, 61 notes

8' English Horn
8' Tuba Mirabilis
8' Solo Trumpet
8' Chorus Trumpet
8' Tuba Horn
8' Chorus Tuba
8' Trumpet
8' Diaphonic Diapason
8' Open Diapason
8' Principal
8' Minor Diapason
8' Horn Diapason
8' Tibia Clausa (ORCH)
8' Tibia Clausa (SOLO)

ACCOMPANIMENT ACCOMPANIMENT

continued

continued

8' Tibia Clausa (FOUND)
8' Flauto Mirabilis
8' Rohrflöte
8' Koppelflöte
8' Lieblichflöte
8' Quintadena
8' Concert Flute
8' Harmonic Flute
8' Nachthorn
8' Flauto Dolce
8' French Horn
8' Oboe Horn
8' Clarinet
8' Basset Horn
8' Krumet
8' Solo Saxophone
8' Saxophone
8' Major Vox Humana
8' Mezzo Vox Humana
8' Solo Vox Humana
8' Vox Humana
8' Minor Vox Humana
8' Vox Mystica
8' Solo Violins
8' Cellos
8' Violins
8' Solo Strings
8' Violes d'Orchestre
8' Salicional
8' Gemshorns
8' Erzählers
4' Octave
4' Minor Octave
4' Horn Octave
4' Piccolo (SOLO)
4' Piccolo (FOUND)
4' Rohrflöte
4' Koppelflöte
4' Lieblichflöte
4' Flute
4' Nachthorn
4' Vox Humana Ensemble
4' Minor Vox Humana
4' Vox Mystica
4' String Ensemble
4' Violins

4' Salicets
4' Gemshorns
2½' Lieblich Twelfth
2' Piccolo
2' Nachthorn
1½' Tierce
1½' Quinte
1' Sifflöte
8' Piano
8' Solo Harp
8' Harp
4' Solo Harp
4' Harp
4' Vibraphone
4' Chrysoglott
Snare Drum
Chinese Block
Tom-Tom
Castanets
Tambourine
Sizzle Cymbal
Hi-Hat Cymbal
Sleigh Bells
Triangle
Finger Cymbal
Sand Block
Octave (coupler)
Solo to Accomp.
Ethereal to Accomp.

ACCOMPANIMENT

Second Touch

8' Tuba Maxima
8' English Horn
8' Tuba Mirabilis
8' Trumpet Ensemble
8' Tuba Ensemble
8' Diaphonic Diapason
4' Piccolo Ensemble
8' Piano
8' Solo Harp
Octave Glockenspiel
Cathedral Chimes
Third Key Traps
Traps to 2nd Touch
Great Octave Accomp.
Solo to Accomp.
Ethereal to Accomp.



GREAT *Manual II, 61 notes* GREAT *continued*

16' English Horn
 16' Tuba Mirabilis
 16' Solo Trumpet [t.c.]
 16' Chorus Trumpet
 16' Chorus Tuba [t.c.]
 16' Trumpet [t.c.]
 16' Diaphone
 16' Open Diapason
 16' Diaphonic Horn
 16' Tibia Clausa (ORCH)
 16' Tibia Clausa (SOLO)
 16' Tibia Clausa [t.c.]
 (FOUNDATION)
 16' Rohr Bourdon [t.c.]
 16' Lieblich Bourdon [t.c.]
 16' Quintadena [t.c.]
 16' Flauto Dolce [t.c.]
 16' Oboe Horn
 16' Clarinet
 16' Krumet [t.c.]
 16' Solo Saxophone [t.c.]
 16' Saxophone [t.c.]
 16' Major Vox Humana [t.c.]
 16' Mezzo Vox Humana [t.c.]
 16' Vox Humana Ensemble [t.c.]
 16' Solo Violins
 16' Double Strings [t.c.]
 16' Contra Salicional
 16' Contra Gemshorns [t.c.]
 8' English Horn
 8' Tuba Mirabilis
 8' Solo Trumpet
 8' Chorus Trumpet
 8' Tuba Horn
 8' Chorus Tuba
 8' Trumpet
 8' Diaphonic Diapason
 8' Open Diapason
 8' Minor Diapason
 8' Horn Diapason
 8' Tibia Clausa (ORCH)
 8' Tibia Clausa (SOLO)
 8' Tibia Clausa (FOUND)
 8' Rohrflöte

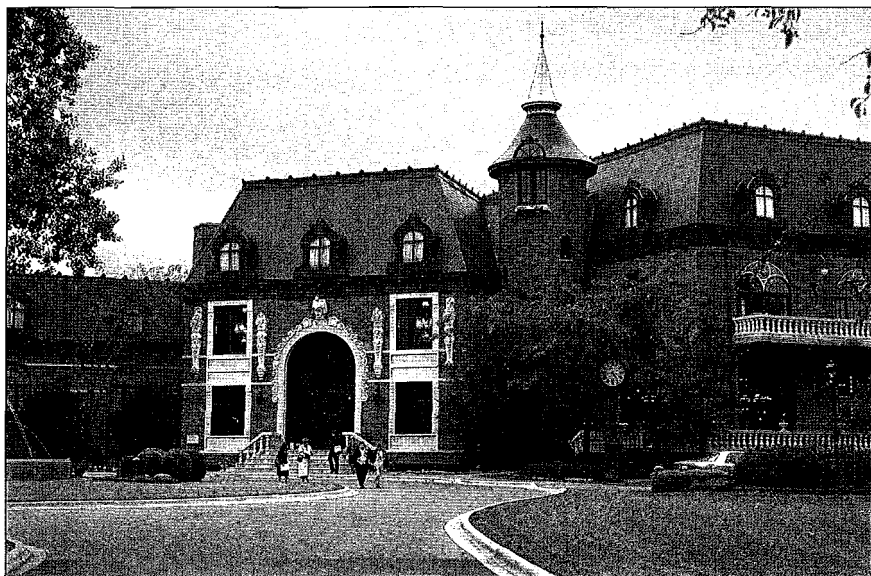
8' Lieblichflöte
 8' Quintadena
 8' Concert Flute
 8' Flauto Dolce
 8' Oboe Horn
 8' Clarinet
 8' Kinura
 8' Krumet
 8' Musette
 8' Orchestral Oboe
 8' Solo Saxophone
 8' Saxophone
 8' Major Vox Humana
 8' Mezzo Vox Humana
 8' Solo Vox Humana
 8' Vox Humana
 8' Minor Vox Humana
 8' Vox Mystica
 8' Solo Violins
 8' Cellos
 8' Violins
 8' Solo Strings
 8' Violes d'Orchestre
 8' Salicional
 8' Gemshorns
 8' Erzählers
 5½' Fifth (FOUND)
 4' Chorus Trumpet
 4' Chorus Tuba
 4' Diaphonic Octave
 4' Octave
 4' Principal
 4' Minor Octave
 4' Horn Octave
 4' Piccolo (ORCH)
 4' Piccolo (SOLO)
 4' Piccolo (FOUND)
 4' Rohrflöte
 4' Koppelflöte
 4' Lieblichflöte
 4' Flute
 4' Nachthorn
 4' Solo Violins
 4' Cellos
 4' Violins
 4' Solo Strings
 4' Violes
 4' Salicets

GREAT *continued*

3½' Tenth (FOUND)
 2½' Twelfth (SOLO)
 2½' Twelfth (FOUND)
 2½' Twelfth (NACHT)
 2' Minor Fifteenth
 2' Fifteenth
 2' Piccolo (ORCH)
 2' Piccolo (SOLO)
 2' Piccolo (FOUND)
 2' Rohrflöte
 2' Piccolo
 2' Nachthorn
 1½' Tierce (FOUND)
 1' Fife (LIEBLICH)
 2' Mixture
 1½' Scharff
 8' Piano
 4' Piano
 4' Solo Harp
 4' Vibraphone
 4' Chrysoglott
 Glockenspiel
 Xylophone
 Sub Octave
 Unison Off
 Octave
 Solo to Great
 Solo to Great (Pizz.)
 Ethereal to Great
 BOMBARDE
Manual III, 61 notes
 8' Trumpet Imperial (unenclosed)
 8' English Horn
 8' Tuba Mirabilis
 8' Solo Trumpet
 8' Chorus Trumpet
 8' Tuba Horn
 8' Chorus Tuba
 8' Trumpet
 8' Diaphonic Diapason
 8' Horn Diapason
 8' Tibia Clausa (ORCH)
 8' Tibia Clausa (SOLO)
 8' Tibia Clausa (FOUND)
 8' Harmonic Flute
 8' Quintadena
 8' Flauto Dolce

BOMB. *continued*

8' French Horn
 8' Oboe Horn
 8' Saxophone
 8' Vox Humana Ensemble
 8' Vox Mystica
 8' String Ensemble
 8' Solo Strings
 4' Solo Clarion
 4' Horn Octave
 4' Piccolo (ORCH)
 4' Piccolo (SOLO)
 4' Piccolo (FOUND)
 4' Harmonic Flute
 2' Piccolo (ORCH)
 2' Piccolo (SOLO)
 2' Piccolo (FOUND)
 1' Fife (SOLO)
 1½' Scharff
 8' Piano
 8' Solo Harp
 4' Vibraphone
 Glockenspiel
 Xylophone
 Sub Octave
 Unison Off
 Octave
 Great to Bombarde
 SOLO *Manual IV, 61 notes*
 8' Tuba Maxima (unenclosed)
 8' English Horn
 8' Tuba Mirabilis
 8' Solo Trumpet
 8' Chorus Trumpet
 8' Tuba Horn
 8' Chorus Tuba
 8' Trumpet
 8' Diaphonic Diapason
 8' Tibia Clausa (ORCH)
 8' Tibia Clausa (SOLO)
 8' Tibia Clausa (MAIN)
 8' Flauto Mirabilis
 8' French Horn
 8' Clarinet
 8' Basset Horn
 8' Cor Anglais



WEDNESDAY

SOLO <i>continued</i>	SOLO <i>continued</i>	ETHEREAL <i>continued</i>	TREMULANTS <i>cont.</i>
8' Kinura	8' Solo Harp	4' Stopped Diapason	Kinura/Orchestral Oboe
8' Krumet	8' Vibraphone	2½' Stopped Twelfth	Solo Trumpet
8' Musette	8' Chrysoglott	2' Stopped Piccolo	Orchestral
8' Orchestral Oboe	Glockenspiel	4' Chrysoglott	Flauto Mirabilis
8' Solo Saxophone	Xylophone	Carillon (unenclosed)	Musette/Krumet/ Vox Major
8' Saxophone	Sleigh Bells	Cathedral Chimes	Orchestral Reeds
8' Vox Humana Ensemble	Ethereal Chimes	Ethereal Chimes	Solo Violin/Basset Horn
8' Solo Vox Humana	Sub Octave Coupler	Sub Octave	Tuba Mirabilis
8' Vox Humana	Unison Off	Unison Off	English Horn
8' Minor Vox Humana	Third Coupler	Octave	Tuba Maxima
8' String Ensemble (major)	Fifth Coupler	Great to Ethereal	Ethereal
8' String Ensemble (mezzo)	Octave Coupler	Solo to Ethereal	ACCESSORIES
8' Erzählers	ETHEREAL	TREMULANTS	Horn Diap. Celeste On
4' Piccolo (ORCH)	<i>Manual V, 61 notes</i>	Tibia Clausa	Major Celestes Off
4' Piccolo (SOLO)	<i>located at opposite</i>	Vox Humana/Saxophone	Minor Celestes Off
4' Piccolo (MAIN)	<i>end of music room</i>	Concert Flute/Salicional	Vibraphone Motor On
4' Flauto Mirabilis	8' Bugle Battaglia	Erzähler/Koppel/Lieblich	Mandolin
2½' Twelfth	(unenclosed)	Open Diapason/ Chorus Trumpet	Marimba Reiterate
(TIBIA ENSEMBLE)	8' Trumpet Imperial	Chorus Trumpet	Percussion Reiterate
2' Piccolo (ORCH)	(unenclosed)	Viol d'Orchestre/Clarinet	Master Expression Off
2' Piccolo (SOLO)	8' Tuba Maxima	Diaphonic Diapason	Divided Expression
2' Piccolo (FOUND)	(unenclosed)	Tuba Horn	Alternate Crescendo
1½' Tierce	8' Stopped Diapason	Chorus Tuba/Violin	
(TIBIA ENSEMBLE)	8' Dulcetts	Gemshorn/Principal/ Minor Diapason	<i>An added array of sound</i>
8' Piano	8' Dulcianas	Rohrflöte/Nachthorn/ Mixtures	<i>effects and auxiliary controls</i>
	8' Vox Humana	Solo	<i>are located in swing-out trays</i>
	8' Vox Humana Ensemble		<i>under the side sills.</i>