

MOUNTVILLE'S NEW U. B. CHURCH IS DEDICATED

Impressive Services Held at St. Paul's on Sunday.

PROGRAMME OF EXERCISES

Large Congregations Were Present During the Entire Day.

NEW STRUCTURE AN IMPOSING ONE

The Church, Which Is Built of Stone and Cost About \$30,000, Follows the Gothic Style of Architecture and Is One of the Most Beautiful in the County—All the Windows, Doors, the Pipe Organ, Etc., Were the Gifts of Members or Friends.

Sunday was a gala day in the history of St. Paul's United Brethren church of Mountville. Rev. J. M. Walters, pastor, for it marked the dedication of their new and imposing stone structure for worship. Appropriate services were held during the entire day and at each one of them the church was taxed to its utmost capacity. On all sides there were words of praise and congratulations for Rev. Walters and his smiling and hard-working congregation and the most

man and Miss Mary B. Musser, vocalists. An excellent programme was rendered as follows: Andante (Weyl); funeral march (Chopin); "Abide With Me" (Liddle); Miss Mary Musser; Pagan, C minor (Rinck); Andante (Schubert); Gavotte (Silas); "O Divine Redeemer" (Gunsel); Mrs. John D. Stehman; "Missa" (Gavotte) (Thomas); "Henry 8th" March (Sutman); Berceuse (DeLille); overture (Zampa); (Herald).

The Congregation.

The congregation numbered 210 members; the Sunday School, 25; the C. E. Society, 80, and the Jr. C. E., 65. Other subsidiary organizations include the Mite Society and the Women's Missionary Society. Unity of purpose and harmony of effort characterize the spiritual life and temporal affairs of the congregation, and between pastor and people—pulpit and pew—there is beautiful cooperation.

Services This Week.

There will be services held in the church every evening this week and sermons will be delivered by the following ministers: Rev. D. S. Babbler, Rev. J. T. Shaffer, Rev. E. Leistikow, Rev. D. D. Lowery, D. D. Rev. J. L. Hughes and Rev. J. A. Lyter, D. D. On Sunday morning and evening Holy Communion services will be conducted by Rev. J. M. Walters, the pastor, and on Monday evening, Rev. Z. A. Weidner will preach the sermon.

The Building.

The church, which is one of the finest in the county and one of which this hard-working and flourishing congregation may justly feel proud, cost a little over \$30,000. It is fashioned after Gothic architecture, with some modifications, and is built of Keokuk marble (quarried in Dauphin county) on the site of the first United Brethren church, erected in 1845, which was torn down in 1870, and replaced by a new church located on the opposite side of the street. The lot on which the first church and the new church were built was donated by Bishop Erb, then sold and repurchased. The bricks used in the second church, and now laid into the new structure, were made in Mountville, where the Mountville Brick Company is now operating its new plant. Hence this is the third

of enduring structure, in harmony with the times.

The furniture of the church and lecture room is of quarters antique oak. The pews are comfortable and substantial, in circular form, with beautifully carved heads. The pulpit, and the pulpit chairs, in colonial design, the communion table, the pews and the carpet were the gift of the Ladies' Mite Society, and cost nearly \$1,400. The furniture and carpet of the Sunday School rooms were presented by the Sunday School.

The principal tower, on the northeast corner, is a massive, imposing and graceful square structure. Its base is pierced by two Gothic doorways, suitably trimmed. These are the main entrances to the church, reached by flights of broad marble steps. The tower is surmounted by a belfry, pierced by eight openings, in which has been hung the old bell, which, for so many years called faithful worshippers to the old church. Above the belfry is a course of dressed stone, surmounted by four large finials on the corners, and four smaller finials, each terminating in a fleur-de-lis. The tower is vaucaused in Italian marble, and the floor is overlaid with tile in neat and tasteful design.

A smaller tower on the northwest corner, affords another entrance. A sixth entrance from the exterior leads into the pastor's study.

The north and east gables of the church are pierced by great Gothic triparted windows, filled with leaded opalescent glass. Numerous other windows throughout the structure are also filled with opalescent glass. Every window within the structure was presented, either as a token of affection and interest in the church, or as a memorial to deceased friends or relatives as follows: Church—Jonas and Anna Garber Stehman, east gable; Jacob Sneath, north gable; H. S. Cohn, tower; Robert and Mary Sneath, organ recess; J. Halla Fridy and Jonas Garber; John Marks and Mary Marks. Lecture Room—John and Fannie Froelich, Joseph and Elizabeth Fry, Louis Kaufman, Mary Ann Witmer, Harry Fry and Mrs. D. T. Robinson.

Other windows were given as follows: Church, by Miss Helen K. Musser, lecture room, by F. M. Copeland and family, Mary Hartman, Elmer and W. H. Cohn; Intermediate Department of the Sunday School, Mr. and Mrs. C. B. Penneyacker, Jr., C. K. Society.

The church is, therefore, beautifully lighted, and at night, when illuminated, it presents a very attractive appearance from the street.

Nearly all the doors are gifts of generous members or friends of the church, and bear a name plate in silver, suitably inscribed, as follows:

Gifts—Karl J. and Leroy R. Walters, John K. Musser, Daniel and Benjamin Witmer, R. R. Robinson and wife, W. S. Robinson and wife, M. G. Musser, Elizabeth Musser, Esther M. Shin, M. C. Robinson and wife, Tom Penneyacker, Anna Barbara Yohn, Cyrus Sautter and wife. Memorials—Anna Weaver, Andrew Garber, Jonas Garber and wife, Abbie V. Copeland, Catherine M. Copeland and Annie Stillinger.

The church pulpit is dedicated to memory of the late Miss Sue Kendig. The pulpit in the Sunday School room is the gift of Mr. and Mrs. John N. Lehman. The painting of the Ascension, in the rear of the pulpit, and the lighting fixtures in the church were presented by Henry S. Innard.

A large two-manual pipe organ was installed by M. P. Mohler, of Hagerstown, Md. The manuals are located in the choir recess, and the organ is built in the left above. The front is handsomely ornamented with decorated pipes and carved wood work. The keyboard is connected with the organ by a simple system of numerous pneumatic tubes, concealed under the floor and in the wall. It is a very well-toned instrument of wide range and power. Its cost is \$2,500.

The specifications are as follows: Manuals: Compass C-C to C, 61 notes.

Pedal: Compass C-C to F, 30 notes.

Great Organ: Open diapason, dulciana, melodia, flute d'amour, principal.

Swell Organ: Open and stopped diapasons, salicional, aeolina, flauto traverso, oboe gamba.

Pedal Organ: Bourdon, Heilich go sheet.

Complers: Swell to great, swell to pedal, swell to great, swell to pedal.

Mechanicals: Swell tremolo, bellows signal, wind indicator.

Crescendo pedal.

Pedal Movements: Forte to great, piano to great (double action); forte to swell, piano to swell (double action); balance swell pedal.

Pneumatic action throughout.

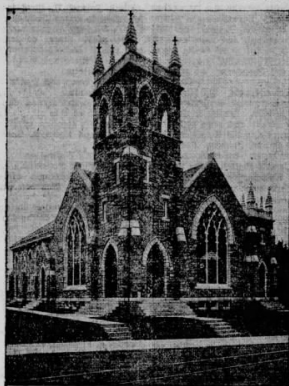
The building is equipped with a complete modern heating and ventilating system, installed by the Kelsey Heating Company. Cold and impure air is drawn off through openings near the floor, and the hot air is introduced through registers about five feet above the floor. The building is adapted for gas and wired for electricity.

An acetylene machine has been installed and will be used until superseded by electricity. The communion fixtures include side brackets, and two massive chandeliers, suspended from the ceiling.

The architect was W. P. Erisman and the contractor for the stonework was John H. Hook, both of Lancaster; John M. Froelich, of Mountville, was the contract carpenter, and he gave the work his personal supervision.

The Building Committee, representing the congregation, consisted of the following:

J. G. Stehman, chairman; Rev. J. H. Witmer, secretary; R. M. Fridy, treasurer; H. S. Tinnel, John P. Gable, John M. Weiler, Adam H. Fisher and John N. Lehman. A marble tablet, bearing their names, appear in the smaller tower.



ST. PAUL'S U. B. CHURCH, MOUNTVILLE.

the most beautiful, and the largest church built by this prosperous congregation.

The exterior dimensions of the new structure are 34 feet in front, along Main street, extending 46 in depth along a public street. The lines of the building are graceful, the structure compact and substantial, and the surroundings harmonious.

Great care and close supervision were exercised in the construction. The tower foundations are three feet thick, built of two stone courses, laid on a solid cement concrete base. The other foundations are 28 inches thick. The pillars also rest on cement bases. The stringers and joists are of seasoned lumber, sufficiently strong and stiff to bear ten times the weight that will ever be imposed. The corner stone having been laid July 23, 1895, the length of time consumed in the building allowed complete settling, and the walls do not disclose the slightest signs of movement.

The pointing is in best Portland cement; the roof is of Pease's Boston slate. Strength, durability, simplicity and gracefulness are characteristic features of the entire structure.

The interior of the building is divided into the church proper, a lecture room, primary room and intermediate Sunday School rooms, with a broad gallery in the east and west sides for Sunday School classes. The different apartments are connected by large openings making the entire floor space available for occasions requiring it, or they can be separated from each other by Reafold rolling doors. There is also an apartment in the rear of the pulpit, known as the pastor's study. All the floors are neatly carpeted.

There are five entrances—two in front and three at the side, all reached by cement walks, with grass plots on each side. The choir is reached through a door in the northwest tower.

The interior walls are sand-finished in cream or terra cotta tints, imparting a warm effect. The ceilings are natural sand finish, with exposed trusses, painted in hard wood. All the window and door trimmings are of chestnut, finished natural. The wainscoting, terminating in a neat band,

the most beautiful, and the largest church built by this prosperous congregation.

The exterior dimensions of the new structure are 34 feet in front, along Main street, extending 46 in depth along a public street. The lines of the building are graceful, the structure compact and substantial, and the surroundings harmonious.

Great care and close supervision were exercised in the construction. The tower foundations are three feet thick, built of two stone courses, laid on a solid cement concrete base. The other foundations are 28 inches thick. The pillars also rest on cement bases. The stringers and joists are of seasoned lumber, sufficiently strong and stiff to bear ten times the weight that will ever be imposed. The corner stone having been laid July 23, 1895, the length of time consumed in the building allowed complete settling, and the walls do not disclose the slightest signs of movement.

The pointing is in best Portland cement; the roof is of Pease's Boston slate. Strength, durability, simplicity and gracefulness are characteristic features of the entire structure.

The interior of the building is divided into the church proper, a lecture room, primary room and intermediate Sunday School rooms, with a broad gallery in the east and west sides for Sunday School classes. The different apartments are connected by large openings making the entire floor space available for occasions requiring it, or they can be separated from each other by Reafold rolling doors. There is also an apartment in the rear of the pulpit, known as the pastor's study. All the floors are neatly carpeted.

There are five entrances—two in front and three at the side, all reached by cement walks, with grass plots on each side. The choir is reached through a door in the northwest tower.

The interior walls are sand-finished in cream or terra cotta tints, imparting a warm effect. The ceilings are natural sand finish, with exposed trusses, painted in hard wood. All the window and door trimmings are of chestnut, finished natural. The wainscoting, terminating in a neat band,

The Services.

The services on Sunday morning were opened by an organ prelude by Prof. Herbert Oldham, P. S. So., director of the department of music at Lebanon Valley College. The scripture reading was by Rev. D. D. Lowery, D. D., presiding elder; Rev. D. S. Babbler, of Middletown, offered prayer, and Rev. W. R. Funk, D. D., of Dayton, O., delivered the sermon. The choir rendered the anthems, "The Day Returns" and "Bless the Lord." Miss Estelle Stehman sang "The Lord is My Shepherd" and there were appropriate hymns by the congregation.

An organ prelude by Prof. Oldham marked the opening of the afternoon service. The choir sang "Rejoice, the Lord is King" in admirable manner. Rev. A. G. Nye, of this city, had the scripture reading and Rev. J. A. Lyter, D. D., of Harrisburg, offered prayer. After a quiet devotional by Mr. and Mrs. C. J. Barr, there were addresses by Rev. Charles Roth, Mountville; Rev. Dr. C. H. Rorer, Columbia; Rev. S. C. Enoch, Columbia, and Rev. E. A. Bousler, of Lancaster, and Rev. Dr. Funk.

In the evening Prof. Oldham gave a third recede, after which the choir sang "Gloria Patri." Rev. S. C. Enoch of Columbia, had the scripture reading. The choir rendered "Sing, All Ye Lands" and Miss Elizabeth Jemel sang a solo, "Consider the Lilies." Rev. Dr. Funk delivered a most able sermon.

After this service the church was formally dedicated for worship. The keys to the building were delivered by the Building Committee to the pastor, Rev. Walters, and he turned them over to the Board of Trustees. Dr. Funk read the Scripture and offered prayer.

An Organ Recital.

On Saturday evening Professor Oldham gave a recital in the church. He was assisted by Mrs. John D. Stehman.