

"NOT A REED INSTRUMENT."

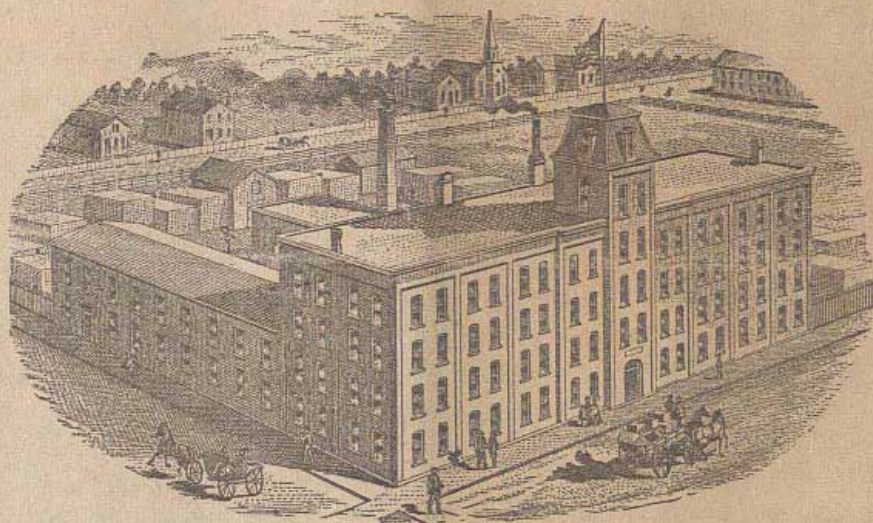
THE
CHORAL PIPE ORGAN,

Made Portable—Ready for Use when taken out of Packing Case—
Requires no Setting Up, Tuning or Regulating.

The Greatest Musical Success of the Age.

S. L. DERRICK,
President.

ALOIS F. LEJEAL
Sec'y and Treas.



MANUFACTURED BY THE

Derrick & Felgemaker Pipe Organ Co.

Inventors, Patentees and Sole Manufacturers,

ERIE, PENN'A.

These Instruments are of a superior quality of tone; equal
to that of the best Stationary Church Organs.

All the essentials which go to make up a perfect instrument are found here happily combined—a full richness and purity of tone—power to increase and decrease from highest to lowest effect and as agreeable a variety as could be desired; it is not an extravagant statement to say that this instrument is certainly far in advance of any of its class.

New York Independent.

The Largest Pipe Organ Establishment in America.

THE HISTORY OF THE CITY OF BOSTON

FROM THE FIRST SETTLEMENT TO THE PRESENT TIME

BY SAMUEL JOHNSON

IN TWO VOLUMES

VOLUME THE FIRST

THE CITY OF BOSTON

FROM THE FIRST SETTLEMENT TO THE PRESENT TIME

BY SAMUEL JOHNSON

IN TWO VOLUMES

VOLUME THE SECOND

THE CITY OF BOSTON

FROM THE FIRST SETTLEMENT TO THE PRESENT TIME

BY SAMUEL JOHNSON

IN TWO VOLUMES

T H E

CHORAL PIPE ORGAN.

We wish to invite attention to our increased facilities for the manufacture of our portable CHORAL PIPE ORGANS.

Since our change of location from Buffalo to Erie we have erected the largest and most complete factory in the country for the manufacture of Organs of every description, which now enables us to supply all orders on the shortest notice.

For the information of those not as yet familiar with our CHORAL PIPE ORGAN, we would say, that our object in inventing such an instrument has been to supply a long felt want which the melodeon or the so-called "reed organ" has failed to satisfy. We deem it unnecessary to dilate on the advantages which a Pipe Organ possesses over a reed instrument; the question must rather be: Can such an Organ as we claim be constructed? Heretofore, certainly, it has been thought impossible to construct a Pipe Organ that can be packed and shipped like a Piano without taking it to pieces; a casual examination however of our CHORAL ORGANS will convince even the most skeptical, that we have invented such an instrument of which hundreds are already in use and never fail to give the most complete satisfaction.

"The Choral Pipe Organ may be shipped by any of the ordinary freight routes and reach its destination in perfect order, all ready for use as soon as rolled out of the packing case—no tuning or regulating being required." The instruments are completed, voiced, tuned and put into thorough order at our factory, the metal and wood pipes firmly set and made fast,—thus precluding all possibility of their receiving indentations, as the pipes are not required to support one-fourth of their own weight. By dint of long experience and after numerous experiments to economize every inch of available space, we have succeeded in

The Largest Pipe Organ Establishment in America.

reducing the bulk to a degree, that our portable CHORAL PIPE ORGAN now takes up scarcely one-third of the space of a stationary Organ with the same number of stops, whilst their beauty of design and finish makes them a desirable acquisition in the drawing room of the most fastidious connoisseur.

The advantages that our CHORAL ORGAN possesses over the small stationary organ can be thus briefly summed up:

"The first cost is the only cost, no expense being incurred for setting up, or moving from one place to another; every component part is well fastened and secured, and, moreover, the system on which they are built necessitates the most thorough and skilful workmanship, so that there is scarcely a possibility of its getting out of order; it has a perfect scale—a superior action—a more refined quality of tone—requires no tuning or regulating—is less liable to be affected by temperature—entirely free from dust—has a prompter speech and a greater range in compass."

The purposes for which the CHORAL PIPE ORGAN will be found more especially adapted, are: For the CHURCH and CHAPEL—SCHOOLS—LODGES and the PARLOR.

A few general remarks on the proper manipulation of the instrument may not be out of place. The character of the CHORAL ORGAN being the same as that of the large Church Organ, the legitimate style of organ playing is earnestly recommended. By "legitimate style" we understand a smooth, connected rendering of the various parts of harmony similar in effect to a well balanced quartet or chorus of voices; all jumping, hacking and disconnected octave and chord passages, such as abound in most melodeon and other reed organ books, should be discountenanced by all who wish to see the grandeur and dignity of the instrument preserved.

The proper use of the stops and their combinations is a matter that must always rest with the good judgment and taste of the performer; a little experience, however, will soon guide the player in selecting stops and in making the necessary combinations in keeping with the character of the composition before him. In working the bellows, whether by hand or by foot, a steady regular motion should be observed.

REMARKS OF THE PRESS.

..... For sweetness and purity of tone as well as superiority of workmanship throughout, we consider them far superior to any instrument with which we are acquainted.

Liberal Christian

So satisfied have we been of its superiority and excellent musical qualities, that we deem this new style instrument worthy of a special notice at our hands.

New York Commercial Journal & Register.

We predict for the portable CHORAL ORGAN a great popularity.

Buffalo Christian Advocate.

He who renders a real and rational pleasure, cheap, is a public benefactor. Messrs. DERRICK, FELGEMAKER & Co. have done this for the Organ, and done it so well, as to probably leave no room for competition.

New York Mercantile Journal.

So compactly are these Organs built, and so firmly is each pipe, and every part of the action so admirably arranged and fixed in their places, that they can and have been transported thousands of miles and when taken out of the packing case were in as perfect order and tune as when they left the factory.

Buffalo Daily Herald.

The portable CHORAL PIPE ORGAN is destined to create a great revolution in the musical world.

Chillicothe Press, Ohio.

..... For capacity it is all that is necessary for any congregation of ordinary size. Of its Portability it is only necessary to say, that it was shipped from the manufactory by rail and arrived here in perfect order.

Lexington Register, Mo.

The Largest Pipe Organ Establishment in America.

STYLE A — Price \$550.

Made Portable—Ready for Use when taken out of Packing Case—
Requires no Setting Up, Tuning or Regulating.

A CHORAL PIPE ORGAN especially adapted to all the requirements of the Home Circle. A true standard and aid in voice culture and the best calculated for the production of pure Harmony and the study of music in its highest and most pleasing branches.

The combined effect of this instrument is orchestral and its variety and refined quality of tone will enable the performer to render all classes of music with the most marked effect; the choice of the performer may be popular airs—familiar melodies of the olden times, or the composition of the great masters—the resources of the instrument will enable him to present them in the most attractive manner.

DESCRIPTION OF CASE AND STOPS.

The Case is of Black Walnut—8 feet 6 inches in height, 5 ft. in width and 2 ft. 10 in. deep—finished in oil with a smooth surface easy to keep free from dust—the front pannels of French walnut polished and solid carvings, presenting a pleasing contrast. The front pipes are of metal and handsomely ornamented in gold and colors.

The following are the stops:

1, Vienna Flute. 2, Aeolina. 3, Harmonic.

Compass of Manuale, 61 notes.

DESCRIPTION:

1. VIENNA FLUTE, 8 ft., full compass of 61 notes, the most perfect imitation of the real flute—rich and clear for running passages and arpeggio movements—soft and mellow in Harmony—most beautiful in combination.

2. AEOLINA—The most delicate quality of tone—very sympathetic and impressive, of that appealing nature, so fascinating to the refined, musical ear, always capable of developing new beauties under the touch of the skillful performer.

3. HARMONIC produces the OCTAVE FLUTE when used in combination with VIENNA FLUTE and gives a most charming effect. When used with the AEOLINA the tone becomes very bright and silvery. With all the stops drawn the instrument will be found nicely balanced, and as the SWELL controls the entire volume, it may be increased or decreased according to the requirements.

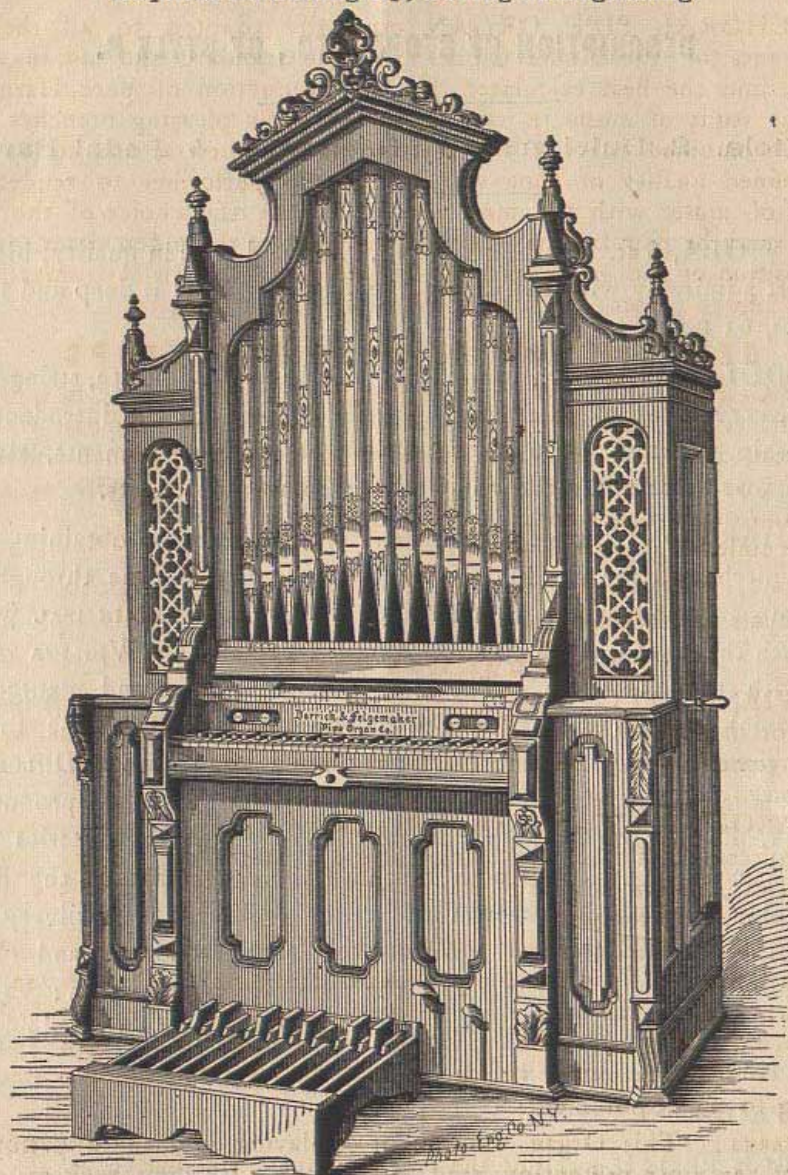
REMARKS: This Organ, though not displaying so many drawstops as some of the more pretentious reed instruments with their registers divided up into Trebles and Basses, or otherwise incomplete, nevertheless possesses more body of tone—more volume and more variety than can ever be obtained from any combination of reeds. Even the most unsusceptible ear cannot fail to be thoroughly impressed with the great disparity existing between the instruments: on the one hand the bright, clear, mellow tone of the organ pipe, and on the other hand the harsh, grating and undecided tone of a reed, so that while the one elevates and refreshes the listener, the other fatigues and depresses him.

The Largest Pipe Organ Establishment in America.

STYLE B — PRICE \$600.

Made Portable—Ready for use when taken out of Packing Case—
Requires no Setting Up, Tuning or Regulating.

One Manuale and Pedale; compass of Manuale 61 notes; compass of Pedale 17 notes.



Size of Case—Length 5 ft.; Depth 2 ft. 10 in.; Height 8 ft. 6 in.

Black Walnut Case, finished in oil, with polished French Walnut panels and solid carvings on front and top; Metal Front Pipes, richly ornamented in gold and colors, the whole presenting a chaste and rich appearance. To save the organist unnecessary trouble, we make the registers complete in themselves, thus accomplishing the same result with 4 registers that other makers ordinarily use 8 registers to obtain.

For description of Stops see next page.

The Largest Pipe Organ Establishment in America.

DESCRIPTION OF STOPS, ETC., OF STYLE B.

1, Viola. 2. Dulciana. 3. Harmonic. 4 Pedal Bass.

1. VIOLA, 8 ft. Metal and Wood, clear and pure in quality, blending most admirably with the voice; the Bass of Wood is deep and full; compass, 61 notes.

2. DULCIANA, 8 ft., Metal and Wood, a soft, delicate, string-like quality, very sweet and pleasing, especially adapted to the introductory to worship, and most beautiful for light voice accompaniments, with a Bass of wood rich and mellow in quality; compass, 61 notes.

3. HARMONIC, a very important arrangement for obtaining the octave pitch, and for continuing the same quality of tone throughout the compass, producing a combination of VIOLA and PRINCIPAL when used with the VIOLA, and a combination of DULCIANA and VIOLINA when used with the DULCIANA. The first, that is VIOLA and PRINCIPAL (Harmonic), besides increasing the volume of tone, will be found to give great clearness to the Harmony; the second, that is DULCIANA and VIOLINA (Harmonic,) is very pleasing and telling in effect, producing a liquid, flowing quality, so desirable in rendering Voluntaries and Pastorals acceptably; it also adds much to the distinctness in the Bass, gives color to the tone through the tenor register, and a silvery effect to the accompaniments. When the VIOLA, DULCIANA, and HARMONIC are drawn, we have in effect the following combination: VIOLA, 8 ft.; DULCIANA, 8 ft.; PRINCIPAL, 4 ft.; VIOLINA, 4 ft.; thus doubling the power of the instrument.

4. PEDALE BASS, compass, 17 notes.

SWELL PEDAL, swelling the entire compass.

BLOW PEDAL, to be blown by the Organist, if desired.

SIDE LEVER, to be blown by second person.

STYLE C—Price \$800.

Made Portable—Ready for use when taken out of Packing Case—
Requires no Setting Up, Tuning or Regulating.

Case of Black Walnut, Gothic style, with gilt pipes in front.
Length, 5 ft. 5 in.; depth, 3 ft. 2 in.; height, 9 ft. 6 in.

6 Registers, 1 Manuale, and 2 Octaves Pedale.
Compass of Manuale, 61 notes.

DESCRIPTION OF STOPS.

1. OPEN DIAPASON, 8 ft., Metal and Wood; tone full and bold. Full compass of 61 notes.
2. GAMBA, 8 ft., Metal and Wood; of a quiet yet penetrating character, well adapted for light accompaniments, interludes or solos. Full compass of 61 notes.
3. FLUTE, 8 ft., Wood and Metal; a beautiful solo stop, mellow and fluty; imparts great breadth and thickness to the general organ tone. Full compass of 61 notes.
4. CELESTE BASS, Metal; delicate and subdued tone. Compass, 17 notes.
5. HARMONIC, doubling the power of each and all the above registers, thus producing in effect 4 ft. PRINCIPAL, 4 ft. VIOLINA, 4 ft. FLUTE, 2 ft. FIFTEENTH, respectively or collectively as used with stops Nos. 1, 2, 3, and 4.
6. PEDALE BASS—Pedal Keys full size; compass, 25 notes.

BLOW PEDAL, for foot, or SIDE LEVER, to be blown at side by second person.

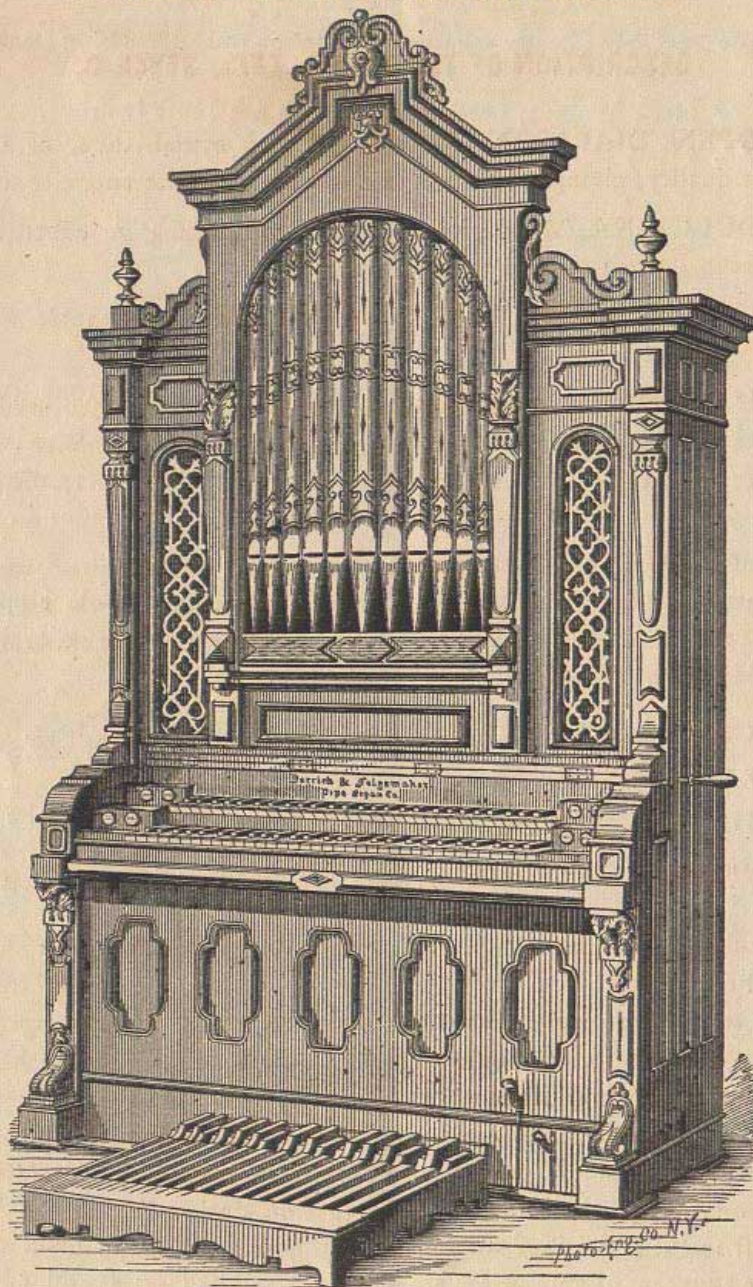
SWELL PEDAL, for full Organ.

REMARKS: When taking into consideration the advantages which the CHORAL PIPE ORGAN possesses over the smaller stationary Organ, this instrument is destined to supersede them in all churches and chapels where an Organ of one Manuale with Pedale will be found adequate to the requirements. Great pains have been taken to give it an exterior in harmony with the place for which it is designed.

STYLE D—Price \$1000.

Made Portable—Ready for Use when taken out of Packing Case—
Requiring no Setting Up, Tuning or Regulating.

8 Registers; 2 Manuales and 2 Octaves Pedals.



Compass of Manuales, 61 Notes; Compass of Pedale, 23 Notes.

SIZE AND DESCRIPTION OF CASE.—Height 10 ft.; width 5 ft. 2 in.; depth 3 ft. 5 in.; of solid Black Walnut and raised Pannels of French Walnut, polished, with Metal Front Pipes beautifully illuminated in gold and colors. For description of Stops see next page.

The Largest Pipe Organ Establishment in America.

DESCRIPTION OF THE STOPS, ETC., STYLE D.

1. OPEN DIAPASON, Metal; full and round tone, of a very resonant quality, giving character and decision to the entire tone-mass.
2. DULCIANA, Metal; very delicate yet telling in effect, and of a very even intonation throughout the compass.
3. UNISON BASS, Wood; deep and full; a Manuale Bass of great efficiency.
4. HARMONIC; producing PRINCIPAL or VIOLINA when used with the OPEN DIAPASON or DULCIANA, and operating on the SOLO ORGAN when the coupler is drawn, giving great vim and brilliancy to the entire combination.
5. FLUTE D'AMOUR; bright and clear, well adapted for running passages where distinctness and promptness of speech are essential; all the more effective when accompanied by the DULCIANA on the Great Manuale.
6. VIOLINA BASS; for solo, or accompaniment to FLUTE D'AMOUR or DULCIANA.
7. COUPLE SOLO ORGAN to GREAT; full compass.
8. PEDALE BASS; Pedal Keys full size; compass 25 notes.

REMARKS: This instrument is a PERFECT GEM, and is sure to find its way into general favor with the musical public; its variety and resources are sufficient to render with excellent effect organ compositions of every description, be they of the severe classical style, or of the more brilliant order, such as operatic and other orchestral-like arrangements. For chapels and moderate-sized churches it will be found to be a great desideratum, for aside from its effectiveness in sustaining and aiding the vocal exercises of the choir or congregation during Divine Service, its beautiful and chaste appearance makes it a fitting ornament in the House of Worship.

**REMARKS OF THE CLERGY AND THE MUSICAL PROFESSION
THROUGHOUT THE COUNTRY.**

To all who are about selecting an organ for the church or parlor, I would call their attention to the portable CHORAL PIPE ORGANS as the great musical success of the age.

REV. M. LUDLUM, Member of Troy, N. Y., Conference.

I am more and more gratified and delighted with our portable CHORAL ORGAN, the more I hear it, and I think it grows in favor with our congregation.

REV. A. BAKER, Lakeville, N. Y.

We have now used your portable CHORAL PIPE ORGAN nearly two years. We are delighted with it. All strangers who attend our church express much surprise at the power and sweetness of our portable CHORAL PIPE ORGAN.

J. V. STRYKER, Rector Trinity Ch., Warsaw, N. Y.

We now take pleasure in saying that we are more than pleased with your portable CHORAL PIPE ORGAN for many reasons. We admire its pure Organ tone, the quality, power, fulness and evenness of that tone.

L. A. BISHOP, Pres't of Board of Trustees, M. E. Ch.

Your portable CHORAL PIPE ORGANS are a great improvement on the reed instruments. I recommend them with pleasure and satisfaction, and wish you every success in your new undertaking.

GEO. W. MORGAN, Organist Grace Ch., New York.

I beg to assure you of the pleasure it gave me lately to meet with your portable CHORAL PIPE ORGANS. I consider them to be admirable and well worthy the attention of those interested in the department and progress of Organ music in this country.

S. P. WARREN, Organist All Soul's Ch., New York.

They are not what has sometimes been called Organs, but the TRUE Pipe Organs, with the full, grand, soul-filling capabilities that no other kind of instrument or any combination of other kinds possesses.

T. S. LAMBERT, M. D., New York.

Similar communications are in our possession from

Rev. G. C. PENNELL,	Champlain, N. Y.
" A. P. RIPLEY,	Buffalo, N. Y.
" J. H. WATERBURY,	LeRoy, N. Y.
" J. R. JENKINS,	Dover, N. J.
" C. C. McINTIRE,	Pontiac, Mich.
" E. N. RAYMOND,	Newyago, Mich.
Mr. CHAS. B. SCHUYLER,	Organist, New York City.
" J. N. PATTISON,	" " " "
" H. G. OVINGTON,	" " " "
" CHAS. F. OLNEY,	" " " "
" JOHN M. ABBOTT,	" " " "
" B. F. CHEESBRO,	" " " "
" J. P. CLARK,	" " " "

and a host of others.

Circulars and Specifications of Stationary Organs of all sizes from \$700 to \$25,000 sent free on application.

The Largest Pipe Organ Establishment in America.