

The choice

of discriminating

artists

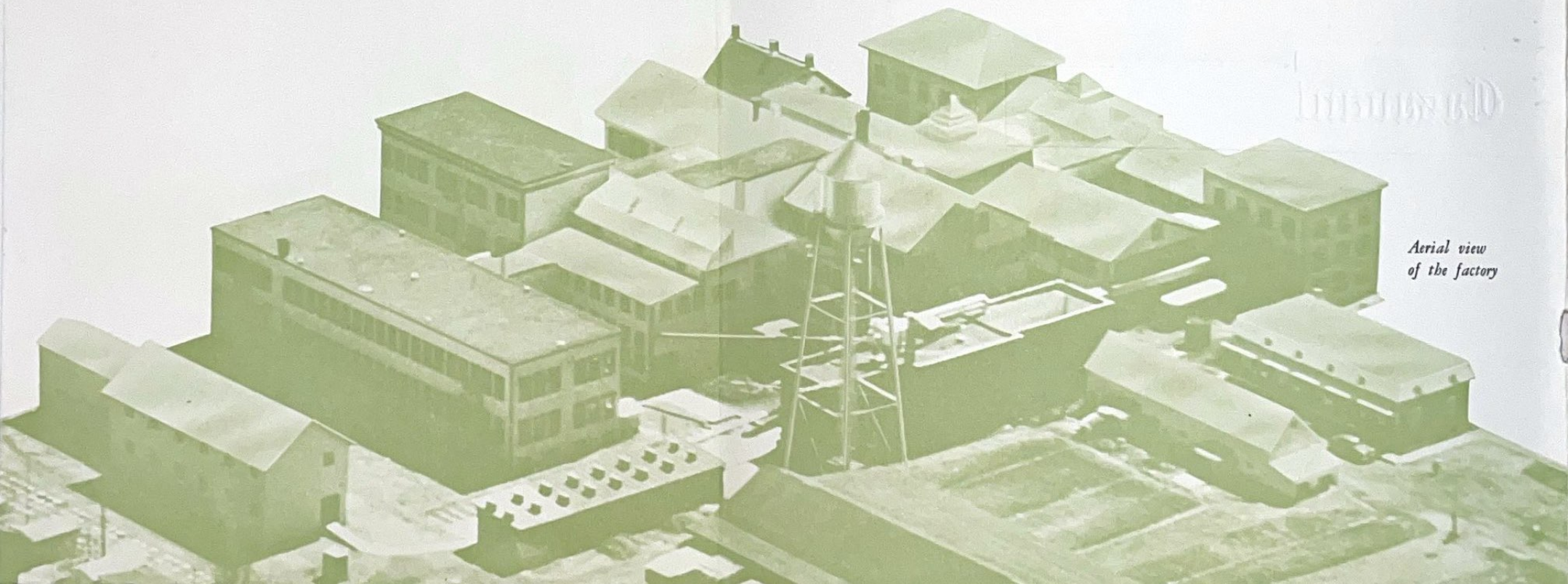
Cavaudant

PIPE ORGANS

S I N C E 1 8 3 7



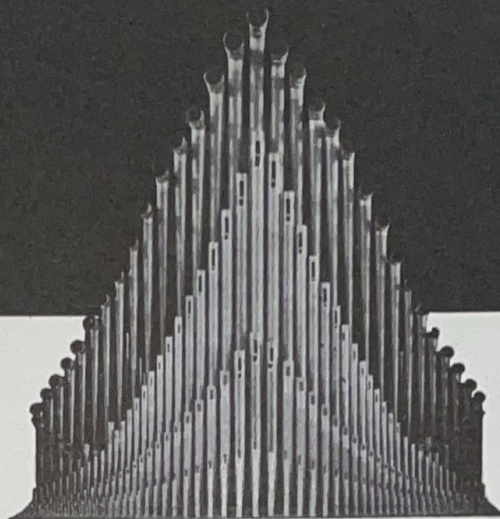
# PIONEERS IN PIPE ORGAN



*Aerial view  
of the factory*



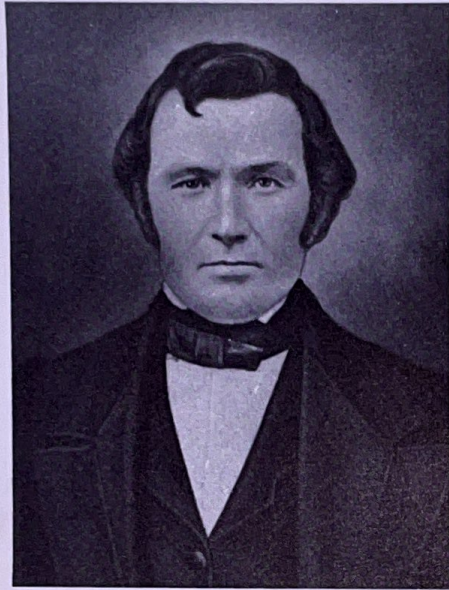
D E S I G N



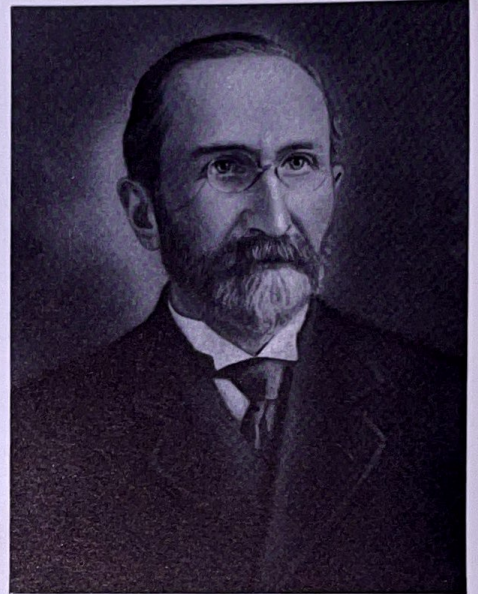
Casavant Frères  
LIMITÉE

ST. HYACINTHE, QUÉBEC  
CANADA

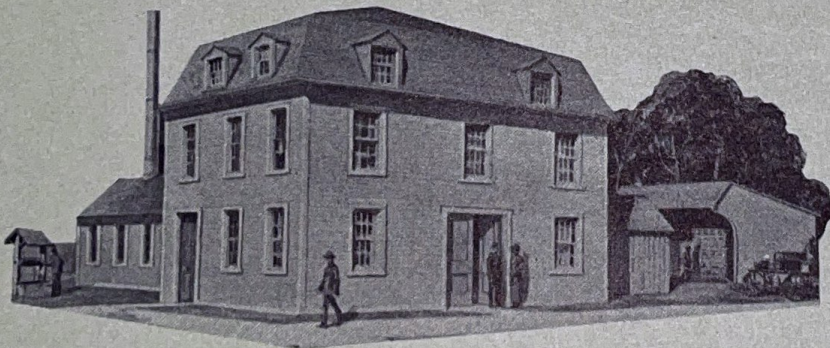




Joseph Casavant  
1807-1874



Claver Casavant  
1859-1929



*The original workshop*





Samuel Casavant  
1855-1933

The history of the Casavant firm began with its founder Joseph Casavant, who, in 1837, completed a small pipe organ at the request of the director of the College at Ste. Thérèse. This modest beginning led to the construction of several organs, in what is now Ontario and Quebec.

His two sons, Claver and Samuel Casavant, grew up with their father's love of his craft. After his death in 1874 they travelled widely in Europe, visiting organ factories, hearing and seeing fine organs in France, Italy, Switzerland, Germany, Belgium and England. They also worked some time in the factory of John Abbey at Versailles.

After their return to St. Hyacinthe in 1879 they turned out several small instruments and in 1885 were awarded the contract for the 82-stop four manual organ for Notre-Dame Church in Montreal. From this point on their firm continued to grow and their fame to spread, until they were to rank with the great builders of all time.



## 120 YEARS OF INCOMPARABLE ARTISTIC

Inventive and resourceful craftsmen, the two brothers pioneered in such fields as electric action, sliderless chests and adjustable combinations. Frequent trips to Europe and elsewhere kept them constantly abreast of new developments, which they were prompt to adopt and improve.

The Casavants had built up during their lifetime not only the finest traditions of craftsmanship among their employees, but also a strong organization to carry on these traditions after them. This organization continues today to stand for the artistic integrity and painstaking care the Casavants cherished.

Eventually, Casavant Organs were to be installed not only in the principal cities of Canada and the United States, but also in South America, British West Indies, South Africa, France and Japan.





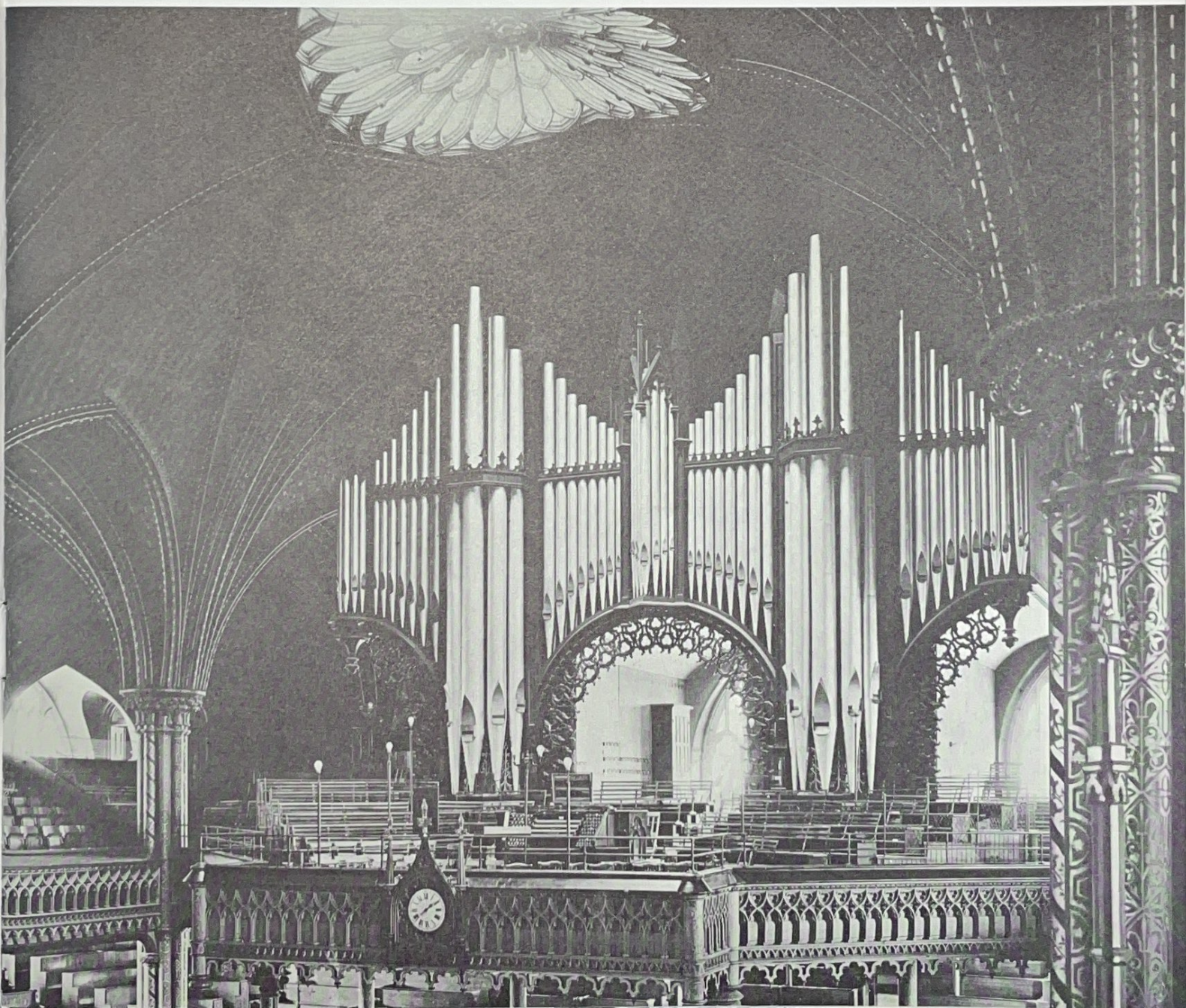
AND TECHNICAL PROGRESS

1890

ÉGLISE NOTRE-DAME, Montréal.

*First use of electro-pneumatic action.*

*Adjustable combinations. Speaking pipes  
of 32-ft. length in the case.*





1892

BASILIQUE NOTRE-DAME, Ottawa.

*Extensive use of electro-pneumatic  
action.*







1893

BASILIQUE SAINT-JACQUES, Montréal.





1909





1897

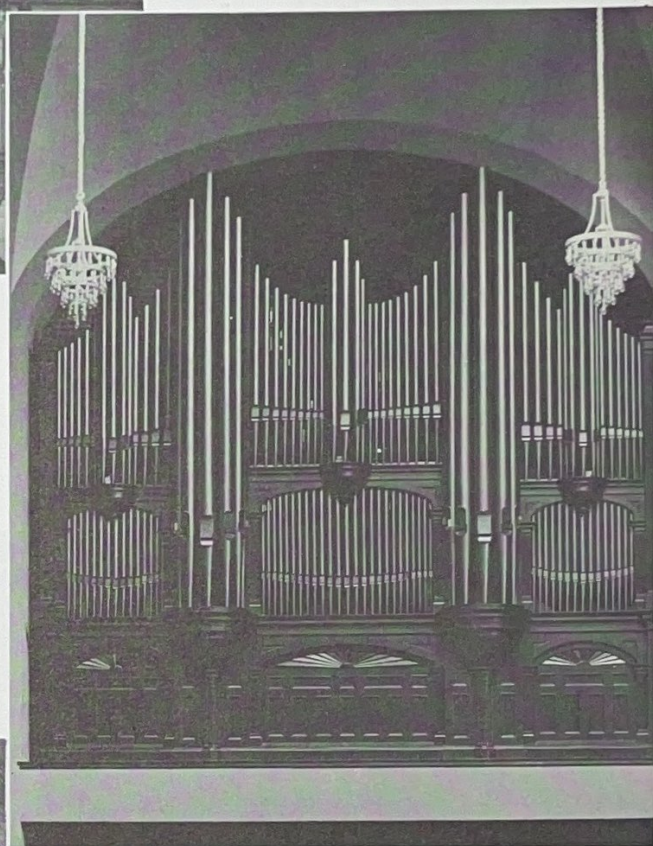
ST. GEORGE'S CHURCH, Montréal.

*Slider chests with electro-pneumatic action.*

CATHÉDRALE ST-JEAN BAPTISTE, Nicolet.

*Electro-pneumatic action.*

*Sliderless chests.*



1903

CHAPELLE DU SÉMINAIRE,  
Trois-Rivières, Qué.

1912

CONVOCATION HALL,  
University of Toronto.

*Divided solo organ.*





EMMANUEL CHURCH, Boston. ▶

*Today still the largest instrument ever to  
leave the Casavant factory.  
Remote control combination action.*

1917



1914

ST. PAUL'S ANGLICAN CHURCH, Toronto.

*Largest organ built by Casavant up to that time. Console with angled jambs.*



1925

UNION COLLEGE, Schenectady, N.Y.

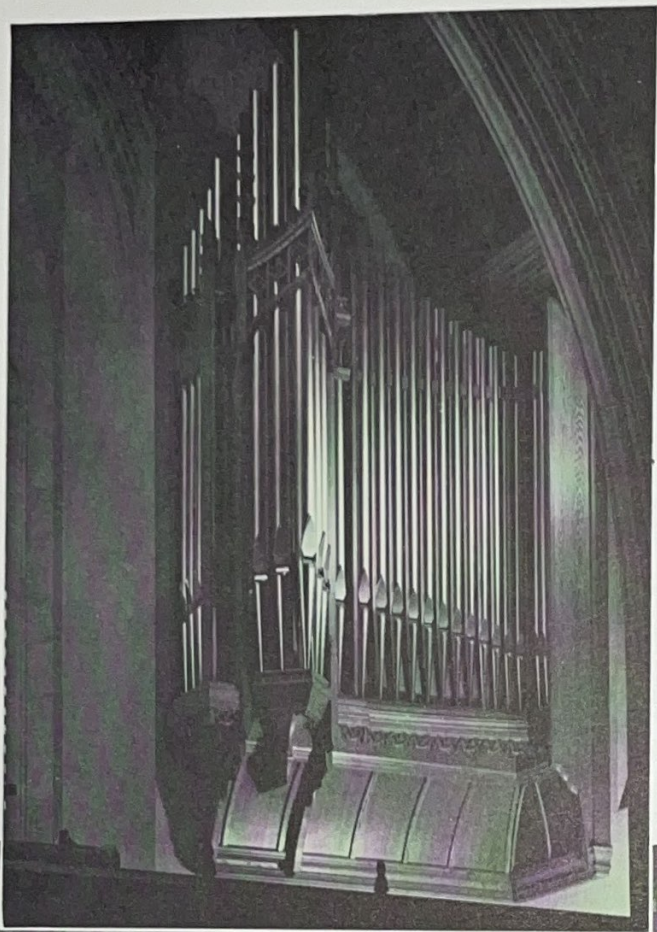
METROPOLITAN UNITED CHURCH, Toronto.

*Pitman chests throughout. Remote control combinations and couplers.*

1930







1949

ST. IGNATIUS CHURCH, Newton, Mass.

1942

FIRST METHODIST CHURCH, Cleveland.



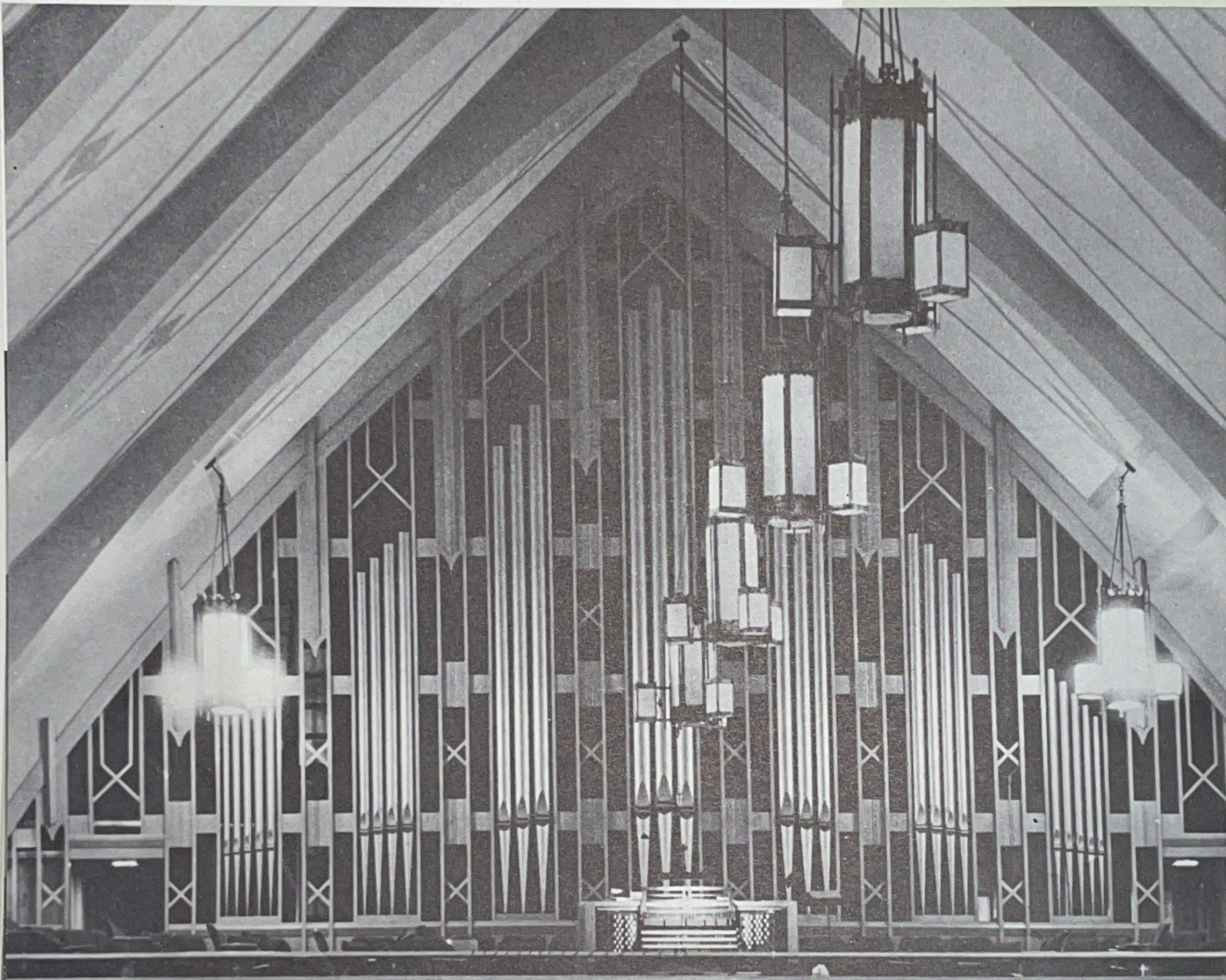


THE CASAVANT ORGAN

*To-day...*



ÉGLISE SAINT-SIXTE.  
Ville Saint-Laurent, Qué.





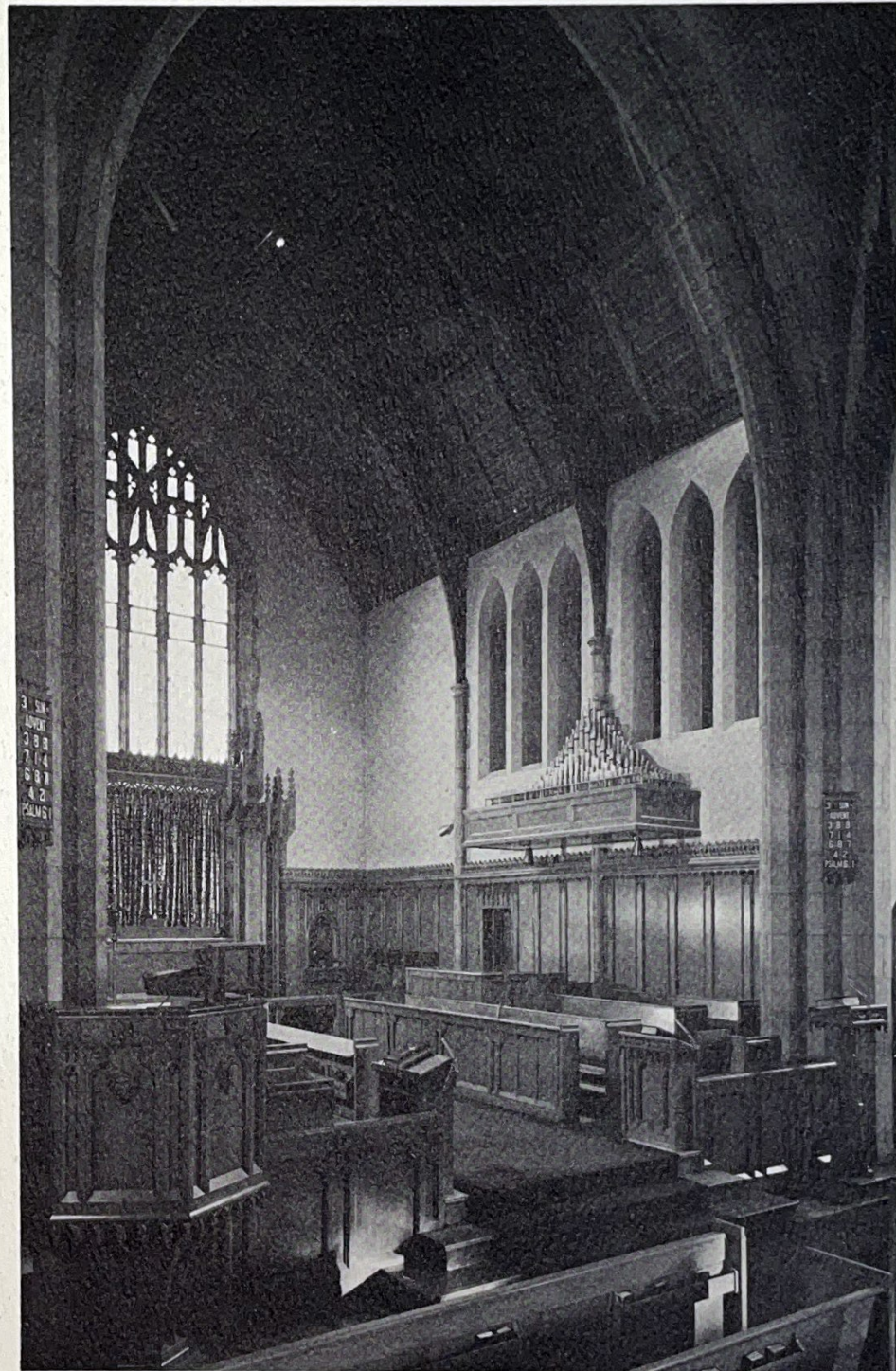
FOREST HILL UNITED CHURCH,  
TORONTO, Ont.



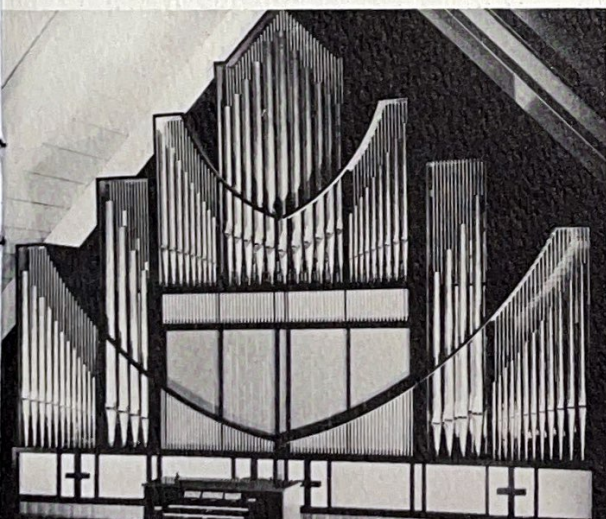
ST. PHILIP'S ANGLICAN CHURCH,  
VANCOUVER, B.C.



ALL SAINTS' CHURCH (KINGSWAY)  
TORONTO, Ont.



EGLISE ST-OCTAVE,  
MONTREAL-EST, Qué.

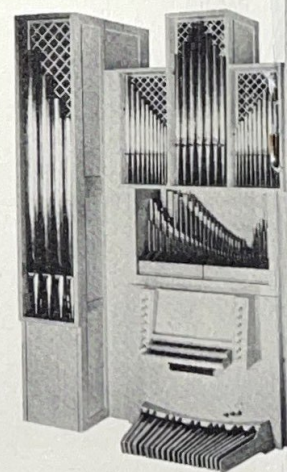
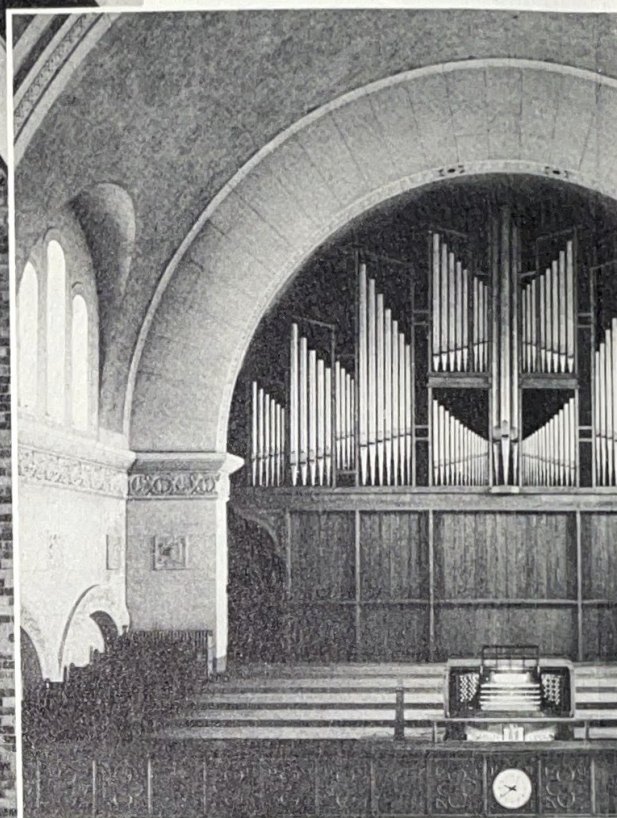




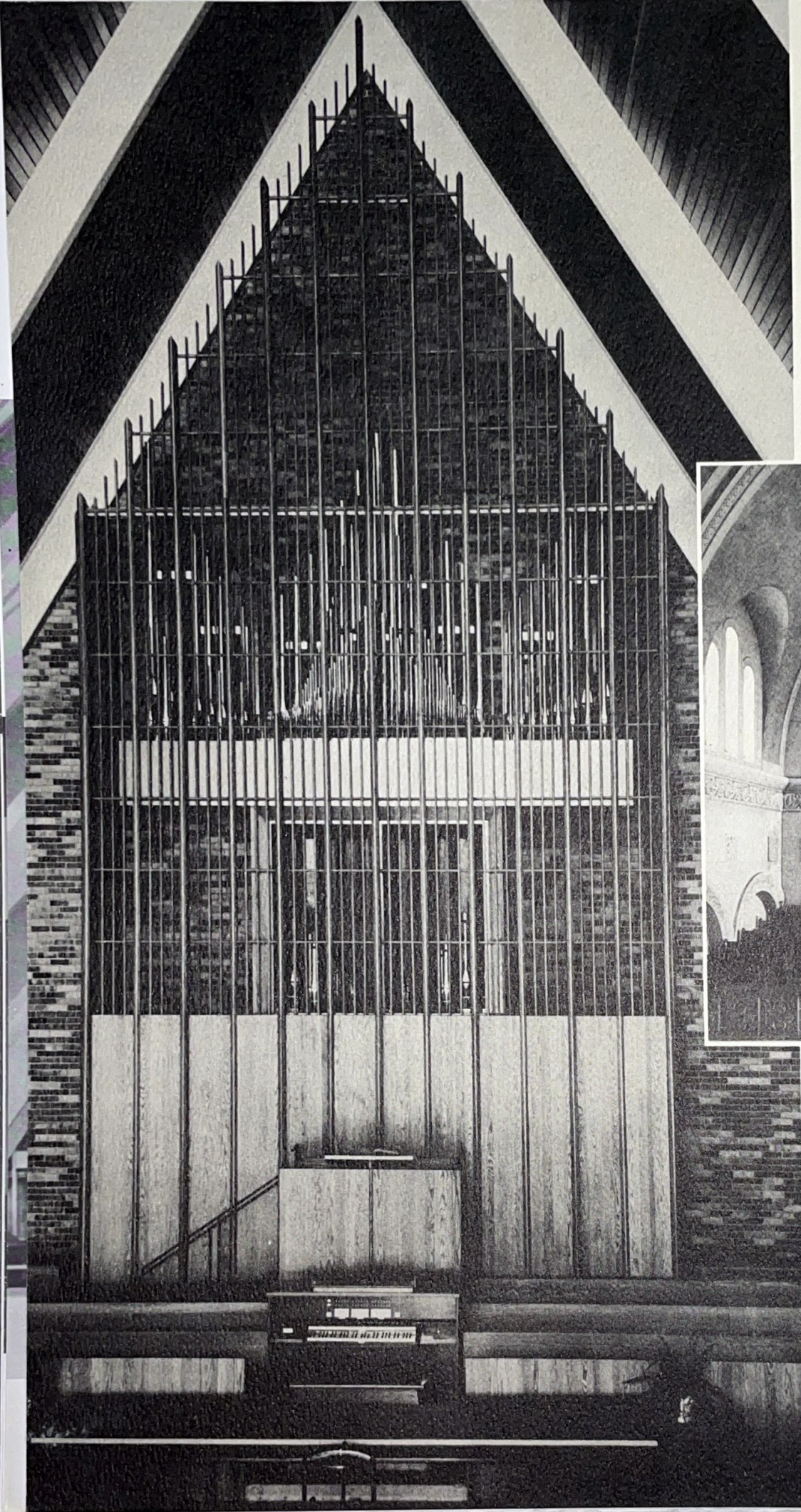
PEACE LUTHERAN CHURCH,  
DETROIT, Mich.

ST. TIMOTHY'S PRESBYTERIAN CHURCH,  
OTTAWA, Ont.

EGLISE DES STS-MARTYRS CANADIENS,  
QUEBEC, Qué.



EGLISE DE L'ASSOMPTION DE NOTRE-DAME,  
ST-HYACINTHE, Qué.

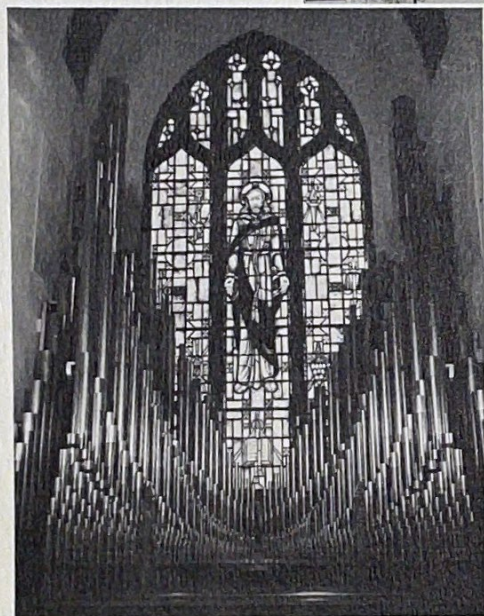




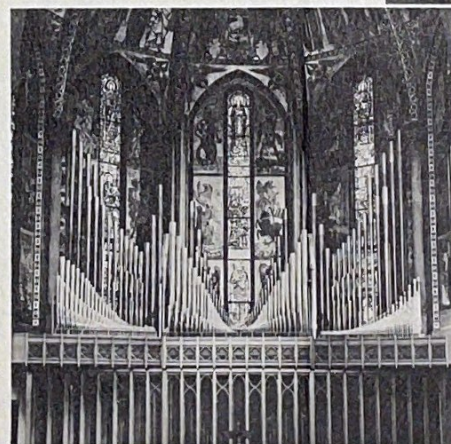


ST. JOSEPH'S CHURCH,  
NEW BEDFORD, Mass.

ST. BERNARD'S CHURCH,  
MOUNT LEBANON, Pa.



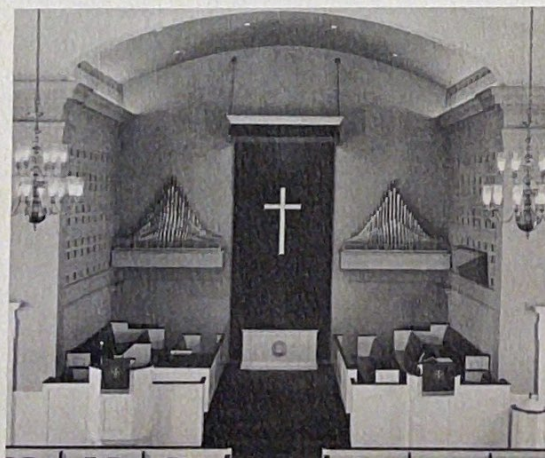
FIRST PRESBYTERIAN CHURCH,  
MENLO PARK, Cal.



ST. BERNARD'S CHURCH,  
MOUNT LEBANON, Pa.

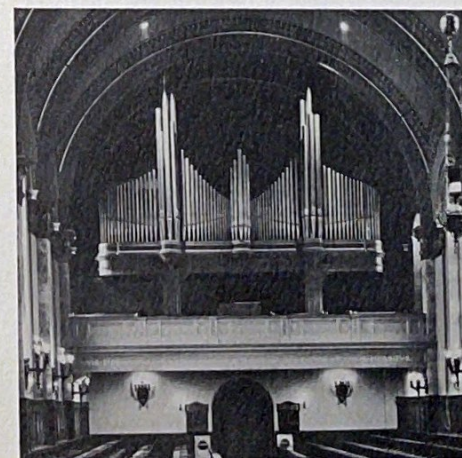


DAME,



FIRST PRESBYTERIAN CHURCH,  
MINEOLA, L.I., N.Y.

ST. JOSEPH'S SEMINARY,  
YONKERS, N.Y.





Certain changes have been made in the composition of the Board, and among the Officers of the Company, which are now as follows:

### THE BOARD OF DIRECTORS

MAJOR FRED N. OLIVER, Chairman of the Board

CHARLES PERRAULT, President and General Manager

E. H. KNIGHT, Assistant to the Chairman

C. J. LAFRAMBOISE, Honorary President (Retired)

JAMES A. ROE, JR., Director

### OTHER OFFICERS OF THE COMPANY

LAWRENCE I. PHELPS, Tonal Director

J. A. CHAGNON, Assistant Vice President

J. E. LEDOUX, Assistant Vice President

E. D. NORTHRUP, Assistant Vice President

P. E. SERVAIS, Assistant Vice President

ADRIEN DUPONT, Treasurer

# Casavant Frères

LIMITÉE

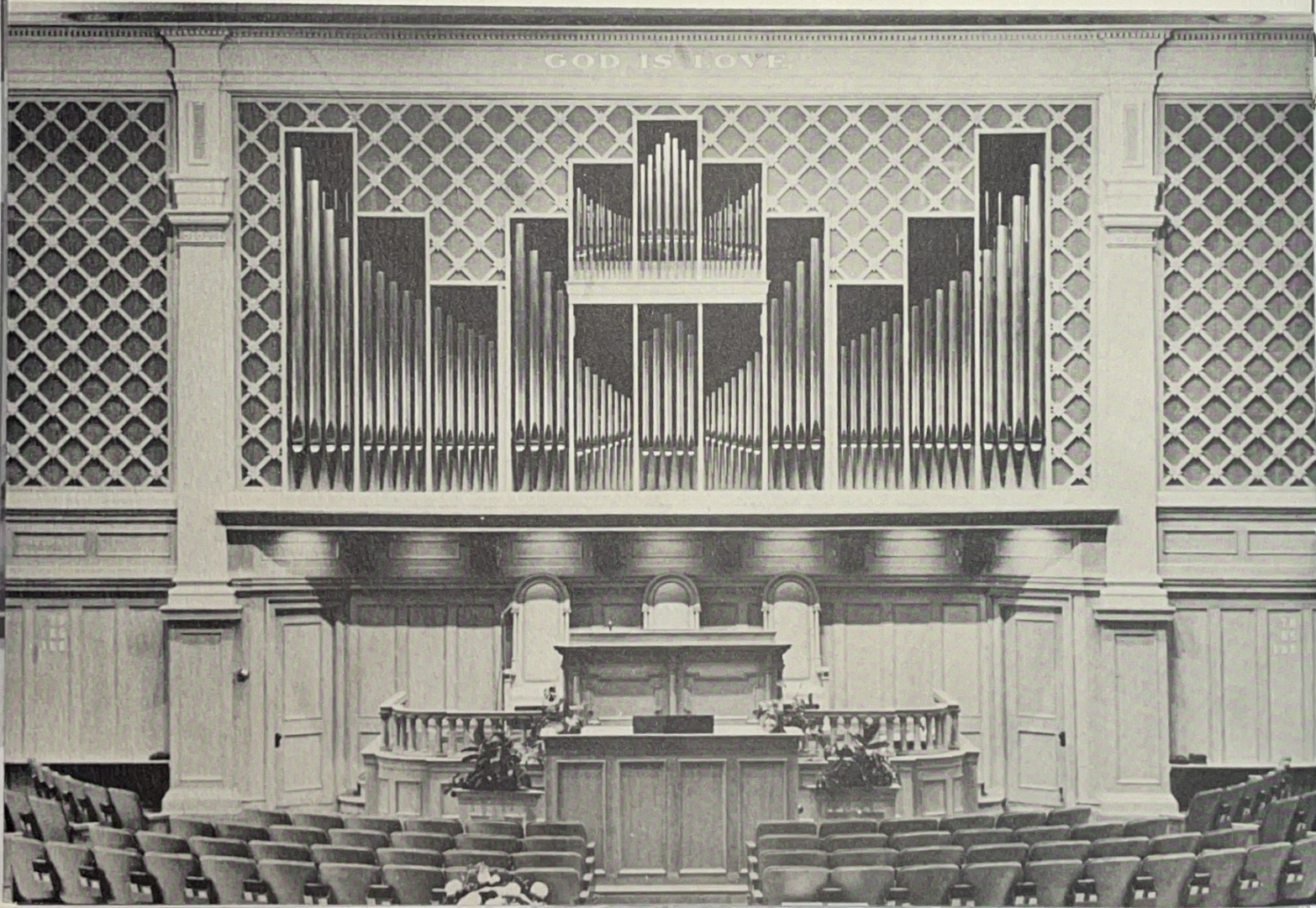
ST. HYACINTHE, Qué.



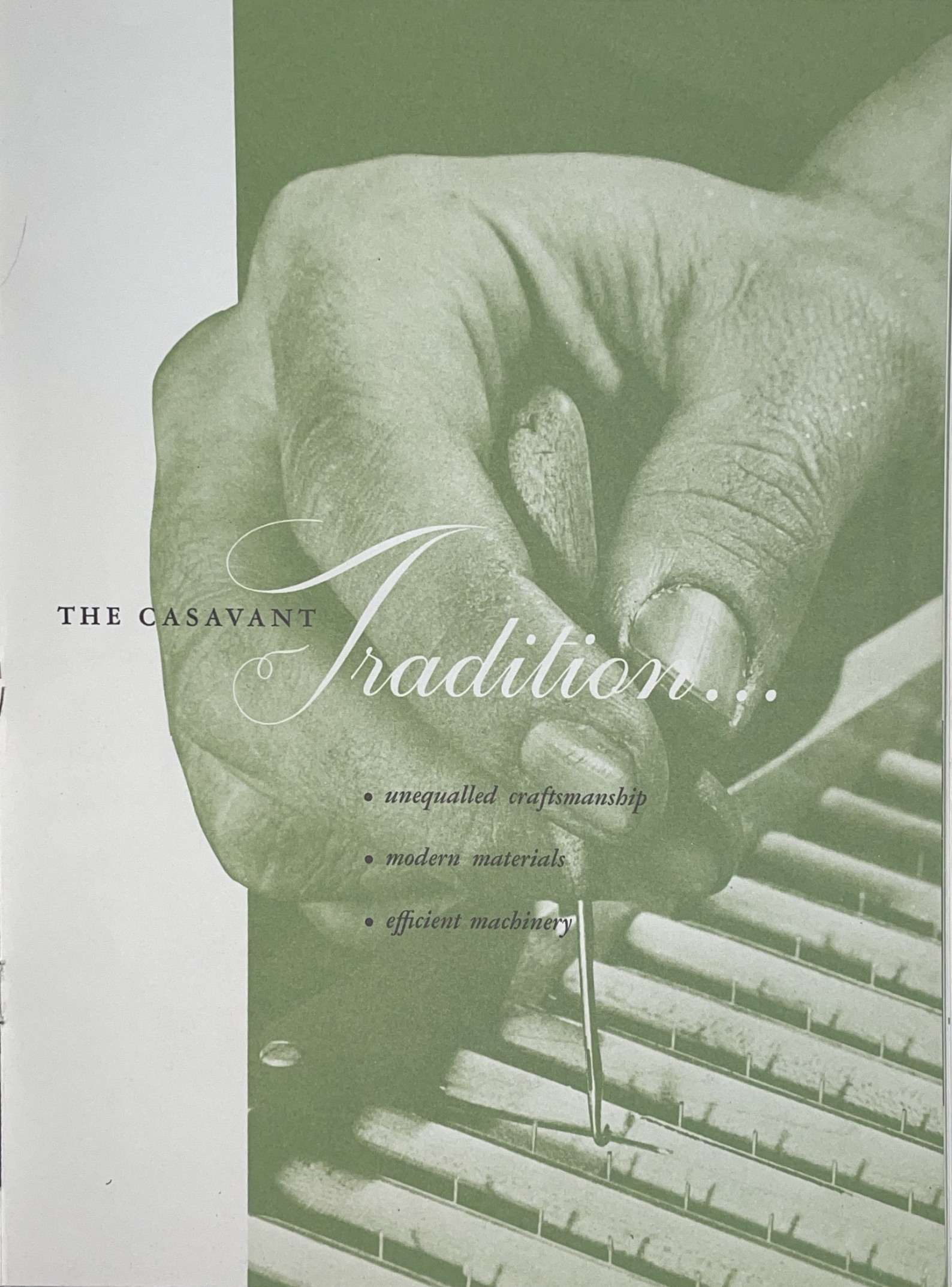


ST. PAUL'S EPISCOPAL CHURCH,  
DEDHAM, Mass.

FIRST CHURCH OF CHRIST, SCIENTIST,  
DENVER, Colorado.





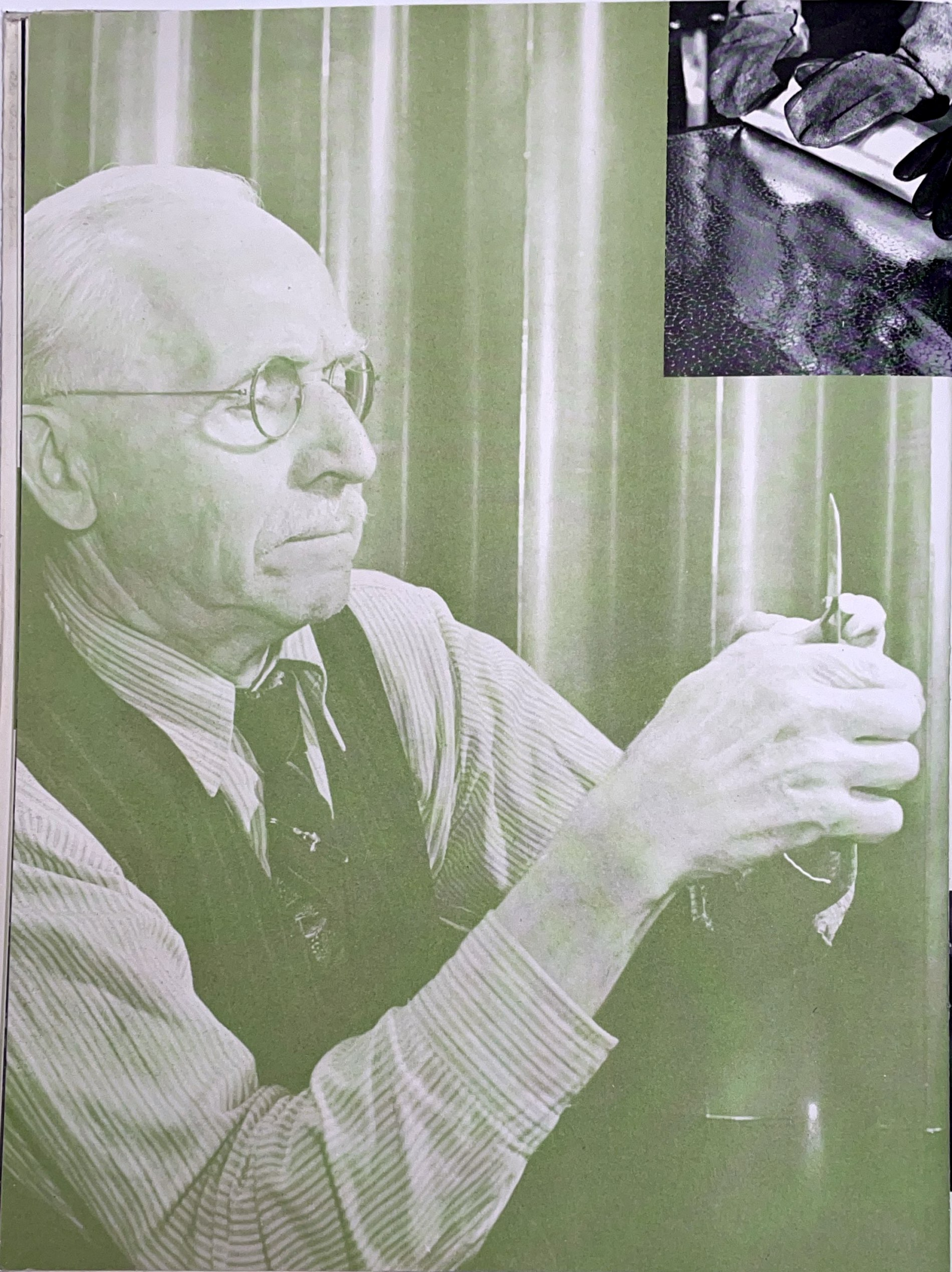


THE CASAVANT

# *Tradition....*

- *unequalled craftsmanship*
- *modern materials*
- *efficient machinery*



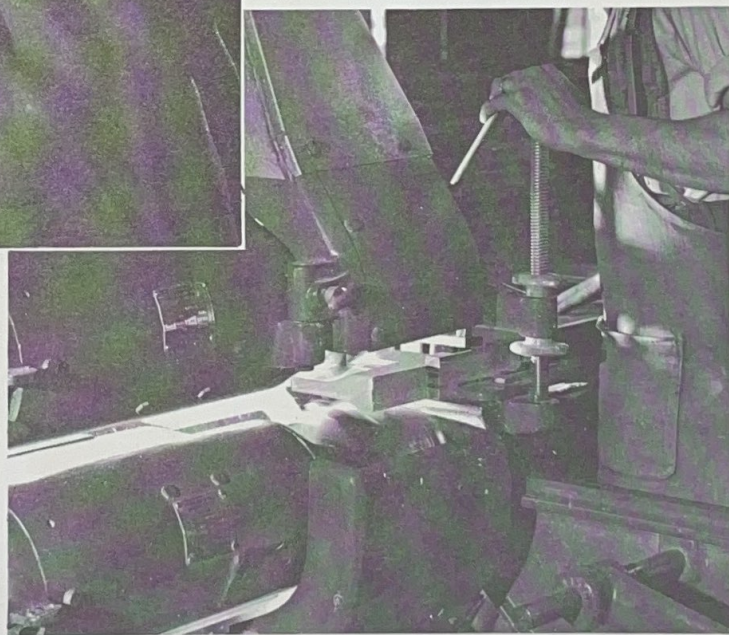






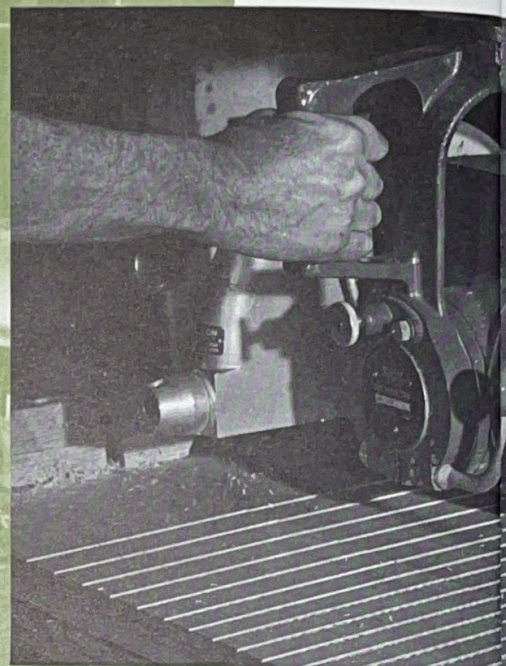
*Carefully selected  
and trained employees,  
and a strong father and  
son tradition, guarantee  
the highest standards  
of craftsmanship.*

*Only the finest  
raw materials,  
gathered from all parts  
of the world,  
are worthy of the  
Casavant organ.*



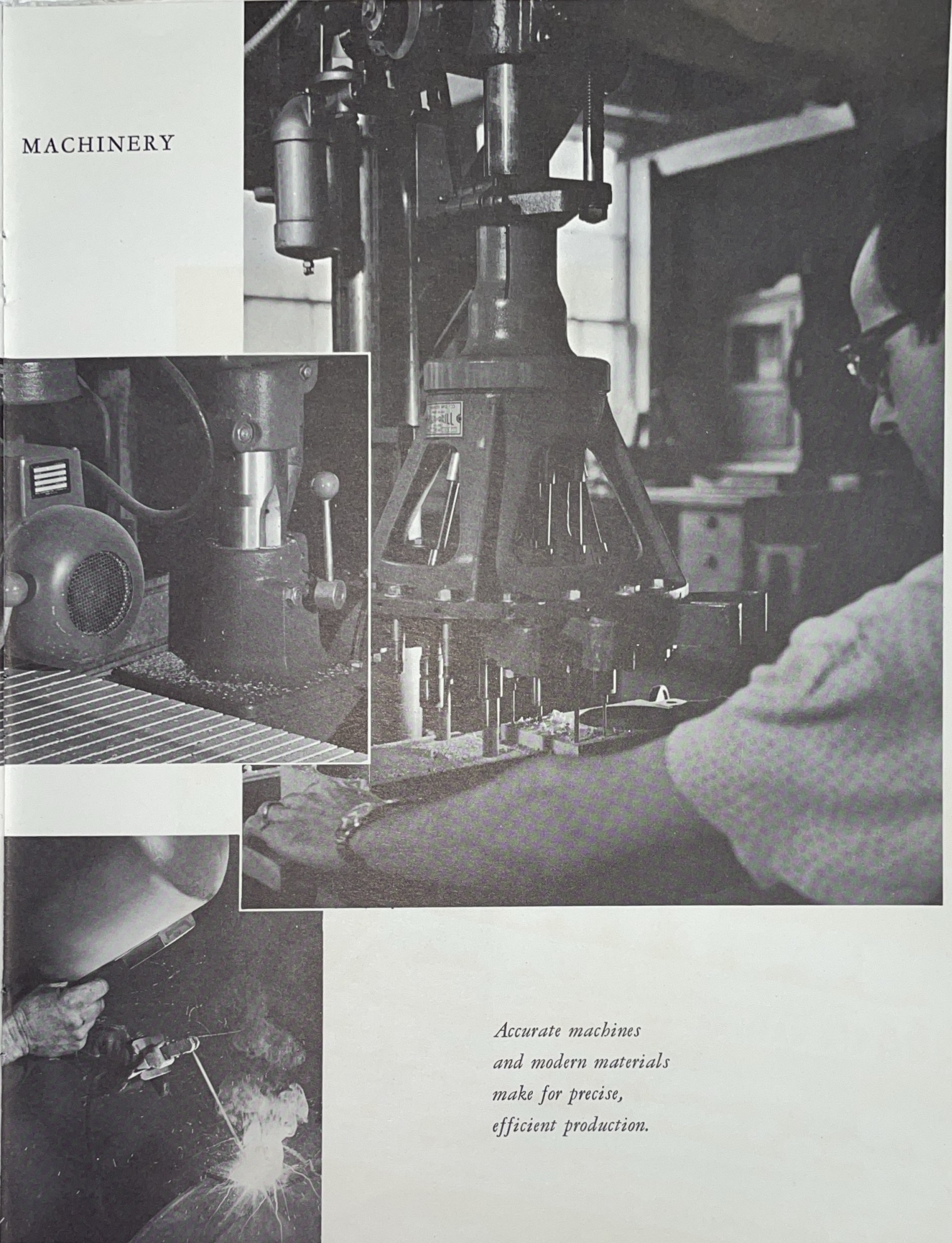


IN ST. HYACINTHE, THE CRAFTSMAN IS ASSISTED BY MODERN



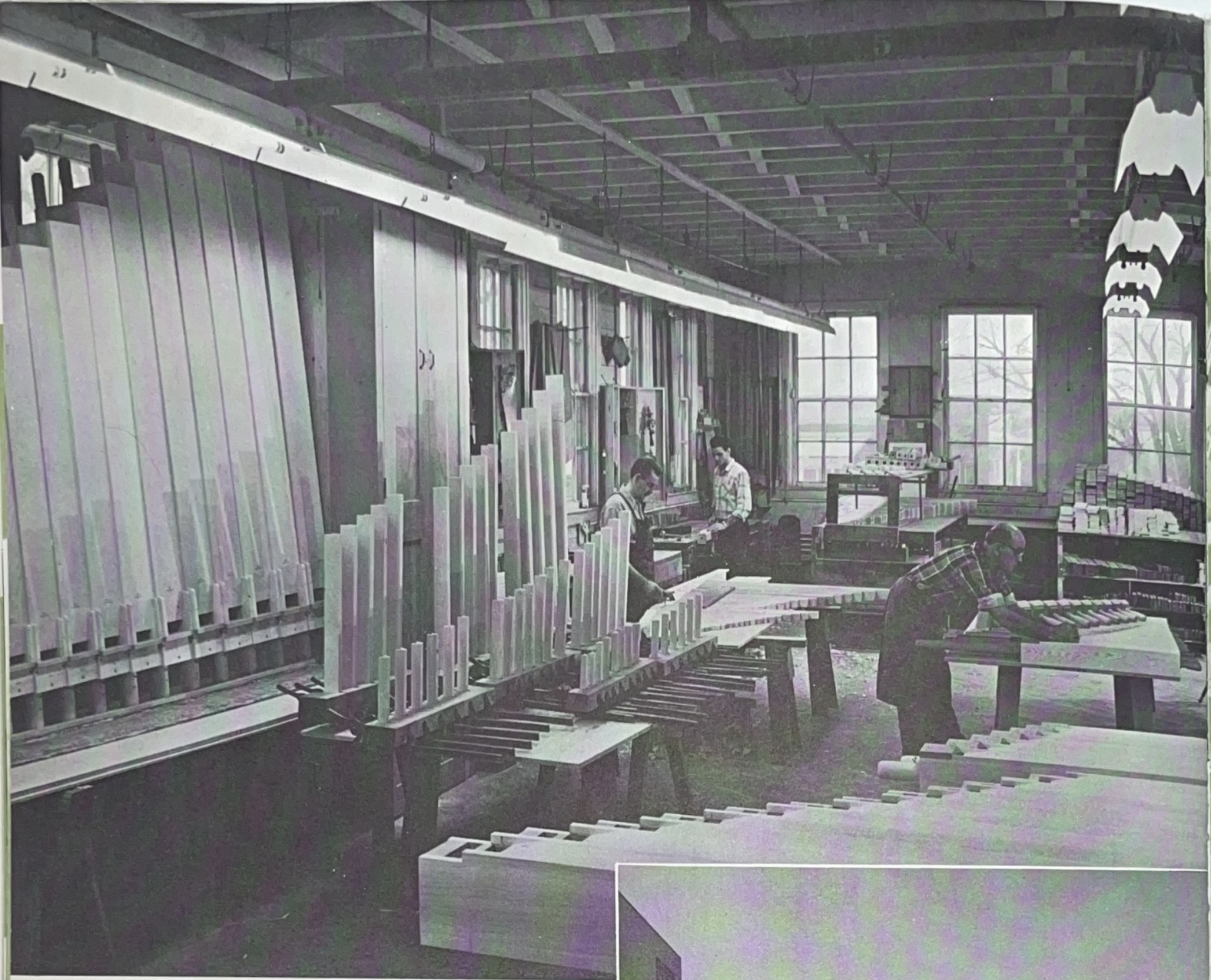


# MACHINERY



*Accurate machines  
and modern materials  
make for precise,  
efficient production.*





*Ample, well-lit  
buildings, mechanized  
lumber handling,  
electronically-controlled  
kilns, all part of  
Casavant's  
manufacturing  
advantages.*











*A masterpiece*



# Casavant *of mechanical precision*

THE WORLD'S FINEST, MOST VERSATILE CONSOLE

Since Salluste Duval and the Casavants developed the rocker-type combination mechanism in 1885, it has been a standard for Casavant draw-knob consoles. Improved in design and built with exacting care, the Casavant adjuster combination action has no equal and fully meets the recommendations of the A.G.O.

The roller contact type of coupler mechanism has been brought by Casavant to unmatched perfection. Silent, free of "arpeggio" effects, and absolutely reliable, the mechanism also incorporates a patented feature whereby the coupler switch is drawn on with a lateral motion, positively preventing the occurrence of dead notes. All contacts are, of course, of sterling silver, and of ample proportions.

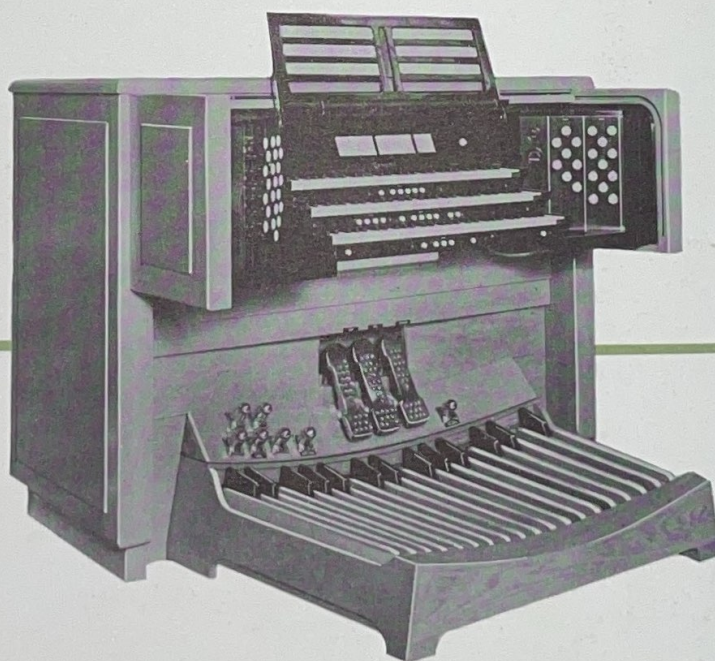


Top-resistance ("tracker-touch") is provided on all Casavant keyboards through the use of an appropriate toggle spring. It gives the organist unequalled ease of playing, particularly with a coupler mechanism which does not increase the resistance of the keys, and is free of the scratchy noise associated with contacts under the keys.

Console interiors are luxuriously finished in highly polished mahogany. The console exteriors are executed in native woods in a style and colour to harmonize with the church furnishings. Chrome plated swell pedals and toe pistons have long been associated with the Casavant Console.

Stop arrangement, location of accessories and the dimensions of console, bench and pedal board conform to A.G.O. specifications.

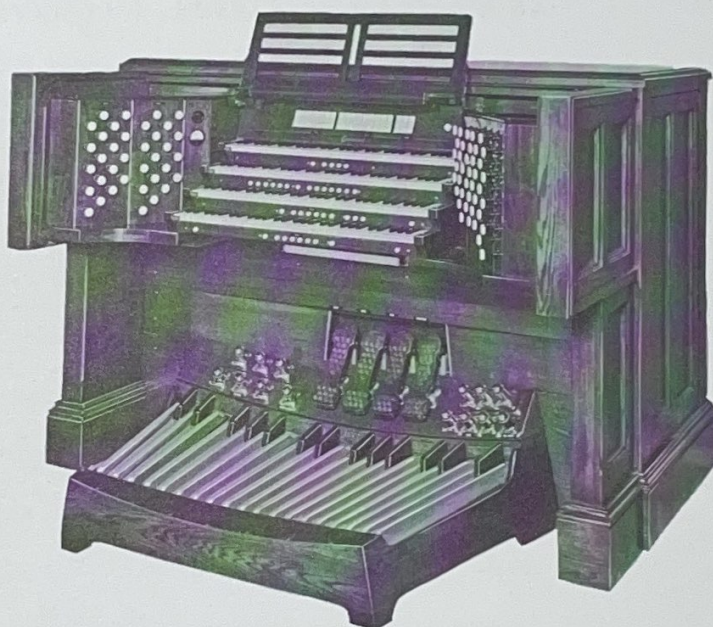
*Three manual  
console of  
contemporary design.*





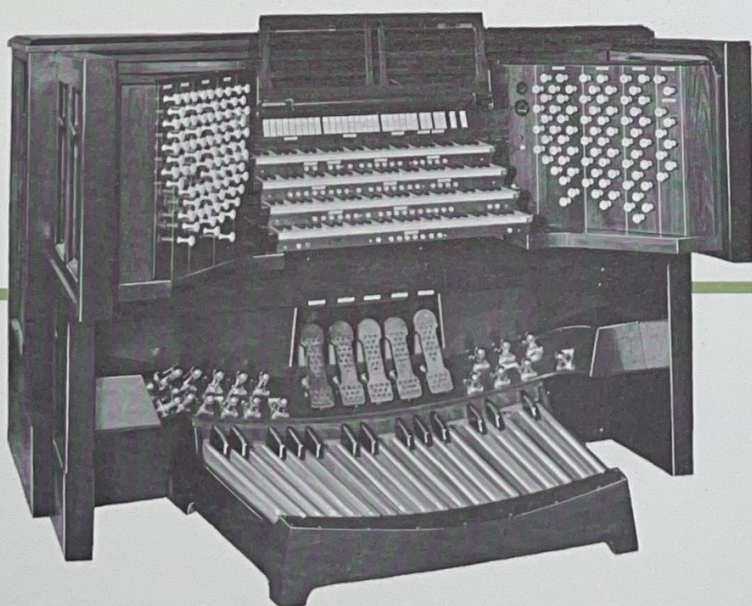


*Three manual  
console  
in bleached  
oak.*



*Large four  
manual console  
of traditional style.*

*Four manual  
console  
with carved  
panels.*



*The Casavant console  
is also built for*

*remote control combination  
and coupler mechanism.*



## *Designing an organ*

Organ building means custom building and each Casavant organ is designed and built to meet the requirements of a specific church. A careful study of the church building, its acoustics and the location of the organ, as well as of the church service and its musical requirements, is needed before a stop list can be drawn up. It is not Casavant practice to bid on a specification without this knowledge. Once the stop list is agreed upon, each stop is meticulously scaled and skillfully voiced so that it becomes a part of a well-integrated ensemble, while retaining a characteristic quality of its own. Recent trends in American and European organ building are interpreted by Casavant with traditional artistic integrity.

## *The organization*

The Casavant organization includes specialists who are available for consultation, without obligation, when a new church, or extensive alterations to an existing building, are planned. Such cooperation, as early as possible in the planning stage, is highly desirable and may bring about considerable savings.



Casavant's field representatives in most large cities of the United States and Canada are always ready to assist anyone seeking information on pipe organs. They also ensure the competent maintenance of any Casavant organ in their territory.

## *An invitation*

A cordial invitation is extended to all who are interested in the organ and in organ building to visit the Casavant factory at St. Hyacinthe, Quebec. This group of skilled craftsmen at work provides an impressive sight, and gives, more appropriately than any printed page, the reasons for Casavant's reputation and continued success.

### THE BOARD OF DIRECTORS

MAJOR FRED N. OLIVER, Chairman of the Board.

C. J. LAFRAMBOISE, President.

CHARLES PERRAULT, Vice President and General Manager.

E. H. KNIGHT, Assistant to the Chairman.

STEPHEN STOOT, Retired Technical Director.

### OTHER PRINCIPAL OFFICERS OF THE COMPANY

LAWRENCE I. PHELPS, Tonal Consultant.

J. A. CHAGNON, Assistant Vice President.

J. E. LEDOUX, Assistant Vice President.

E. D. NORTHRUP, Assistant Vice President.

P. E. SERVAIS, Assistant Vice President.

A. A. CAMPBELL, Manager, Furniture Division.



ACKNOWLEDGEMENT

*Marcel Arel, St. Hyacinthe*

*George Hunter, Toronto*

*Photographers*

*for their special studies*

*of plant personnel*

*and operations*



