

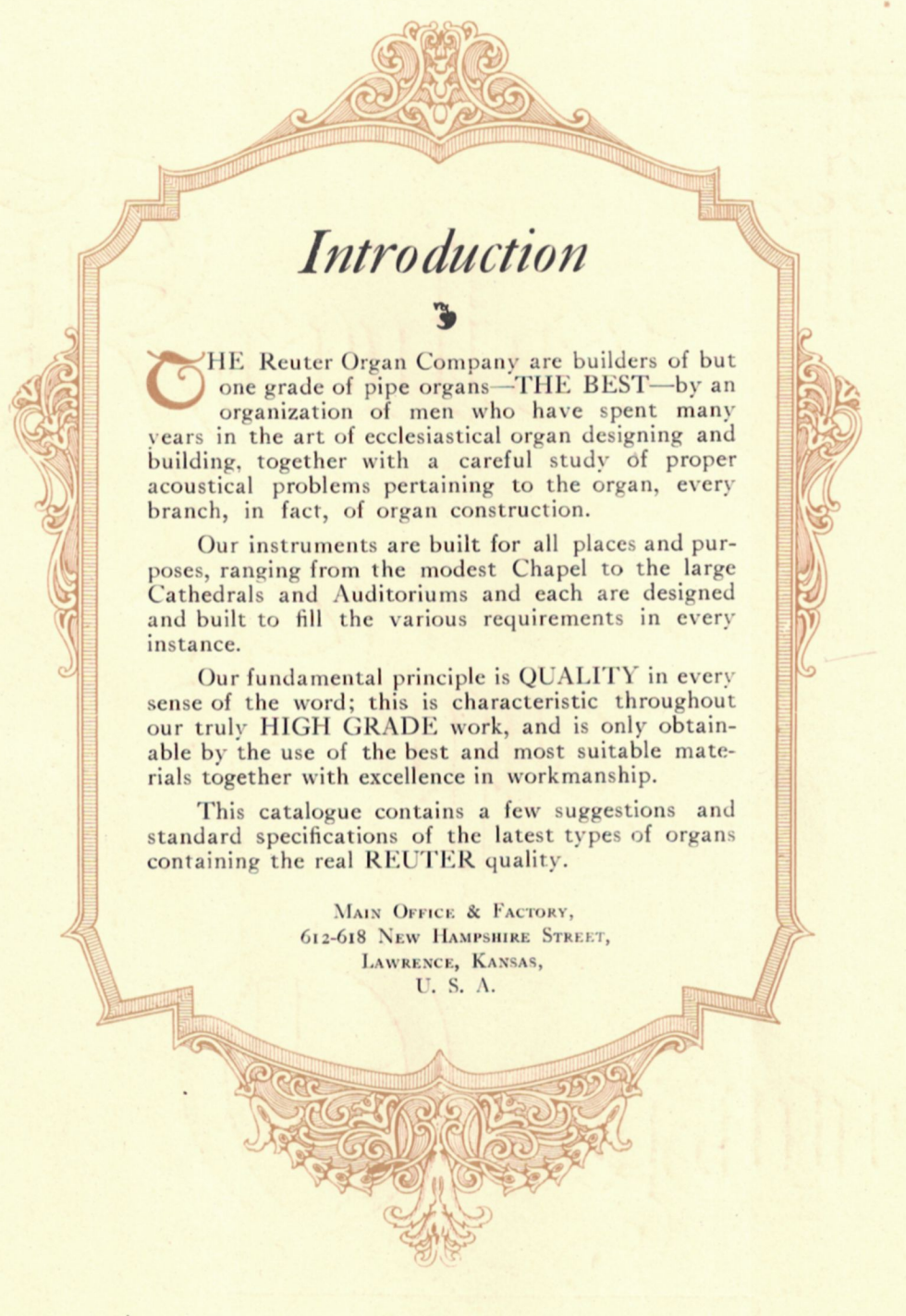
Reuter



Pipe

Organs





Introduction

THE Reuter Organ Company are builders of but one grade of pipe organs—THE BEST—by an organization of men who have spent many years in the art of ecclesiastical organ designing and building, together with a careful study of proper acoustical problems pertaining to the organ, every branch, in fact, of organ construction.

Our instruments are built for all places and purposes, ranging from the modest Chapel to the large Cathedrals and Auditoriums and each are designed and built to fill the various requirements in every instance.

Our fundamental principle is QUALITY in every sense of the word; this is characteristic throughout our truly HIGH GRADE work, and is only obtainable by the use of the best and most suitable materials together with excellence in workmanship.

This catalogue contains a few suggestions and standard specifications of the latest types of organs containing the real REUTER quality.

MAIN OFFICE & FACTORY,
612-618 NEW HAMPSHIRE STREET,
LAWRENCE, KANSAS,
U. S. A.

The Reuter Factory

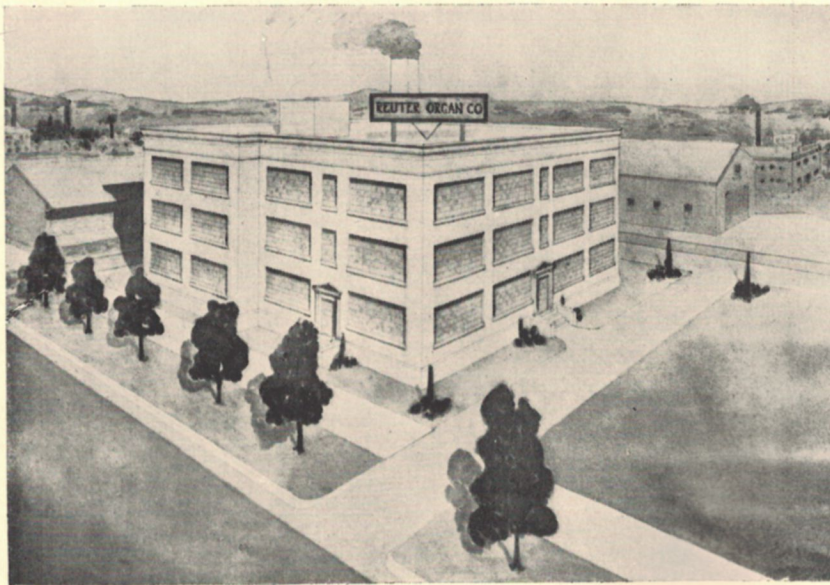
Located at Lawrence, Kansas; a city so well known throughout the United States, being the home of the Great Kansas State University; beautifully located forty miles west of Kansas City, Mo., in the great Kaw Valley, with railroad facilities second to none in the State.

Our plant is one of the most modern in its various appointments, such as location, light, power, fire protection and modern machinery, carrying immense stocks of lumber, metals and other necessities and adjacent to trackage of three large railroads giving excellent shipping facilities in every direction.

The Building having a floor area of 30,000 square feet, includes our spacious assembling department, which is forty feet in height. Aside from this there are the dry kilns, lumber sheds and metal shops, making it possible to build practically every part of our instruments without outside assistance, insuring accuracy of our system.

Our machinery is all of the Electric Unit type driven by power furnished by the Kansas Electric Utilities Co. This unit system giving us the most economical and ready power.

With the technical knowledge of our officers and heads of the different departments it makes it possible for us to execute work of the very highest order and at reasonable prices.



Home of the Reuter Organ Co.

Leadership is only attained by producing goods of merit

The Reuter Electro-Pneumatic Organ

THE Electric Action has long passed the experimental stage and the system of Electro-Pneumatic operation employed in our instruments is of the most simple and reliable construction, requiring only three movable points between the Key and Wind Chest, which feature alone insures reliability.

The Key contacts are self-cleaning and are constructed in such a manner that the key touch is not in the least affected whether one or the whole series of couplers are brought into operation, the keys always retaining their even lightness.

Our Electro magnets, which are of our own design and manufacture, are simple and efficient, requiring the minimum of current in their operation, this low volt current being supplied by specially designed generators, driven directly from the organ motor.

Reuter wind chests are of the 73 note individual diaphragm type, which have many advantages. The most important of these being the close proximity of the valves to the foot of the pipes, this giving a quick and responsive speech to the organ. Another feature being the simplicity of construction, there being but one movable point, that is, the pipe valve itself, thus minimizing any liability of derangement in its action.

We build but one system of action (Electro-Pneumatic) for all our work from the smallest to the largest organs, enabling us to furnish detached consoles and divided instruments even in the smaller organs where necessity demands it.

We cast the metal for, and make all our pipes including reeds, used in Reuter Organs, selecting the best and most suitable metals obtainable, and in our scales and voicing we carefully consider the various qualities and power of tone required for the place they are to occupy.



Assembling Department

Consoles

ONE of the very important features next to good voicing and responsive action is the means placed at the disposal of the organist for operation and control of the instrument. With this in view we have devised a console which gives the performer every possible advantage and convenience.

The keyboards are placed at the standard distance apart and set in such a position that they conform with the relative angle of the arms of the player; this being of a great advantage on the large three and four manual instruments. The key touch provided is lighter at the bottom of the dip than at the top, the standard touch of $4\frac{1}{2}$ ounces is lessened almost one-half as key is depressed, thus giving greater ease in playing and provides sufficient resistance to prevent premature sounding of the organ.

The stop key system used in our instruments is of the most modern type, taking the place of the now obsolete draw knobs formerly placed at either side of the keyboards.

These actuate all speaking registers and couplers, their movement is short but positive and clearly indicate their "On and Off" positions. Placed as they are in groups immediately over the upper manual [see cut next page], they are in direct line of vision with the music, they require no turn of the head, as was necessary with draw knobs at the sides.

Our adjustable combination pistons are another wonderful and unique feature of our consoles. They are placed below their respective manuals and visibly affect the Stop Keys. These are instantly adjustable at the keyboards by simply depressing any desired piston, and, while being held in that position, the various stops or couplers desired in the combination will be connected thereto by simply putting the stop keys on. They remain as set until a change is desired, when they can be cancelled or a new setting made by the same operation. On the larger organs we include in addition to these what are termed Master or Universal Pistons. These control the entire organ and are also adjustable. Aside from their usual position above the upper keyboard they can be duplicated if desired to Toe Pistons just above the Pedal Keyboard. With adjustable combinations of this type, instant grouping of the various registers is possible making a most advantageous arrangement for the performer.

Balanced Electric Swell Pedals are provided which require the minimum foot power, yet have perfect control of the expressive divisions.

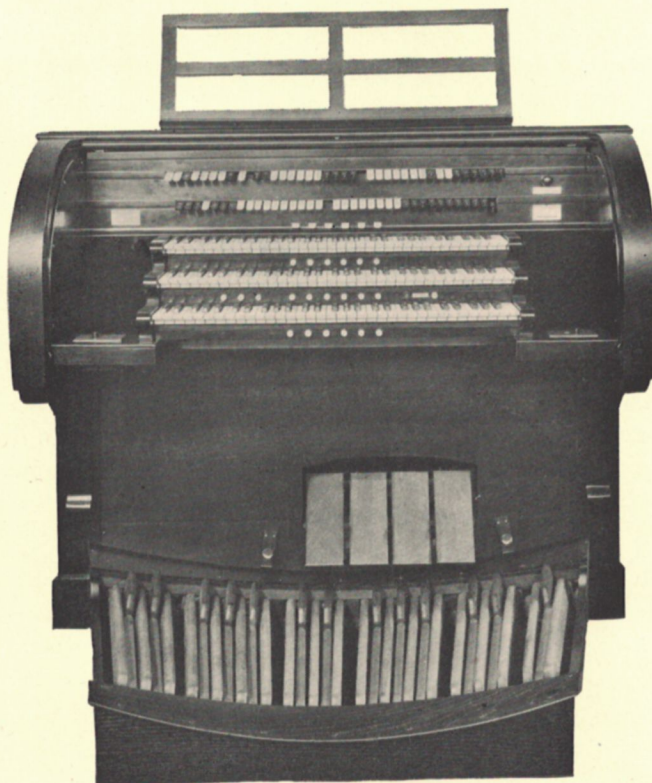
Our consoles are compact and complete in themselves. They contain all couplers and combination action. They require a minimum floor space where they are of the detached type. They are a "marvel of mechanical art" with every essential part placed and constructed in such a manner that they are in constant alignment under all conditions.

Expression Chambers

OF recent years a most remarkable and interesting advance has taken place in the mode of providing and constructing the Swell Box or expression divisions of the organ. Many church architects who have finally come to the conclusion that the organ is of as much importance as any other part of the equipment or furnishings, are now taking the organ builder into consultation and providing a more suitable location and setting for the organ.

Through this co-operation many churches and auditoriums are provided with what might be termed Expression Chambers for the organ, whereby part, or in some instances, the entire organ is inclosed in separate rooms in close proximity to the chancel or choir lofts. These are provided with openings of ample size, facing the choir and auditorium, for the egress of tone. These apertures are filled with the regular heavy Swell expression shades provided by the organ company and operated by electro-pneumatic motors under control of the Swell Pedal at the console. A suitable finish over these can be provided by a Grille or ornamental pipes and in some cases a combination of both, an illustration of the grille treatment as shown on page 25.

With arrangements of this kind the organ is not only more protected from the accumulation of dust and sudden changes of temperature but renders the most magnificent crescendo and diminuendo effects, without which the beautiful expressive qualities of the organ are lost. (Write for special plans.)



Reuter Three Manual Electric Console



Self-Playing Organ Console

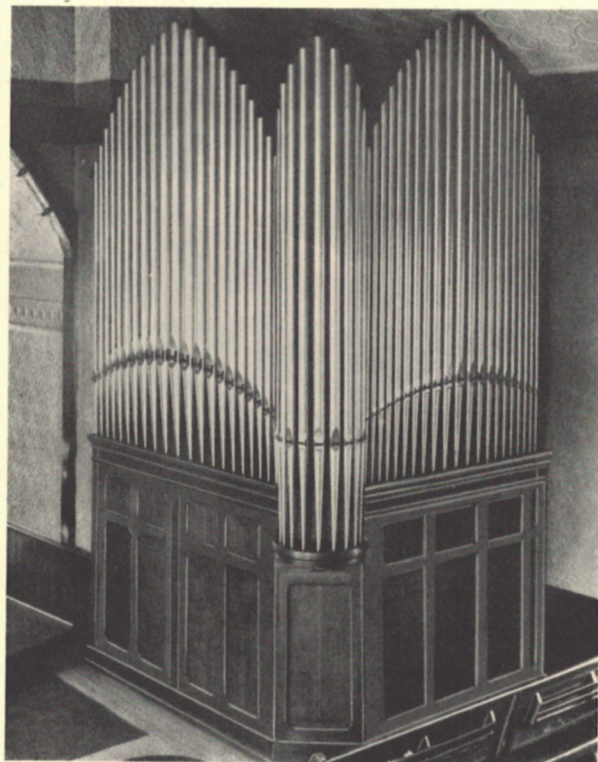
Residence Pipe Organs

Of recent years many palatial residences are being equipped with magnificent pipe organs, adding additional pleasure and refinement to home life.

We are building residence organs of the very highest quality, equipping many with our standard electric self-playing device, upon which all standard music rolls can be used, allowing the performer to manipulate the stop-keys of the various tone colorings, at his own discretion, thereby entirely eliminating the monotony of the ordinary automatic player.

Installations of this character are so varied that we will not attempt to insert herein any definite or fixed plan of arrangement, and solicit correspondence from those interested, whereupon each individual case will receive our most careful attention.

We build Duplexed organs when called upon, but do not strongly recommend this system.



St. John's Lutheran Church

RENVILLE, MINN.

Renville, Minnesota,
August 24, 1922.

Reuter Organ Company,
Lawrence, Kansas.

Dear Sirs:

The Reuter Organ installed in St. John's Lutheran Church at Renville, Minnesota, a year ago is giving perfect satisfaction in every respect. As regards grandeur and richness of tone, durable construction and general artistic finish it is unsurpassed.

Yours very truly,

(Signed) JOHN WEGNER,
President of St. John's Lutheran Church.

Specification, Style No. 9

REUTER ELECTRO-PNEUMATIC PIPE ORGAN

Two Manual and Pedal

Compass of Manuals CC to C₄, 61 Notes

Compass of Pedals CCC to G, 32 Notes

Great Organ

Open Diapason	8 ft.
Dulciana	8 ft.
Melodia	8 ft.

Swell Organ

Open Diapason	8 ft.
Salicional	8 ft.
Aeoline	8 ft.
Stopped Diapason	8 ft.
Flute Harmonic	4 ft.
Tremolo	

Pedal Organ

Bourdon 16 ft.

Couplers

Great Unison Off.		Swell to Great	16 ft.
Great to Great	4 ft.	Swell to Swell	4 ft.
Great to Great	16 ft.	Swell to Swell	16 ft.
Swell to Great	4 ft.	Swell Unison Off.	
Swell to Great	8 ft.	Swell to Pedal	8 ft.
Great to Pedal	8 ft.		

Adjustable Combinations

Operated by Pistons under their respective Manuals.

Adjustable at Keyboard and visibly affecting Stop Keys.

Four pistons affecting Great Stops, Couplers and Pedal registers.

Four pistons affecting Swell Stops, Couplers and Pedal registers.

Accessories

Balanced Swell Pedal.

Balanced Crescendo Pedal.

Great to Pedal Reversible.

Crescendo Indicator.

Organist's Bench.

A Centrifugal Electric Blower and Generator Outfit.

Detached console if desired.

"REUTER" QUALITY IS PARAMOUNT



United States Army Post Chapel

FORT LEAVENWORTH, KANSAS

Ft. Leavenworth, Kansas,
Chaplain's Office,
March 16, 1922.

Major M. E. Drew,
National Soldiers' Home,
Leavenworth, Kansas.

My Dear Major Drew:

After studying the organ proposition for the Chapel at this Army Post for over a year, our committee, two expert organists, several musicians of high ability, including Major Leigh C. Fairbank, made several trips to Kansas City and elsewhere, finally went to Lawrence to inspect the Reuter Plant upon the invitation of Mr. W. C. Verney, their genial Sales Manager. When I tell you that our committee, upon giving their report to a larger business committee consisting of the Commanding General, his Executive Officer and Adjutant and others, the order was placed within 48 hours, it is evidence that we consider them a fine organization to deal with.

It is my candid opinion that the Reuter Organ Company turns out one of the finest instruments on the market today. And besides, they are a most satisfactory concern to have business dealings with. I commend them to you without hesitation.

Yours cordially,

(Signed) F. C. RIDEOUT, *Chaplain.*

Specification, Style No. 11

REUTER ELECTRO-PNEUMATIC PIPE ORGAN

Two Manual and Pedal

Compass of Manuals CC to C₄, 61 Notes

Compass of Pedals CCC to G, 32 Notes

Great Organ

Open Diapason	8 ft.
Dulciana	8 ft.
Melodia	8 ft.
Flute d'Amour	4 ft.

Swell Organ

Open Diapason	8 ft.
Salicional	8 ft.
Aeoline	8 ft.
Stopped Diapason	8 ft.
Flute Harmonic	4 ft.
Tremolo	

Pedal Organ

Bourdon	16 ft.
Lieblich Gedeckt	16 ft.

Couplers

Great Unison Off.		Swell to Great	16 ft.
Great to Great	4 ft.	Swell to Swell	4 ft.
Great to Great	16 ft.	Swell to Swell	16 ft.
Swell to Great	4 ft.	Swell Unison Off.	
Swell to Great	8 ft.	Swell to Pedal	8 ft.
Great to Pedal	8 ft.		

Adjustable Combinations

Operated by Pistons under the respective Manuals.

Adjustable at Keyboard and visibly affecting Stop Keys.

Four pistons affecting Great Stops, Couplers and Pedal registers.

Four pistons affecting Swell Stops, Couplers and Pedal registers.

Accessories

Balanced Swell Pedal.

Balanced Crescendo Pedal.

Great to Pedal Reversible.

Crescendo Indicator.

Organist's Bench.

A Centrifugal Electric Blower and Generator Outfit.

Detached Console if desired.



St. Paul's Evangelical Church

WATERLOO, ILLINOIS

Waterloo, Illinois,
September, 18, 1922.

The Reuter Organ Co.,
Lawrence, Kansas.

Dear Sirs:

The pipe organ purchased from you by the St. Paul's Evangelical Church about five years ago is giving good satisfaction. There is no doubt in my mind that if this congregation were again in the market for a pipe organ we would not hesitate to place the order with you.

Your dealings with us have been absolutely honest and fair, and I personally believe that no congregation will make a mistake by purchasing a Reuter Organ.

Wishing you much success in your new home, I am,

Respectfully yours,

(Signed) REV. G. F. BRINK,
Pastor St. Paul's Evangelical Church.

Specification, Style No. 13

REUTER ELECTRO-PNEUMATIC PIPE ORGAN

Two Manual and Pedal

Compass of Manuals CC to C₄, 61 Notes

Compass of Pedals CCC to G, 32 Notes

Great Organ

Open Diapason	8 ft.
Dulciana	8 ft.
Melodia	8 ft.
Gamba	8 ft.
Flute d'Amour	4 ft.

Swell Organ

Open Diapason	8 ft.
Salicional	8 ft.
Aeoline	8 ft.
Stopped Diapason	8 ft.
Vox Celeste	8 ft.
Flute Harmonic	4 ft.
Tremolo	

Pedal Organ

Bourdon	16 ft.
Lieblich Gedeckt	16 ft.

Couplers

Great Unison Off.		Swell to Great	16 ft.
Great to Great	4 ft.	Swell to Swell	4 ft.
Great to Great	16 ft.	Swell to Swell	16 ft.
Swell to Great	4 ft.	Swell Unison Off.	
Swell to Great	8 ft.	Swell to Pedal	8 ft.
Great to Pedal	8 ft.		

Adjustable Combination

Operated by Pistons under their respective Manuals.

Adjustable at Keyboard and visibly affecting Stop Keys.

Four pistons affecting Great Stops, Couplers and Pedal registers.

Four pistons affecting Swell Stops, Couplers and Pedal registers.

Accessories

Balanced Swell Pedal.

Balanced Crescendo Pedal.

Great to Pedal Reversible.

Crescendo Indicator.

Organist's Bench.

A Centrifugal Electric Blower and Generator Outfit.



North Presbyterian Church

ST. LOUIS, MISSOURI

HARRY BISHOP BARTHOLOMEW

718 Fine Arts Building
Chicago, Illinois.

August 30, 1919.

The Reuter Organ Co.,
Lawrence, Kansas.

Dear Sirs:

I want to take this opportunity of congratulating you on the three very fine organs installed by your company, which I played on my recent visit to St. Louis.

I have never played on an organ with such possibilities, and will be very glad to recommend it in highest terms to any church or organization contemplating the installation of a Pipe Organ.

Yours very truly,

(Signed) H. B. BARTHOLOMEW.

"Reuter" organs embody artistic voicing, finest workmanship and lasting service.

Specification, Style No. 15

REUTER ELECTRO-PNEUMATIC PIPE ORGAN

Two Manual and Pedal

Compass of Manuals CC to C₄, 61 Notes

Compass of Pedals CCC to G, 32 Notes

Great Organ

Open Diapason	8 ft.
Dulciana	8 ft.
Melodia	8 ft.
Gamba	8 ft.
Flute d'Amour	4 ft.

Swell Organ

Open Diapason	8 ft.
Salicional	8 ft.
Aeoline	8 ft.
Stopped Diapason	8 ft.
Vox Celeste	8 ft.
Flute Harmonic	4 ft.
Oboe	8 ft.
Tremolo	

Pedal Organ

Bourdon	16 ft.
Lieblich Gedeckt	16 ft.
Flute	8 ft.

Couplers

Great Unison Off.		Swell to Great	16 ft.
Great to Great	4 ft.	Swell to Swell	4 ft.
Great to Great	16 ft.	Swell to Swell	16 ft.
Swell to Great	4 ft.	Swell Unison Off.	
Swell to Great	8 ft.	Swell to Pedal	8 ft.
Great to Pedal	8 ft.		

Adjustable Combinations

Operated by Pistons under their respective Manuals.

Adjustable at Keyboard and visibly affecting Stop Keys.

Six Pistons affecting Great Stops, Couplers and Pedal registers.

Six Pistons affecting Swell Stops, Couplers and Pedal registers.

Accessories

Balanced Swell Pedal.

Balanced Crescendo Pedal.

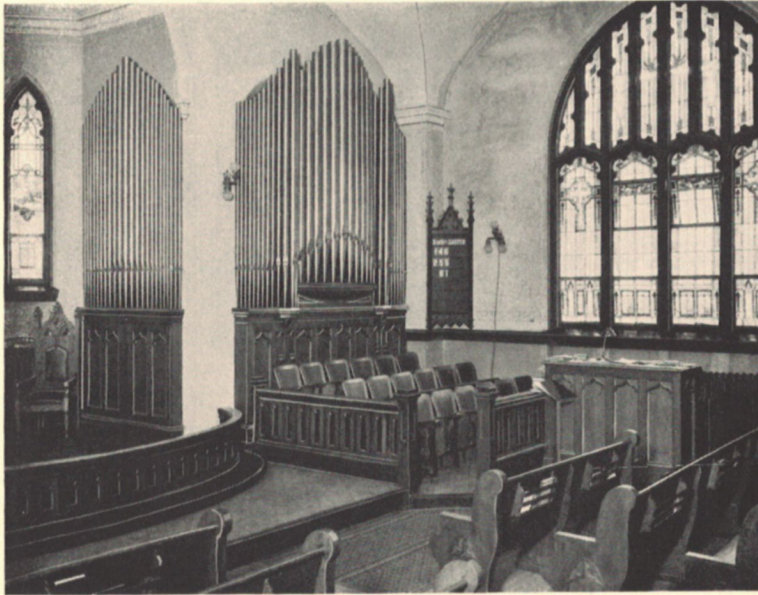
Great to Pedal Reversible.

Crescendo Indicator.

Organist's Bench.

A Centrifugal Electric Blower and Generator Outfit.

Detached Console if desired.



Swedish Evangelical Lutheran Church

KANSAS CITY, KANSAS

Kansas City, Kansas,
May 18, 1921.

To a Prospective Purchaser.

Dear Sir:

We have used a Reuter Pipe Organ in our church the last two years; during this time I have not heard one word of dissatisfaction concerning the organ.

We have had the best organists of Kansas City to give concerts on the organ and every one of them without an exception have given the organ the highest words of praise. We would have no other organ than the one we have. No one can make a mistake on getting a Reuter Organ. Too much praise cannot be given it, judging from the experience we have enjoyed.

I do not hesitate one moment in giving to this company the very highest and most commendable testimony. Any church or organization wishing satisfaction and good results from a musical and mechanical standpoint should get a Reuter Organ.

In all sincerity and honesty.

Very sincerely yours,

(Signed)

REV. C. S. ODELL, *Pastor.*

Specification, Style No. 17

REUTER ELECTRO-PNEUMATIC PIPE ORGAN

Two Manuals and Pedal

Compass of Manuals CC to C₄, 61 Notes

Compass of Pedals CCC to G, 32 Notes

Great Organ

Open Diapason	8 ft.
Dulciana	8 ft.
Melodia	8 ft.
Doppel Flute	8 ft.
Gamba	8 ft.
Flute d'Amour	4 ft.

Swell Organ

Bourdon	16 ft.
Open Diapason	8 ft.
Salicional	8 ft.
Aeoline	8 ft.
Stopped Diapason	8 ft.
Vox Celeste	8 ft.
Flute Harmonic	4 ft.
Oboe	8 ft.
Tremolo	

Pedal Organ

Bourdon	16 ft.
Lieblich Gedeckt	16 ft.
Flute	8 ft.

Couplers

Great Unison Off.		Swell to Great	16 ft.
Great to Great	4 ft.	Swell to Swell	4 ft.
Great to Great	16 ft.	Swell to Swell	16 ft.
Swell to Great	4 ft.	Swell Unison Off.	
Swell to Great	8 ft.	Swell to Pedal	8 ft.
Great to Pedal	8 ft.		

Adjustable Combinations

Operated by Pistons under their respective Manuals.

Adjustable at Keyboard and visibly affecting Stop Keys.

Six Pistons affecting Great Stops, Couplers and Pedal registers.

Six Pistons affecting Swell Stops, Couplers and Pedal registers.

Accessories

Balanced Swell Pedal.

Balanced Crescendo Pedal.

Great to Pedal Reversible.

Crescendo Indicator.

Organist's Bench.

A Centrifugal Electric Blower and Generator Outfit.

Detached Console if desired.



First Presbyterian Church

CONCORDIA, KANSAS

Letter of Introduction to Organ Prospect.

My Dear Friend:

This will introduce to you Mr. A. G. Sabol, of the Reuter Organ Company, who gave us such a wonderful organ and from start to finish was so honorable and fair and gracious about it all that we would not hesitate to submit our case to them a thousand times if we were to put in as many organs.

In this mercenary age it is a great joy to have dealings with a firm which cares more for the artistic result than for the financial and more to please you than themselves.

Our organ has meant so much, not only to us but to our town, that we wonder how we ever got along without it.

With all good will.

Sincerely,

(Signed)

D. IRA LAMBERT, *Pastor.*

Specification, Style No. 19

REUTER ELECTRO-PNEUMATIC PIPE ORGAN

Two Manuals and Pedal

Compass of Manuals CC to C₄, 61 Notes

Compass of Pedals CCC to G, 32 Notes

Great Organ

Open Diapason	8 ft.
Dulciana	8 ft.
Melodia	8 ft.
Dopple Flute	8 ft.
Gamba	8 ft.
Flute d'Amour	4 ft.

Swell Organ

Bourdon	16 ft.
Open Diapason	8 ft.
Salicional	8 ft.
Aeoline	8 ft.
Stopped Diapason	8 ft.
Vox Celeste	8 ft.
Flute Harmonic	4 ft.
Vox Humana	8 ft.
Oboe	8 ft.
Tremolo	

Pedal Organ

Bourdon	16 ft.
Lieblich Gedeckt	16 ft.
Flute	8 ft.
Violoncello	8 ft.

Couplers

Great Unison Off.		Swell to Great	16 ft.
Great to Great	4 ft.	Swell to Swell	4 ft.
Great to Great	16 ft.	Swell to Swell	16 ft.
Swell to Great	4 ft.	Swell Unison Off.	
Swell to Great	8 ft.	Swell to Pedal	8 ft.
Great to Pedal			8 ft.

Adjustable Combinations

Operated by Pistons under their respective Manuals.

Adjustable at Keyboard and visibly affecting Stop Keys.

Six Pistons affecting Great Stops, Couplers and Pedal registers.

Six Pistons affecting Swell Stops, Couplers and Pedal registers.

Six Master Pistons affecting the entire organ.

Accessories

Balanced Swell Pedal.

Balanced Crescendo Pedal.

Great to Pedal Reversible.

Crescendo Indicator.

Organist's Bench.

A Centrifugal Electric Blower and Generator Outfit.

Detached console if desired.



First Presbyterian Church

HUMBOLDT, KANSAS

Humboldt, Kansas,
August 21, 1922.

The Reuter Organ Company,
Lawrence, Kansas.

Gentlemen:

When we determined to install a pipe organ at the Presbyterian Church of this city, we looked the field over thoroughly and finally decided upon your organ. It has been installed about two and a half years and has given the best of satisfaction. It is always ready and has never been out of condition. The tone is excellent and we are well pleased with the same. I can cheerfully recommend the Reuter Organ to anyone desiring to purchase a high grade instrument.

Yours very truly,

(Signed) L. T. CANNON,
Chairman of Music Committee.

Specification, Style No. 21

REUTER ELECTRO-PNEUMATIC PIPE ORGAN

Two Manuals and Pedal

Compass of Manuals CC to C₄, 51 Notes

Compass of Pedals CCC to G, 32 Notes

Great Organ

Open Diapason	8 ft.
Dulciana	8 ft.
Gemshorn	8 ft.
Melodia	8 ft.
Doppel Flute	8 ft.
Gamba	8 ft.
Flute d'Amour	4 ft.

Swell Organ

Bourdon	16 ft.
Open Diapason	8 ft.
Salicional	8 ft.
Aeoline	8 ft.
Stopped Diapason	8 ft.
Vox Celeste	8 ft.
Flute Harmonic	4 ft.
Vox Humana	8 ft.
Oboe	8 ft.
Tremolo	

Pedal Organ

Open Diapason	16 ft.
Bourdon	16 ft.
Lieblich Gedeckt	16 ft.
Flute	8 ft.
Violoncello	8 ft.

Couplers

Great Unison Off.		Swell to Great	16 ft.
Great to Great	4 ft.	Swell to Swell	4 ft.
Great to Great	16 ft.	Swell to Swell	16 ft.
Swell to Great	4 ft.	Swell Unison Off.	
Swell to Great	8 ft.	Swell to Pedal	8 ft.
Great to Pedal			8 ft.

Adjustable Combinations

Operated by Pistons under their respective Manuals.
Adjustable at Keyboard and visibly affecting Stop Keys.

Six Pistons affecting Great stops, Couplers and Pedal registers.
Six Pistons affecting Swell stops, Couplers and Pedal registers.
Six Master Pistons affecting the entire organ.

Accessories

Balanced Swell Pedal.
Balanced Crescendo Pedal.
Great to Pedal Reversible.
Crescendo Indicator.
Organist's Bench.
A Centrifugal Electric Blower and Generator Outfit.
Detached Console if desired.



First Methodist Church

WINTERSET, IOWA

CLARENCY EDDY

3970 Ellis Ave.
Chicago, Ill.

February 19, 1922.

Reuter Organ Co.,
Lawrence, Kansas.

Gentlemen:

I was exceptionally well pleased with your organ in the First Methodist Church, Winterset, Iowa, for although it is not a large one, it is very remarkably well voiced and effective.

I have a call now to open a three manual and Echo organ in a new church at Wichita Falls, Texas, about the middle of March and perhaps the Baptist people of Lawrence will be ready for me at that time, then I will have the pleasure of presiding at one of your large three manuals.

I remain,

Yours sincerely,

(Signed) CLARENCE EDDY.

In buying a "Reuter" you get the one instrument on which the foremost organists have voiced their entire satisfaction.

Specification, Style No. 23

REUTER ELECTRO-PNEUMATIC PIPE ORGAN

Two Manuals and Pedal

Compass of Manuals CC to C₄, 61 Notes

Compass of Pedals CCC to G, 32 Notes

Great Organ

Open Diapason	8 ft.
Dulciana	8 ft.
Gemshorn	8 ft.
Melodia	8 ft.
Doppel Flute	8 ft.
Gamba	8 ft.
Flute d'Amour	4 ft.
Clarinet	8 ft.

Swell Organ

Bourdon	16 ft.
Open Diapason	8 ft.
Salicional	8 ft.
Acoline	8 ft.
Stopped Diapason	8 ft.
Vox Celeste	8 ft.
Flute Harmonic	4 ft.
Vox Humana	8 ft.
Oboe	8 ft.
Cornopean	8 ft.
Tremolo	

Pedal Organ

Bourdon	16 ft.
Open Diapason	16 ft.
Lieblich Gedeckt	16 ft.
Flute	8 ft.
Violoncello	8 ft.

Couplers

Great Unison Off.		Swell to Great	16 ft.
Great to Great	4 ft.	Swell to Swell	4 ft.
Great to Great	16 ft.	Swell to Swell	16 ft.
Swell to Great	4 ft.	Swell Unison Off.	
Swell to Great	8 ft.	Swell to Pedal	8 ft.
Great to Pedal	8 ft.		

Adjustable Combinations

Operated by Pistons under their respective Manuals.

Adjustable at Keyboard and visibly affecting Stop Keys.

Six Pistons affecting Great Stops, Couplers and Pedal registers.

Six Pistons affecting Swell Stops, Couplers and Pedal registers.

Six Master Pistons affecting the entire organ.

Six Universal Tce Pistons controlling entire organ.

Accessories

Balanced Swell Pedal.

Balanced Crescendo Pedal.

Great to Pedal Reversible.

Crescendo Indicator.

Organist's Bench.

A Centrifugal Electric Blower and Generator Outfit.

Detached Console if desired.



First Presbyterian Church

JUNCTION CITY, KANSAS

August 29, 1922.

Reuter Organ Company,
Lawrence, Kansas.

Gentlemen:

After playing the organ installed by you for nearly a year now, I wish to tell you that each week I find it more and more satisfactory and enjoyable.

It is so rich in variety of tone, and the large number of soft combinations obtainable makes it especially interesting and pleasing.

I have never played on an organ with so perfect an action as the Reuter.

We also wish to express to you our great appreciation of the most courteous business relations your company have accorded us in all matters, as well as the constant care you have given the organ.

Very sincerely yours,

(Signed) ABBIE R. MOSES, Organist.

Specification, Style No. 26

REUTER ELECTRO-PNEUMATIC PIPE ORGAN

Three Manual and Pedal

Compass of Manuals CC to C₄, 61 Notes

Compass of Pedals CCC to G, 32 Notes

Great Organ

Open Diapason	8 ft.
Dopple Flute	8 ft.
Viol d'Gamba	8 ft.
Gemshorn	8 ft.
Flute d'Amour	4 ft.
Harmonic Tuba	8 ft.

Choir Organ

Viola Diapason	8 ft.
Melodia	8 ft.
Dulciana	8 ft.
Unda Maris	8 ft.
Flute Harmonic	4 ft.
Clarinet	8 ft.
Tremolo	

Swell Organ

Bourdon	16 ft.
Open Diapason	8 ft.
Stopped Diapason	8 ft.
Viol d'Orchestra	8 ft.
Viole Celeste	8 ft.
Aeoline	8 ft.
Flute Traverso	4 ft.
Oboe	8 ft.
Vox Humana	8 ft.
Tremolo	

Pedal Organ

Open Diapason	16 ft.
Bourdon	16 ft.
Lieblich Gedeckt	16 ft.
Flute	8 ft.

Couplers

Great Unison Off.		Choir to Great	8 ft.	Swell to Choir	16 ft.
Great to Great	4 ft.	Choir to Great	16 ft.	Choir Unison Off.	
Great to Great	16 ft.	Swell to Swell	4 ft.	Choir to Choir	4 ft.
Swell to Great	4 ft.	Swell to Swell	16 ft.	Choir to Choir	16 ft.
Swell to Great	8 ft.	Swell Unison Off.		Great to Pedal	8 ft.
Swell to Great	16 ft.	Swell to Choir	4 ft.	Swell to Pedal	8 ft.
Choir to Great	4 ft.	Swell to Choir	8 ft.	Choir to Pedal	8 ft.

Adjustable Combination

Operated by Pistons under their respective Manuals

Adjustable at Keyboard and visibly affecting Stop Keys

Six Pistons affecting Great Stops, Couplers and Pedal registers

Six Pistons affecting Swell Stops, Couplers and Pedal registers

Six Pistons affecting Choir Stops, Couplers and Pedal registers

Six Master Pistons affecting the entire organ

Pedal Movements

Balanced Expression to Swell Division

Balanced Expression to Choir Division

Balanced Crescendo and Diminuendo Pedal

Toe Pistons

Great to Pedal Reversible
Swell to Pedal Reversible
Choir to Pedal Reversible
Sforzando Pedal

Accessories

Crescendo Indicator
Sforzando Indicator
Organ Bench with Music compartment
Electric Blower and Generator
Console detached if desired



United Congregational Church

WICHITA, KANSAS

Wichita, Kansas,
October 23, 1922.

The Reuter Organ Company,
Lawrence, Kansas.

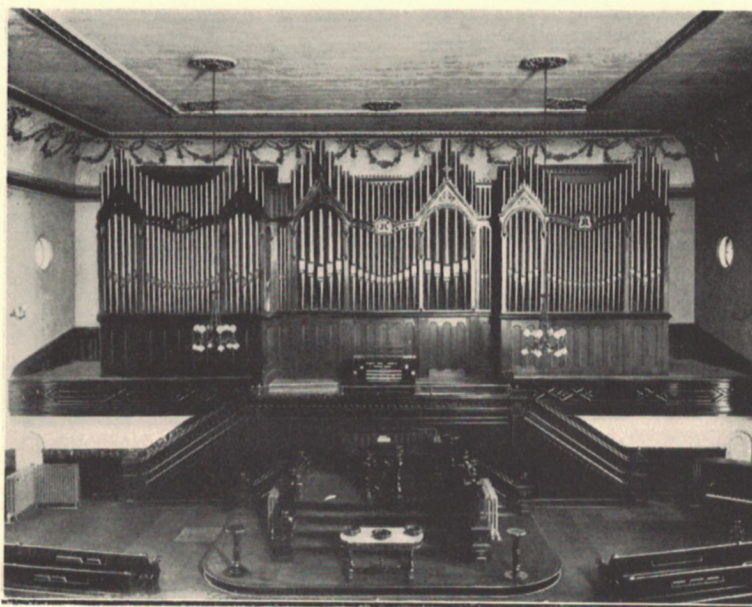
Gentlemen:

We are greatly pleased with the wonderful organ which you have installed in our new church. Everyone is delighted with it. You are at liberty to use my name and to refer those interested to me.

Yours truly,

(Signed) H. C. HERRING, *Pastor.*

REUTER SUPERIORITY IS GAINING
BY LEAPS AND BOUNDS



Marvin Memorial Organ, Plymouth Congregational Church
LAWRENCE, KANSAS

REUTER ELECTRO-PNEUMATIC PIPE ORGAN

Four Manual and Pedal

Echo Playable from Solo Manual
Compass of Manuals CC to C₄, 61 Notes
Compass of Pedals CCC to G, 32 Notes

<i>Great Organ</i>		<i>Choir Organ</i>	
Bourdon	16 ft.	Diapason	8 ft.
First Diapason	8 ft.	Concert Flute	8 ft.
Second Diapason	8 ft.	Dulciana	8 ft.
Clarabella	8 ft.	Unda Maris	8 ft.
Erzahler	8 ft.	Flute d'Amour	4 ft.
Octave	4 ft.	English Horn	8 ft.
Harmonic Flute	4 ft.	Clarinet	8 ft.
Tuba	8 ft.	Tremolo	
Chimes (From Echo)			
Tremolo			
<i>Echo Organ</i>		<i>Solo Organ</i>	
Flute Celeste	8 ft.	Gross Floete	8 ft.
Vox Humana	8 ft.	Gross Gamba	8 ft.
Chimes	20 notes	Gamba Celeste	8 ft.
All Solo couplers affecting same		French Horn	8 ft.
		Tuba Mirabilis	8 ft.
		Tremolo	

(Continued on Next Page)

Swell Organ

Bourdon	16 ft.	Flute	8 ft.
Diapason	8 ft.	Dolce Cornet	3 rks.
Stopped Diapason	8 ft.	Cornopean	8 ft.
Vox Celeste	8 ft.	Oboe	8 ft.
Salicional	8 ft.	Vox Humana	8 ft.
Aeoline	8 ft.	Tremolo	

Pedal Organ

(Augmented)

Resultant	32 ft.
Diapason	16 ft.
Bourdon	16 ft.
Echo Bourdon	16 ft.
Ophicleide	16 ft.
Tuba	8 ft.
Major Flute	8 ft.
Dolce Flute	8 ft.

Couplers

Great Unison Off.		Solo to Great	4 ft.	Swell to Choir	8 ft.
Great to Great	4 ft.	Solo to Great	8 ft.	Swell to Choir	16 ft.
Great to Great	16 ft.	Solo to Great	16 ft.	Solo Unison Off.	
Swell to Great	4 ft.	Swell Unison Off.		Solo to Solo	4 ft.
Swell to Great	8 ft.	Swell to Swell	4 ft.	Solo to Solo	16 ft.
Swell to Great	16 ft.	Swell to Swell	16 ft.	Great to Pedal	8 ft.
Choir to Great	4 ft.	Choir Unison Off.		Swell to Pedal	8 ft.
Choir to Great	8 ft.	Choir to Choir	4 ft.	Choir to Pedal	8 ft.
Choir to Great	16 ft.	Choir to Choir	16 ft.	Solo to Pedal	8 ft.
		Swell to Choir	4 ft.		

Adjustable Combinations

Operated by Pistons under their respective Manuals
Adjustable at Keyboard and visibly affecting Stop Keys

Six Pistons affecting Great Stops, Couplers and Pedal Registers
Six Pistons affecting Swell Stops, Couplers and Pedal Registers
Six Pistons affecting Choir Stops, Couplers and Pedal Registers
Six Pistons affecting Solo Stops, Couplers and Pedal Registers
Four Pistons affecting Echo Stops, Couplers and Pedal Registers
Six Universal Toe Pistons controlling entire organ

Pedal Movements

Balanced Expression to Swell Division
Balanced Expression to Choir Division
Balanced Expression to Solo and Echo Division
Balanced Crescendo Pedal
All Expression Pedals to Swell Pedal

Toe Pistons

Great to Pedal Reversible
Swell to Pedal Reversible
Solo to Pedal Reversible
Sforzando Pedal

Accessories

Crescendo Indicator
Sforzando Indicator
Organist's Bench
A Centrifugal Electric Blower and
Generator Outfit
Detached Console placed to suit
Purchaser



First Baptist Church

LAWRENCE, KANSAS

Lawrence, Kansas,
September 29, 1921.

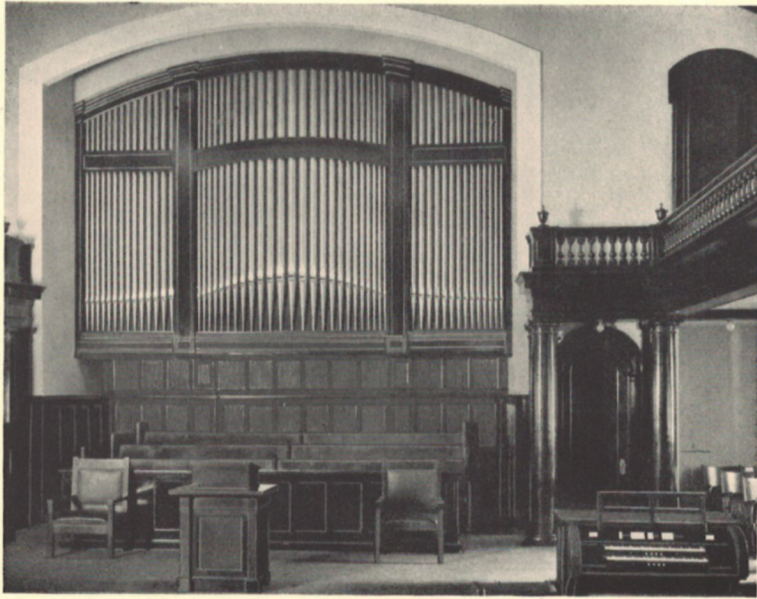
TO WHOM IT MAY CONCERN:

The Reuter Organ Co. of this city installed one of their organs in our church last winter and I am glad to speak of the satisfaction and services we have enjoyed from the use of this instrument. It is a three manual, 25 stop organ. It has beautiful tone and a range of combinations which makes possible the softest and most delicate tones to the greatest grandeur of power. We are exceedingly pleased and can recommend the instrument which this company makes for the consideration of any one planning to purchase an organ.

Sincerely,

(Signed) FRANK JENNINGS, *Pastor.*

We have always believed that quality is more important than quantity in products of this character.



Bales Baptist Temple

KANSAS CITY, MISSOURI

Kansas City, Mo.,
March 2, 1922.

The Reuter Organ Co.,
Lawrence, Kansas.

Gentlemen :

Your organ has given such splendid satisfaction in the Bales Baptist Temple that I shall be glad, at any time, to have you refer any church in the country to me. I will be glad to give any inquiry my personal attention and to say that of all organs I have had experience with I like yours very much the best.

Yours very cordially,

(Signed)

O. P. BISHOP, *Pastor.*

"Reuter" organs are a product of merit.



Christ Church Cathedral Chapel

ST. LOUIS, MISSOURI

ARTHUR DAVIS

Concert Organist
St. Louis, Mo.

The Reuter Organ Co.,
Lawrence, Kansas.

May 6, 1920.

Dear Sirs:

I have just returned from Vincennes, Indiana, after having given the opening recital on the magnificent pipe organ recently installed by your firm in the First M. E. Church. The recital, given before fifteen hundred people, was a huge success; and I feel in duty bound to congratulate your firm most highly on maintaining that extremely high standard of workmanship, so closely associated with the reputation of the Reuter Organ Co. The tonal scheme, artistic voicing, and ensemble result, together with the wonderful achievement of your responsive electric action, places your firm on a very high pedestal, so richly deserved by your corps of artists. Your position as organ builders of the highest grade of instrument is assured, and I sincerely wish you all future success.

Believe me.

Very Sincerely yours,
(Signed) ARTHUR DAVIS,
*Organist Christ Church Cathedral,
St. Louis, Missouri.*



First Methodist Episcopal Church

VINCENNES, INDIANA

April 19, 1920.

The Reuter Organ Co.,
Lawrence, Kansas.

Dear Sirs:

I am very happy indeed to answer inquiry concerning the Reuter Organ. The action and tone is superb, it responds immediately. It would seem to us the action is as near perfect as mechanism gets. This judgment is confirmed by a dozen organists at least who have come to try our organ.

In tone there is nothing superior and I do not know where to go to find its equal. It was largely the tonal quality of your instruments that satisfied us.

We early determined to deal only with the best organ builders, that brought us to examine only the best of instruments. I do not hesitate to say we found nothing that suited us in tone and workmanship as well as the Reuter Organ.

It has made friends from the start. Our audiences are from fifty to one hundred per cent larger with it, and the pastor does not hesitate to say, "The Organ is doing it." The greatest friends of the organ are those that see and hear it most.

Very cordially,

(Signed) L. C. BENTLEY, *Pastor.*

References

- Mr. Daniel A. Hirschler, Mus. Bac., A. A. G. O., Concert Organist, Dean of Music, The College of Emporia, Kansas; Organist and Choir Director, First Congregational Church, Emporia, Kansas.
- Mr. Arthur Davis, F. A. G. O., F. R. C. O., Concert Organist, Organist and Choir Master, Christ Church Cathedral, St. Louis, Missouri.
- Mr. Powell Weaver, Organist, Grand Avenue Temple, Kansas City, Missouri.
- Mr. Henry V. Stearns, Mus. Bac., F. A. G. O., Dean of Music, Washburn College, Topeka, Kansas.
- Prof. Karl Haase, F. A. G. O., Dean of Music, Lutheran Seminary, Seward, Neb.
- Mr. Harold L. Butler, Dean School of Fine Arts, Kansas State University, Lawrence, Kansas.
- Mr. Walter French, Director Ivanhoe Masonic Band, Kansas City, Missouri.
- Mr. Elmer H. F. Ruhe, Secretary Missouri State Council N. A. O., Organist, St. James Evangelical Church, St. Louis, Mo.
- Mr. F. V. P. Hilligardt, Director Alhambra Grotto Choral Club, Organist, St. John's Evangelical Church, St. Louis, Missouri.
- Mr. Chas. S. Skilton, F. A. G. O., Director of Organ Department, Kansas State University, Lawrence, Kansas.
- Mr. Carl A. Preyer, Associate Dean, School of Fine Arts, Kansas State University, Lawrence, Kansas.
- Mr. Matthew N. Lundquist, Ph. D., Dean School of Music, Gustavus Adolphus College, St. Peter, Minnesota.
- Mr. Arthur H. Mills, Musical Director, Independence, Missouri.
- Mr. William Allen White, Editor Emporia Gazette, Emporia, Kansas.
- Rev. Frank C. Rideout, Chaplain United States Army Post, Ft. Leavenworth, Kansas.
- Rev. Adolph H. Poppe, First Lutheran Church, Little Rock, Arkansas.
- Rev. Harry E. Crane, First Methodist Episcopal Church, Caney, Kansas.
- Rev. Elbert E. Satterlee, First M. E. Church, Humboldt, Kansas.
- Mr. John B. Russell, Oil Interests, Lawrence, Kansas.
- Mr. Wm. Bromelsick, President Peoples State Bank, Lawrence, Kansas.
- Prof. F. O. Reuter, Dr. Martin Luther College, New Ulm, Minnesota.

Testimonials

The following pages contain a few unsolicited letters of commendation received by us. Read them. They contain interesting testimony and advice.

THE EMPORIA GAZETTE
Emporia, Kansas.

November 2, 1922.

Reuter Organ Company,
Lawrence, Kansas.

Gentlemen:

Your large three manual organ, which you installed in the First Congregational Church of Emporia, is a beautiful instrument, wonderfully toned and mechanically perfect. As chairman of the organ committee, I know that I voice the opinion of the entire congregation when I say that I feel you have given us a splendid organ and we are delighted with our purchase.

Sincerely yours,

(Signed) WILLIAM ALLEN WHITE.

Chairman Organ Comm.

Reuter Organ Co.,
Lawrence, Kansas.

Gentlemen:

The Reuter Organ built for Salem Lutheran Church at Owosso, Michigan, has aroused the enthusiasm not only of the congregation, but especially of every organist far and near who has tried the beautiful instrument. The "Reuter" organ can surely compete with any high-grade organ of the country. Mechanism, finish and design is perfect. Materials are well selected. Construction is solid. But that skillful artistic voicing of the "Reuter" organ surely cannot be surpassed. Your organ erector, Mr. Ernest Vogelpohl, has done excellent work and deserves great praise.

Get a "Reuter" organ is my future advice to every congregation.

Yours respectfully,

(Signed) WM. J. RUDOW,

Teacher and Organist.

7646 W. 66th Street,
Argo, Illinois.

Emporia, Kansas,

October 1, 1922.

To Whom It May Concern:

The Reuter Organ placed in St. Mark's Lutheran Church, of this city two years ago, has given perfect satisfaction both tonally and mechanically.

We have found The Reuter Organ Company fine people to deal with.

This statement is sincerely and cheerfully given and I heartily recommend their goods.

(Signed) JOHN J. CLEMENS, *Pastor.*

EVANGELICAL LUTHERAN SYNOD OF KANSAS

333 Tyler Street,

Topeka, Kansas.

November 22, 1920.

The Reuter Organ Co.,

Lawrence, Kansas.

Dear Sirs:

Permit me to express my great pleasure over the installation at Emporia of the elegant organ you made for St. Mark's Lutheran Church. It was my pleasure to preach the dedicatory sermon and after the dedication make a plea for raising \$900.00 needed to pay for changes in the church for receiving the instrument, etc. The people were so happy over their new organ that I raised the entire \$900.00 in twenty minutes, going over the top with a \$400.00 surplus which will be used in installing a fine lighting system for their church.

This organ is certainly sweet in tone, ample in power, beautiful in design and complete in system of couplers, combinations and accessories. Its Centrifugal Electric Blower and Generating Outfit just topped it off to perfection. I wish to thank you for persuading them to order such a superb instrument. Any time I can be of any service to you kindly command me.

Cordially yours,

(Signed) H. A. OTT, *Missionary Superintendent.*

INDEPENDENCE BOULEVARD CHRISTIAN CHURCH

Kansas City, Mo.,

March 8, 1922.

The Reuter Organ Company,
Lawrence, Kansas.

Gentlemen:

Up to date I have played organ recitals on many of your instruments. It is a pleasure for me to write to you and express my appreciation of your company's courteous attention to detail. I have found all of your organs voiced exceptionally fine and the mechanical construction of the Reuter Organs shows clean workmanship.

Wishing you much success, I am

Yours,

(Signed) H. C. FEIL, *Organist.*

Springfield, Minnesota.

December 16, 1921.

The Reuter Organ Co.,
Lawrence, Kansas.

Gentlemen:

The two manual, Electro-Pneumatic pipe organ installed some time ago by you in St. Raphael's Church of this city, is giving the best of satisfaction. The tonal quality, especially, is most excellent; the electric action is positive and absolutely prompt in response. The exterior finish and appearance is beautiful in every respect. In this connection, will also mention that the service and treatment accorded me both by the Company and by the representative was most pleasant. The work of the installation was done by most competent men, and the deal throughout leaves but a pleasant memory of most satisfactory business relations.

Since its installation, several very prominent organists have played on the organ and were charmed with its excellence.

I therefore have no hesitancy in most cheerfully recommending the Reuter Organ to any church or other organization that may be contemplating the purchase of A HIGH GRADE PIPE ORGAN.

Sincerely yours,

THE DONOR OF THE ORGAN.

(Name will be furnished in confidence upon request.)

THE LUTHERAN TEACHERS SEMINARY

Seward, Nebraska.

August 11, 1920.

The Reuter Organ Company,
Lawrence, Kansas.

Gentlemen:

It is with extreme pleasure that I am sending to you this unsolicited letter of commendation.

In my mind there is no doubt that your organs are not surpassed in tone, workmanship, simplicity of construction in every detail and general workmanship by any organ built today.

What impressed me mostly after I had thoroughly examined your large and well equipped plant was the simple Electro-Pneumatic action. No buyer of your organs need to fear serious troubles in the action. This together with the beautiful and characteristic voicing should secure your firm a splendid future.

I shall gladly recommend your organs whenever opportunity offers.

Yours cordially,

(Signed) KARL HAASE, F. A. G. O.,
Instructor of Organ.

"THE BULLETIN"

CENTRAL CONGREGATIONAL CHURCH

Topeka, Kansas.

Our New Organ:

A word of appreciation is due the Reuter Organ Company for the splendid organ with which they have provided Central Church. The wonderful recital rendered by Dean Stearns is ample proof the organ will do all that the company has promised for it. After these many months of waiting we feel that we can justly congratulate ourselves because of this addition to the inspiration of our services.

CENTRAL CHURCH.

ROYAL THEATRE
Little Rock, Arkansas

The Reuter Organ Company,
Lawrence, Kansas.

May 28, 1921.

Gentlemen:

The writer takes pleasure in recommending the Reuter to anyone wanting a Theatre Organ.

We have had ours installed since last December 23rd, during which time same has not given us a minute's trouble and we use it SEVEN HOURS DAILY.

The action and contact is the best I have ever seen. Contact is not "ALMOST," but INSTANTANEOUS.

We use our organ with the orchestra right along while in most cases an orchestra has a hard time following an organ, in our case they play with the organ the same as they would with a piano, AS THE ACTION IS RIGHT NOW.

We have had experience with quite a number of makes but the Reuter Organ has it on all of them.

Yours truly,

(Signed) SAUL S. HARRIS,
General Manager.

CHURCH OF CHRIST
Mason City, Iowa

April 30, 1919.

The Reuter Organ Co.,
Lawrence, Kansas.

Gentlemen:

We are more than pleased with action and tone, in fact everything about the organ.

It has been attracting a very great deal of attention in our city and is an instrument that is much admired by the musicians of our city.

I have taken much pleasure in answering some inquiries about the organ and we are so much satisfied with it that we are hoping you are receiving great numbers of orders.

Wishing you every good in your work, I am

Cordially yours,

(Signed) W. T. FISHER, *Pastor.*

ST. JOHN'S CHURCH

Lawrence, Kansas

The Reuter Organ Company,
Lawrence, Kansas.

Gentlemen:

It affords me great pleasure to express to you my sincere appreciation of the wonderful organ you have placed in St. John's Catholic Church of this city.

It is not only a work of art in its tonal qualities but also embodies wonderful science in electrical and mechanical engineering, and without a question in my mind is an instrument without a superior for its size. I highly recommend your work wherever quality and service is required.

Wishing you unlimited success in your great and noble enterprise.

Respectfully yours,

(Signed) REV. H. FITZGERALD.

CENTRAL CONGREGATIONAL CHURCH

Topeka, Kansas

January 30, 1922.

Reuter Organ Company,
Lawrence, Kansas.

Gentlemen:

Your bill with your good letter 23rd to Central Congregational Church has been handed me for attention. I am placing an O. K. on the bill and asking the Financial Secretary to make voucher at once.

We appreciate not only your kind remarks but your courteous treatment in all this matter.

If there is anything our trustees or any of our people can do to help you get business in this locality please command us.

Yours very truly,

(Signed) D. O. COE,
Chairman of Finance Committee.

FIRST PRESBYTERIAN CHURCH

Normal, Illinois

January 20, 1920.

The Reuter Organ Co.,

Lawrence, Kansas.

Gentlemen:

A short time since the Reuter Organ Company installed one of their Electro-Pneumatic pipe organs in the First Presbyterian Church of Normal, Illinois.

We have found it very satisfactory in every way, the touch is light, the response instantaneous; the tones pure and mellow. The volume is ample for the building.

The finish and appearance equal to our expectation; our business relations pleasant. We would be pleased to recommend them to the consideration of anyone needing something in their line.

Yours very truly,

(Signed) T. W. BROWN,
Chairman of Committee.

THE UNIVERSITY OF KANSAS

SCHOOL OF FINE ARTS

Lawrence, Kansas

April 8, 1920.

The Reuter Organ Co.,

Lawrence, Kansas.

Gentlemen:

The pipe organ which you installed in the Masonic Temple in Lawrence a year ago has been a delight and inspiration to all who have had an opportunity of playing it.

The voicing is excellent, the action prompt and responsive and the facility with which the registration can be manipulated is superior to any other make.

We have not had any trouble or expense with the organ since it has been installed. I wish to congratulate you upon making such a splendid instrument.

I am cordially yours,

(Signed) CARL A. PREYER.

GUSTAVUS ADOLPHUS COLLEGE

St. Peter, Minnesota

December 23, 1921.

The Reuter Organ Co.,
Lawrence, Kansas.

Gentlemen:

I want to tell you that I am very glad to have visited your home office and factory, because I know now that it is not necessary to turn to New England for a real first-class pipe organ. I am glad that one of the very best pipe organs in America can be built at Lawrence, Kansas. You have a mighty fine factory, excellent men, and excellent methods. You are in position to put out a really first-class pipe organ in every respect. I shall be glad to recommend the Reuter Organ. The mechanical part of your organ is exceptionally fine and its tonal resources are wonderful. Henceforth I am for you.

Before visiting your factory and playing your organs, I was very much in favor of New England productions. I was agreeably surprised to find that beautiful organs can be built right at Lawrence, Kansas. I shall be glad to recommend you to anybody who wants a first-class pipe organ. I have played a very large number of fine pipe organs and I can frankly and honestly state that there is nothing better than a Reuter Organ.

I wish you great success in your excellent work. Best greetings of the Season.

Yours very truly,

(Signed) MATTHEW N. LUNDQUIST, *Director.*

CHURCH OF CHRIST

Mason City, Iowa

"After Mr. Bonnet's Recital"

The Reuter Organ Co.,
Lawrence, Kansas.

Gentlemen:

Mr. Bonnet told me that he wishes to secure dates in cities where this organ had been installed so he could play on a good instrument. We had people come from a distance to hear the recital and find out what the organ would do. We feel that your company shares in the benefit of our effort and we are well pleased.

Sincerely yours,

(Signed) H. I. PRUSSIA,
Chairman of Committee.

ALBERT STROHM
Organist
ST. PAUL'S BY-THE-LAKE
Chicago, Illinois

January 10, 1922.

The Rev. Fred J. Jordan,
Marshfield, Wisconsin.

Dear Sir:

It is with a great deal of pleasure that I tell you what I know of the Reuter Organ. The best of workmanship and material goes into the organ and the result is an instrument that stands out tonally and mechanically PERFECT. It is the exquisite and characteristic voicing in Reuter Organs that give them their wonderful tone, making possible beautiful Solo effects as well as a solid and well-rounded ensemble, mechanically they are perfect of action and absolute freedom from petty troubles often met with in others. It is with a great deal of pleasure and relief that I sit down to a Reuter at St. Paul's each Sunday.

I have cheerfully answered several inquiries regarding the Reuter Organ Company, as I feel that some expression of appreciation is due these gentlemen for their high ideals and the excellence of their instrument.

Very truly yours,

(Signed) ALBERT J. STROHM.

FEDERATED CHURCH

OTTAWA, KANSAS

December 21, 1921.

The Reuter Organ Co.,
Lawrence, Kansas.

Gentlemen:

Among our great blessings we count our Reuter Organ "A thing of Beauty and a joy forever."

Last week I paid the last bill for work and material connected with installation of the organ, and we are happy in the possession of such an instrument.

Yours sincerely,

(Signed) W. A. POWELL, *Pastor.*

FIRST PRESBYTERIAN CHURCH

BAXTER SPRINGS, KANSAS

The Reuter Organ Co.,

Lawrence, Kansas.

Gentlemen:

The committee, after looking over plans and specifications of various well-known makes throughout the country, unanimously decided in favor of the Reuter Organ for four reasons.

Quality in tone and harmony, workmanship, combinations and beauty of organ soul as well as mechanical finish.

The Committee.

DR. MARTIN LUTHER COLLEGE

NEW ULM, MINNESOTA

The Reuter Organ Co.,

Lawrence, Kansas.

Dear Sirs:

It is an act of necessity on my part to inform you of the following, after having thoroughly inspected your large plant and after having examined and played several completed organs:

Material and workmanship, in all details of organ building, even unto the artistically beautiful intonation, the ingeniously contrived electro-pneumatic system which, combined with perfectly ready response and precisions, promises to function positively and permanently, and exactness and elegance of the exterior architectural forms and various other things, show plainly that it is your endeavor, in company with a number of efficient, expert, and competent men to turn out first class workmanship, which need not fear competition of any kind whatsoever.

For those reasons I will gladly and willingly recommend your organ firm wherever and whenever possible.

Yours truly,

(Signed) . PROF. F. O. REUTER.

REUTER ORGANS EMBODY FINEST WORKMANSHIP,
ARTISTIC VOICING AND LASTING SERVICE

LIST OF RECENT INSTALLATIONS

Episcopal

Manuals

Trinity Episcopal Church.....	Mattoon, Illinois.....	2
Memorial Episcopal Church.....	Champaign, Illinois.....	2
St. Paul's P. E. Church.....	Chicago, Illinois.....	2
St. Peter's Episcopal Church.....	Pittsburg, Kansas.....	2
Christ Church Cathedral Chapel.....	St. Louis, Missouri.....	2

Christian

Church of Christ.....	Mason City, Iowa.....	2
Kingshighway Christian Church.....	St. Louis, Missouri.....	2
First Christian Church.....	Poseyville, Indiana.....	2
First Christian Church.....	Pineville, Kentucky.....	2
Central Park Christian Church.....	Topeka, Kansas.....	2
Christian Church.....	Hiawatha, Kansas.....	2

Evangelical

St. Paul's Evangelical Church.....	Waterloo, Illinois.....	2
Evangelical Church.....	New Baden, Illinois.....	1
Mack Avenue Evangelical Church.....	Detroit, Michigan.....	2
Emanuel Evangelical Church.....	Abilene, Kansas.....	2
St. John's Evangelical Church.....	Collinsville, Illinois.....	2
St. John's Evangelical Church.....	St. Louis, Missouri.....	3

Lutheran

Bethany Lutheran Church.....	St. Louis, Missouri.....	2
Swedish Lutheran Church.....	Kansas City, Kansas.....	2
First Lutheran Church.....	Little Rock, Arkansas.....	2
St. Mark's Lutheran Church.....	Emporia, Kansas.....	2
St. John's Lutheran Church.....	Renville, Minnesota.....	2
Trinity Lutheran Church.....	Ottawa, Illinois.....	2
St. John's Lutheran Church.....	Town Helen, Minnesota.....	2
St. John's Lutheran Church.....	Rogers City, Michigan.....	2
Lutheran Church.....	Okarche, Oklahoma.....	2
Lutheran Church.....	Owosso, Michigan.....	2
Trinity Lutheran Church.....	Houston, Texas.....	2
Lutheran Teachers Seminary.....	Seward, Nebraska.....	2
Evangelical Lutheran Church.....	Bazille Mills, Nebraska.....	2
St. John's Evang. Lutheran Church.....	Elmore, Minnesota.....	2
St. Peter's Evang. Lutheran Church.....	Wesgate, Iowa.....	2
St. Paul's Evang. Lutheran Church.....	Norfolk, Nebraska.....	3
Evangelical Lutheran Zion's Church.....	Oklahoma City, Oklahoma.....	2
Evangelical Lutheran Church.....	Ceresco, Nebraska.....	2

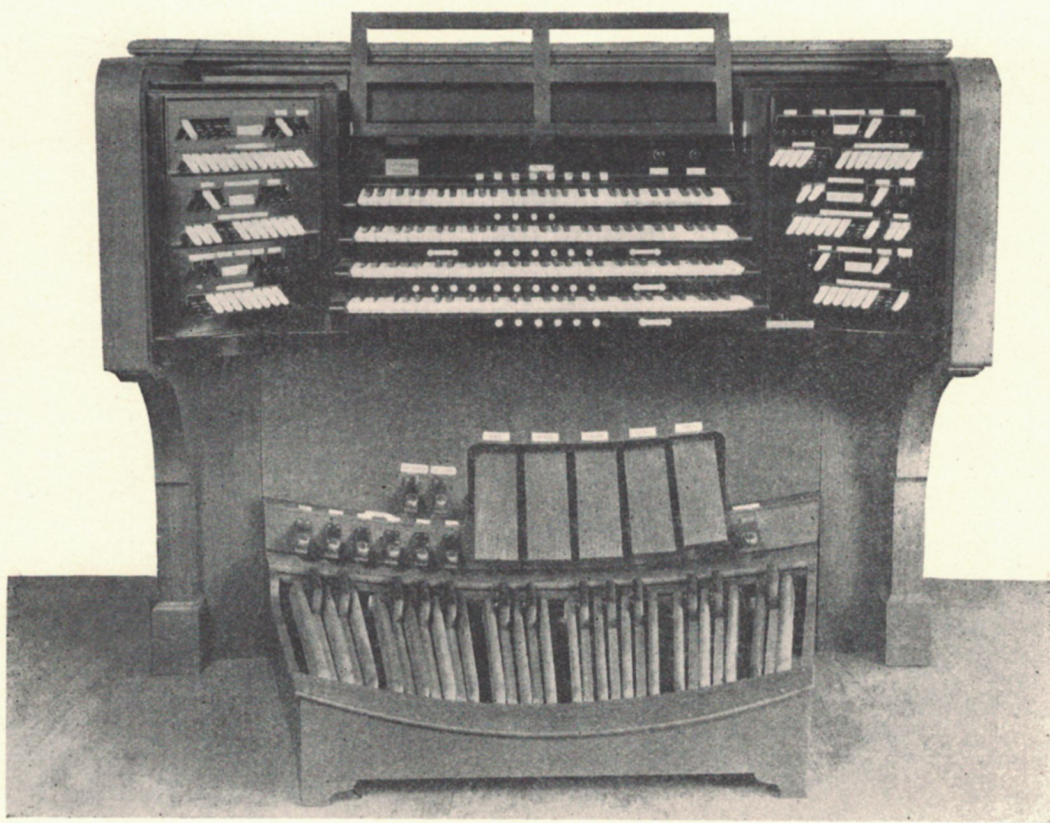
Congregational

Central Congregational Church.....	Topeka, Kansas.....	2
Congregational Church.....	Geneva, Illinois.....	2
United Congregational Church.....	Wichita, Kansas.....	2
First Congregational Church.....	Emporia, Kansas.....	3
Plymouth Congregational Church.....	Lawrence, Kansas.....	3

	<i>Methodist</i>	<i>Manuals</i>
First M. E. Church.....	Vincennes, Indiana.....	Echo & 2
First M. E. Church.....	Lindsborg, Kansas.....	2
First M. E. Church.....	Olathe, Kansas.....	2
Grace M. E. Church.....	Winfield, Kansas.....	2
Grace M. E. Church.....	Oklahoma City, Oklahoma....	2
First M. E. Church.....	Humboldt, Kansas.....	2
First Methodist Church.....	Winterset, Iowa.....	2
M. E. Church.....	Caney, Kansas.....	2
Grace M. E. Church.....	Springfield, Missouri.....	3
Methodist Church.....	Lees Summit, Missouri.....	2
Methodist Church.....	Fredonia, Kansas.....	2
	<i>Presbyterian</i>	
North Presbyterian Church.....	St. Louis, Missouri.....	2
First Presbyterian Church.....	Baxter Springs, Kansas.....	2
First Presbyterian Church.....	Normal, Illinois.....	2
First Presbyterian Church.....	Columbus, Kansas.....	2
First Presbyterian Church.....	Concordia, Kansas.....	2
First Presbyterian Church.....	Humboldt, Kansas.....	2
First Presbyterian Church.....	Junction City, Kansas.....	2
Memorial Presbyterian Church.....	Marysville, Kansas.....	2
First Presbyterian Church.....	Osage City, Kansas.....	2
United Presbyterian Church.....	Topeka, Kansas.....	2
Grandview Park Presbyterian Church.....	Kansas City, Kansas.....	2
	<i>Catholics</i>	
St. Peter & Paul's Church.....	Belle Plaine, Minnesota.....	2
St. Patrick's Catholic Church.....	Sidney, Nebraska.....	2
St. Raphael's Catholic Church.....	Springfield, Minnesota.....	2
St. Adrian's Catholic Church.....	Adrian, Minnesota.....	2
St. John's Catholic Church.....	Lawrence, Kansas.....	2
Holy Name Catholic Church.....	Rosedale, Kansas.....	2
St. Michael's Catholic Church.....	Buckmann, Minnesota.....	2
St. John's Catholic Church.....	St. Paul, Minnesota.....	2
St. Casimir's Catholic Church.....	Wells, Minnesota.....	2
	<i>Baptist</i>	
First Baptist Church.....	Brookhaven, Mississippi.....	2
First Baptist Church.....	Lawrence, Kansas.....	3
Bales Avenue Baptist Temple.....	Kansas City, Missouri.....	2
	<i>Masonic Temples</i>	
Scottish Rite Temple.....	Lawrence, Kansas.....	Echo & 2
Avondale Masonic Temple.....	Chicago, Illinois.....	2
Constellation Masonic Temple.....	Chicago, Illinois.....	2
Ivanhoe Masonic Temple.....	Kansas City, Missouri.....	2
	<i>Theatre</i>	
Hippodrome Theatre.....	Murphysboro, Illinois.....	2
New Royal Theatre.....	Little Rock, Arkansas.....	2
	<i>Miscellaneous</i>	
Federation Church.....	Ottawa, Kansas.....	2
U. S. Army Post Chapel.....	Ft. Leavenworth, Kansas.....	2
National Soldiers' Home.....	Soldiers' Home, Kansas.....	2
United Brethern Church.....	Westfield, Illinois.....	2
Kansas State University.....	Lawrence, Kansas.....	2
Christian Scientists Church.....	Emporia, Kansas.....	2
Residence of U. S. Epperson.....	Kansas City, Missouri.....	2
Swedish Mission Church.....	Sioux City, Iowa.....	2



HUGH STEPHENS PRESS, JEFFERSON CITY, MO.



Four Manual Reuter Console

THE FIRST PRESBYTERIAN CHURCH

TACOMA, WASHINGTON

CLARENCE WILLIAM WEYER, PASTOR

December 19, 1924.

Mr. Albert Watkins,
Dodge City, Kansas.

Dear Sir:

Dr. Weyer has handed me your letter with the request that I reply to it. This I am most happy to do and only regret the delay which was caused by a slight indisposition.

I have tried to go into the organ question as fully as possible, as our installation is one of considerable importance and many angles needed to be considered. Three years ago just after we had launched our building project, I went east to visit my former places of residence in Ohio and Indiana. I made this the occasion to begin gathering information on the organ question. The cities of Chicago, Cleveland, Detroit, St. Paul and Minneapolis were visited, and in each I made it a point to hear the leading organ. Among the many that I heard the Casavant (a Canadian firm) and the Skinner stood out far above the others. Several large Austins which I heard were fine, too, but not as impressive as I expected them to be. I had been strongly prejudiced in favor of the Austin, largely, I suppose, by their representative in Seattle who has had the care of our present organ for many years, and by their elaborate literature.

About the first of the year I began intensive investigations of various makes, writing to various churches and organists for advice. In this, too, Casavant and Skinner were by far the two leaders, with Austin, Kimball, Estey, Kilgen, Hook and Hastings and others following. Calling for definite propositions from about a dozen builders I found a very wide divergence in prices. Casavant and Skinner were both so expensive that I felt we could not get sufficient organ for the tentative appropriation available. I was very reluctant to give up the Casavant, because several of these instruments which I had examined in Victoria and Vancouver, B. C., had impressed me profoundly by their great beauty and smoothness of tone.

An Austin which was installed here last spring proved somewhat disappointing to me. Some of the stops were beautiful, but the instrument as a whole seemed cold and not appealing. The Austin representative was very anxious to secure the contract, and in fairness to him and my duty to the church, I made a very thorough investigation of these organs, examining eight or ten different instruments from a small two-manual to the large four-manual in Dr. Mathew's Church at Seattle. The farther I went the more I felt the lack of that indefinable something, which, for want of a better term, I would call an appealing "Heart" quality which the Casavant and the Skinner had.

I considered also the the Kimball and the Estey quite favorable for a time and believe they are both reliable organs. The latter did not appeal to me so much. Some of the individual stops were beautifully voiced, but there seemed to be something lacking when you wanted to build up to full organ. This lack I feel is due to their way of using Capped basses to their open stops. They claim you lose nothing by this system of construction; but, anyway, the lack seems to be there.

In the last summer, a friend of mine, Professor B. R. Hirschler, Dean of the School of Music of the College of Emporia, Kansas, to whom I had written concerning his large four-manual Moeller, first called my attention to the Reuter, saying that they were built on the same principles as the Casavant and very closely resembled them in tone quality. This greatly interested me and I began to investigate at once. I found that there was a small Reuter in the northern part of the state and I went to see it. From the very first trial of it I was impressed with the great beauty of tone and the smooth prompt action. I then wrote to many users of the Reuter Organs and in every case the reports were very favorable, in some cases almost extravagantly so. In October, Clarence Eddy, the famous organist, was here and I had a conference with him on the organ matter. Of the three propositions which we then had settled on, he pronounced that by the Reuter people as by far the best. He said he was very familiar with their work and considered it among the very finest done in the country today.

As we were not in any very great hurry to close the contract, we decided to wait until the organ in the Oregon State University was installed and I should have an opportunity to see one of their larger instruments. My impression of this organ only confirmed what I had found in the smaller one; from the very first trial of it I felt that there is our organ. In order to feel perfectly sure I went to a nearby church and tried out a large Austin and then went back to the Reuter. This absolutely confirmed me in my choice, and I confidently expect to have by far the finest organ in the northwest by next fall.

I have hertofore only spoken of the tone of the organ. It is almost superfluous to speak at length of the workmanship and the materials which enter into the construction of the organ, for if a good one results it is evident that fine materials and good workmanship has entered into the making of the instrument. An important feature is the unique roller contact which is used. This makes for much greater sureness of contact and fewer silent notes than other systems. In a word, I was impressed with the exceptionally fine workmanship and the very high grade of materials found in every part of the Reuter Organ.

I hope this will answer, at least in a measure, your question: Why I recommend the Reuter Organ to our committee.

Very sincerely yours,

B. F. WELTY,
(Organist First Presbyterian Church)
Tacoma, Washington.

UNIVERSITY OF OREGON

EUGENE

Eugene, Oregon,
March 3, 1926

Reverend J. Randolph Sasnett,
Aberdeen, Washington.

My Dear Dr. Sasnett:—

I have your inquiry of a couple of days ago in regard to the Reuter Pipe Organ here at the University of Oregon. After a year and a half of steady usage, practically all day every day, I simply cannot recommend the Reuter Organ too highly. Certainly they did a superb job for us, and if we were to purchase another organ tomorrow, it would undoubtedly be a Reuter.

As you know, I spent a great deal of time in investigation of the leading American makes before I made this decision about two years ago. I have been an organist for twenty years, and have had a great deal of experience in organ construction and care. I made a most exhaustive examination of the mechanism as well as tone quality of leading makes and I have never for a minute regretted my decision, nor have I found out anything since that would lead me to do it differently a second time.

Certainly the voicing of this instrument is not surpassed by any that I know of. Everyone that hears it declares it to be especially appealing. The mechanism is reliable, responsive and quick, and is a delight to any organist. We had Charles M. Courboin, the famous Belgian organist, here about three weeks ago. He expressed himself as being delighted with this instrument, its beautiful tone, its "playability," and especially its very quick and responsive action. The first thing he did was to turn on the full organ and play a series of heavy, rapid, staccato chords to determine if he could possibly overload the action. He was very delighted to discover that the organ was more than equal to any demands that he could possibly put upon it. He also said it was one of the best instruments that he played on his recent tour here in the Northwest.

The workmanship on the inside of the console and all through the organ chambers shows a fineness and a craftsmanship not duplicated in most American organs. The men who manufacture this organ, I am convinced, are as sincere and honest a group as there is engaged in the business, and they stand absolutely ready to make their guarantee good.

As I stated above, we have used this organ practically all day, every day, for a year and a half, since it is used not only for recitals, Sunday Vesper Services, and all manner of concerts, but also for lessons and practice. It is going practically all the time. In spite of that fact, I do not believe that I have spent over thirty minutes in actual repair work on the organ aside from tuning. Out of some four thousand magnets I have replaced two in eighteen months. Each job required about two and a half or three minutes. Altogether, I can honestly say that the instrument has given us not one bit of trouble, but only the most complete satisfaction. Dean Landsbury and all my collaborators here will bear me out fully in this statement.

I do hope that you people there at Aberdeen will have the good fortune to have your organ made by the Reuter Company. Personally, I am confident that no other factory does at this time turn out so fine an instrument at so small a

cost to the purchaser. Courboin and every other organist of repute who has seen this instrument, including Dr. Frank L. Seely, Warden of the American Guild of Organists, have expressed their amazement that we secured so large and so fine an instrument for as few thousand dollars as we paid.

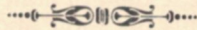
If your committee should find it possible to come to Eugene to see this instrument, I should be more than happy to go over it with them in detail.

With very best personal regards, I remain, as always,

Sincerely yours,

(Signed) JOHN STARK EVANS,
Associate Dean.

JSE—M



FIRST BAPTIST CHURCH
MERIDIAN, MISSISSIPPI

OFFICE OF
L. R. CHRISTIE, PASTOR

January 11, 1926.

Reuter Organ Company,
Lawrence, Kansas.

Gentlemen:—

Mr. James W. Frilick, the Chairman of our Music Committee, asked me to report to you about the organ which we purchased several months ago.

It gives me real pleasure to tell you that the instrument has been perfectly satisfactory in every respect. Those who are capable of intelligent judgment have repeatedly pronounced it one of the sweetest toned instruments in this part of the South. It is essentially a church organ, made to be adapted to the real purposes of church worship.

We do not see how the action could be better. Every organist who has played on it has been enthusiastic about the touch and the immediacy of the response, as well as the rich tonal quality of the organ.

We are proud of our instrument, and appreciate the fine co-operation you gave in building it for us.

Sincerely yours,

(Signed) L. R. CHRISTIE

WILLIAM JOHN HALL
MUSICAL ARTS BUILDING
ST. LOUIS, MO.

August 20, 1925.

The Reuter Organ Co.,
Gentlemen:

Recently, when in Chicago, I had the pleasure of being introduced to one of your organs, through the wishes of a friend of mine, an organist of great prominence, and one whose word was absolutely to be relied upon. As I am always interested in any improvement in organ tone and construction I visited the church where this organ was, and found one of your instruments, a three manual organ.

Up to this time, your name did not mean much to me, as I had never had the opportunity of becoming acquainted with any of your work. I listened to the organist of the church play for some time, and was forcibly struck with the beauty of tone, especially for church work, and the marvelous blending of tone of the entire instrument. There was nothing offensive in any way with any of the combinations, and from the softest tone to the full power of the organ there was always that beautiful mellow quality that appealed to me so strongly, when compared to so many of the present day instruments where noise seems to be the predominant feature, and quantity takes the place of quality. I could not find anything but a pure tone, while playing on it myself for some time, and I certainly want to congratulate you on having been able to hold to the old traditions of organ building, where beauty of tone and individuality of stops, with the full mellowness of the open diapasons, always stood out as the dominant feature of organ building. There was, in fact, almost a reverential feeling being given out from the real churchly tone of every one of the stops.

Allow me to congratulate you upon having held to the main purpose for which organs are needed at the present time, that of helping in the work of the church, by being able to interpret the works of the masters with the effects they desire in writing for the church and its ministry.

Wishing you every success, I am

Most sincerely,

WILLIAM JOHN HALL,
Organist and Director of Music, Temple Israel.
Organist, Tuscan Lodge, A. F. A. M.
Organist and Choir Director, Church of the Messiah.

REV. JOS. AUGUSTINE KERN
ORGANIST AND CHOIR MASTER
HOLY TRINITY CHURCH

New Ulm, Minn.,
May 12, 1925.

The Reuter Pipe Organ Company,
Lawrence, Kansas.

Gentlemen:

Two years ago you have installed a Two-Manual and Pedal Organ in our Holy Trinity Church. After a two years trial I deem it my duty to express the well deserved enthusiastic appreciation of your splendid work. The electric action and the electric-pneumatic stop action correspond in perfect precision. No slightest trouble arose in this course of time. The organ stands as a fine monument of real Artistic Organ Building. The voicing is magnificent.

The selections of the stops blend beautifully in harmonious tone color. The organ has an imposing Diapason character which makes it a real liturgical church organ from every point of view.

Every visitor and guest-organist comments most favorably on the excellent beauty of tone, and the trilling crescendo power from the softest hardly audible pianissimo to the forte fortissimo, which is made possible with the two sound-proof expression chambers, in which the entire organ is built. I consider the expression chambers one of the finest assets for a Choral Organ. The organ is a perfect success; and I shall not fail to recommend your firm to any one interested in securing an organ worthy of a house of God.

With all good wishes for your continuous success, I am

Very respectfully yours,

(Signed) REV. J. AUGUSTINE KERN,
Organist and Choirmaster.

H. C. FEIL
CONCERT ORGANIST
INSTRUCTION IN PIANO AND ORGAN
KANSAS CITY, MO.

November 12, '24.

B. F. Welty,
Tacoma, Wash.

My dear Mr. Welty:—

Your letter of November 7th at hand and I am taking great pleasure in answering questions therein and giving you any information that might be of benefit to you.

I have a great friend here in K. C. who is connected with Skinner Organ Co. Last spring (I might add here that I consider him an authority on organs) he came to me and said that he had been investigating the Reuter Organs and that he had been thru the factory and he considered them in the same light as the Skinner and Austin Cos. organs. He said that he was very much surprised and that people in this part of the country can be congratulated in having a company of such high standard in this community. Furthermore, he said that he was considering handling the Reuter Organs himself, which he is now doing.

I've been studying and watching the Reuter Organs. I've "opened" quite a number of their organs in this part of the country and found them all very fine.

Their action is as good as Skinner and Austin. The material is of the very best and in every organ is put new material. And in regard to voicing—well, I consider it a valuable thing if an Organ Company voices an organ to suit the organist or the party in authority. This is exactly what they are willing to do. The Reuter people are doing that, and that is the reason why I favor them and speak well of them. Great many organ builders, I found, wouldn't bother and many would resent even a suggestion as to the voicing. To them an organ is voiced! And any change or improvement wouldn't be considered for a minute. I can say that I personally have had altercations with organ builders on that question. They *wouldn't* do a thing! and many times I *couldn't* do anything. The only safe way to get what you want (outside of Reuter) is to have it stipulated in the contract to the effect that everything pertaining to the organ should be supervised and passed by the organist or some authority on pipe organs. Verbal agreements are nothing! That would be a good suggestion for your church.

The Reuter people recently completed a 3 manual and Echo organ here in St. Peter's church which I supervised. It was opened last August by myself with a recital. I want to say that it's a beauty—tonally and in every other respect. In my estimation they are thoroughly capable of building as large an organ as anybody should want, be it 2, 3, 4 or 5 manuals. They are thoroughly equipped to build large organs. I am very enthusiastic over the Reuter Organs. They take a pride in their work, and seem to study out means of improving in every department. Naturally, for that reason

they have attained a high standard! I am sure that you will be delighted and greatly pleased with a Reuter Organ, because they really voice their organs wonderfully.

This is rather a lengthy epistle on this subject, but it's about the Reuter Organ and that's excuse enough for the length of this script.

I hope that I have helped, some. In conclusion I wish to reiterate that I have no material (financial) interest in the Reuter Company whatsoever. It's only on account of their splendid work and their willingness to please, their artistic ability combined with honesty, that prompts me to assist them.

Very truly,

(Signed) HANS C. FEIL.

P. S.: The reason that Reuter offers you more for the money is because they are ascending toward a name and high standard. In a few years or possibly one year they, too, will go up in price on account of a name such as Skinner and Austin, which, of course, is their right. They see a chance to become the foremost organ builders in this country and to attain that they must sacrifice a little.

I am familiar with all makes of organs. You'll not be disappointed with a Reuter Organ.

H. C. F.

FIRST LUTHERAN CHURCH

ADOLPH H. POPPE, PASTOR

LITTLE ROCK, ARKANSAS

December 9, 1924.

Frilick-McDonald Co.
Meridian, Miss.

Gentlemen:

Your letter of inquiry in re. organ from Reuter received. What do I think of the Reuter Organ? If I had another organ to buy I would today give the contract to the Reuter Organ Company. The firm treated me wonderfully. I got ALL I contracted for.

I visited all the organ plants from Little Rock to Milwaukee, Wis., and after mature deliberation we gave them the contract. One organ company who put an organ in a local church later than ours has already shipped back half of same for repairs. I would not change mine for a Skinner here at double the price. We have had no expense with our instrument excepting tuning. Our organ is better today than when we bought it.

If you wish a copy of the disposition of my organ, let me know and I will be glad to send you one.

Should you wish to see and try out my organ it is ready for you at any time. All I can say is: You will be satisfied if you buy a Reuter. Am glad to be of service to you.

Sincerely yours,

REV. DR. A. H. POPPE,
314 E. 8th St.,
Little Rock, Arkansas.

Emporia, Kansas,
December 8, 1924.

Mr. James W. Frilick,
Meridian, Mississippi.

My Dear Mr. Frilick:—

Your inquiry regarding the Reuter Organ Company building that organ is at hand and I hasten to reply. I have never had dealings with a fairer and more trustworthy company than the Reuter people. They do their work well and fulfill every obligation. I could not say anything that would be too strong regarding their honor and their carefulness in fulfilling their contracts. We have been more than satisfied with the organ. It is fine toned and the voicing is the best. The workmanship is perfectly satisfactory. Our organ has been in two years and the service it has given us has been of the best. I do not believe you could do better than to have them install your organ. Our organ is a three-manual organ. Wishing you every success in your work, I am

Most cordially,

(Signed) JOHN H. J. RICE,
Pastor First Congregational Church,
Emporia, Kansas.

KANSAS DISTRICT
OF THE
WALTHER LEAGUE
INTERNATIONAL ASSOCIATION
ORGANIZED 1893
PRO ARIS ET FOCIS

Independence, Kansas,
February 3, 1926.

Reuter Organ Company,
Lawrence, Kansas.

Dear Sirs:—

Now that we have had nearly a month's use of the organ, I take this opportunity to let you know OUR opinion on the organ. I am going very strong on the "our," for a prophecy which I made two years ago fully came true. My prophecy at the time was that if we only would first have the organ that then those who mostly opposed the purchase of a new organ would be the greatest boosters FOR it. And so it is! A number of people that absolutely would not support the move of purchasing a new organ, but rather tried to influence others that there was no need of a new instrument—these very ones had me play that organ several evenings until late at night and could not get enough of it. And why? They had never heard such an instrument. Had a short concert last Sunday evening—and THEY were all there.

The organ is giving perfect satisfaction in every respect. All the prominent musicians of the city have been out by this time and have only words of praise as to quality of tone, perfect action, and skillful construction of same.

I am sending you this letter wholly unsolicited. I simply consider it my duty to express to you my personal opinion as well as the opinion of Zion Lutheran Church in appreciation of the services rendered in furnishing us with such a wonderful instrument.

Yours very sincerely,

(Signed) A. F. DROEGEMUELLER.

FAITH EVANGELICAL LUTHERAN CHURCH
EIGHTY-THIRD AND SAGAMON STREETS

CHICAGO, ILLINOIS

REV. E. V. HASERODT, PASTOR
8308 SOUTH SAGAMON STREET

Chicago, Ill.,
October 5, 1925.

Reuter Organ Company,
Lawrence, Kansas.

Gentlemen:—

Last evening our Reuter Organ received its supreme test. Our dedicatory concert was given by Mr. E. O. Haase, our organist, and a member of our church. Every possible demand was made upon the organ and it responded. During our entire dedicatory services, six in number, the organ stood up wonderfully.

Regarding the work done by Mr. E. Bircher, the erector, I must also say a word. His work was done as neatly and exactly as any done in the church. Everything had to be just so before he was satisfied. Usually "Good enough" was the experience we had with many of the other mechanics erecting our building. I consider Mr. Bircher the most exact and conscientious mechanic I met during the building of our entire church.

Mr. Bircher was no doubt spurred on to this neatness and exactness by the high quality of materials and workmanship of the entire organ from the console to the framework and the smallest pipe.

The action is so rapid and responsive that no matter how fast or how many times the key is repeated there is always a corresponding note. I tried all the stops separately and I could not find one that did not respond immediately. I had much enjoyment trying to find one that would not respond but was unsuccessful.

However, that which I prize most in our organ is its tone quality. The voicing is certainly beautiful. There is not a bit of harshness, no matter how few or how many stops are used. Even when "Full Organ" is played there is not any shrillness but only sweet-toned, beautiful MUSIC. I do not hesitate to say that if I should ever be placed in a position where it was necessary to purchase another organ The Reuter Organ would be my first choice.

Very sincerely yours,

(Signed) E. V. HASERODT

Additional List of Reuter Installations

(Up to October 1, 1927)

Episcopal Churches

	Manuals
St. Mark's Cathedral	Hastings, Nebraska . . . 3
St. Clement's Episcopal	Seattle, Washington . . . 2
Emanuel Episcopal	Memphis, Tennessee . . . 2
St. Luke's Episcopal	Bartlesville, Oklahoma . . . 2
St. Mary's Episcopal	Kansas City, Missouri . . . 3
St. Luke's Episcopal	Denver, Colorado . . . 2

Christian Churches

First Christian	Coffeyville, Kansas . . . 4
First Christian	Richmond, Missouri . . . 2
Church of Christ	Chanute, Kansas . . . 2
First Christian	Lawrence, Kansas . . . 2
Woodlawn Church of Christ	Lake City, Iowa . . . 2
Highland Park Church of Christ	Des Moines, Iowa . . . 2

Lutheran Churches

Trinity Lutheran	Beatrice, Nebraska . . . 2
Evangelical Lutheran	Neillsville, Wisconsin . . . 2
Zion Lutheran	Chippewa Falls, Wisconsin . . . 2
Trinity Evangelical Lutheran	Marcus, Iowa . . . 2
Zion Lutheran	Snohomish, Washington . . . 2
St. Paul's Lutheran	Hastings, Nebraska . . . 2
St. Paul's Lutheran	West Point, Nebraska . . . 2
Trinity Evangelical Lutheran	Dallas, Texas . . . 2
St. Paul's Lutheran	Melrose Park, Illinois . . . 3
Evangelical Lutheran, Zion's	Independence, Kansas . . . 2
Faith Evangelical Lutheran	Chicago, Illinois . . . 3
Emanuel Evangelical Lutheran	Aurora, Illinois . . . 2
Emanuel Lutheran	Bremen, Kansas . . . 2
St. Stephanus Lutheran	St. Paul, Minnesota . . . 3
First Lutheran	Tulsa, Oklahoma . . . 2
St. Mark's Lutheran	Kansas City, Missouri . . . 4
St. John's Lutheran	Fairfax, Minnesota . . . 2
Lutheran Bethel	Holdredge, Nebraska . . . 3
St. Paul's Lutheran	Wichita Falls, Texas . . . 2
St. John's Lutheran	Clarinda, Iowa . . . 2
St. Paul's Lutheran	Enid, Oklahoma . . . 2
St. John's Lutheran	Wood Lake, Minnesota . . . 2
Lutheran Church	Wall Lake, Iowa . . . 2
Trinity Lutheran	Omaha, Nebraska . . . 2
Trinity Lutheran	Fremont, Nebraska . . . 2
St. John's Lutheran	Adair, Iowa . . . 2
Lutheran Zion	Morrison, Wisconsin . . . 2
St. John's Lutheran	Marion, Wisconsin . . . 2
St. Pauls Lutheran	Sioux City, Iowa . . . 2

Evangelical Churches

Evangelical Frieden's Church	Norwood, Minnesota	2
St. Peter's Evangelical	Kansas City, Mo., Echo and	3
Eden Immanuel Evangelical	St. Louis, Missouri	3
Evangelical Church of Peace	Rochester, Minnesota	2

Congregational Churches

Congregational Church	Eureka, Kansas	2
First Congregational	McPherson, Kansas	2
First Congregational	Eugene, Oregon	2
First Congregational	Geneva, Nebraska	2
First Congregational	Topeka, Kansas	2
Pilgrim Congregational	Portland, Oregon	2

Methodist Churches

First Methodist Church	Faribault, Minnesota	2
Warren Chapel A. M. E.	Chattanooga, Tennessee	2
Trinity M. E.	Topeka, Kansas	2
First M. E.	La Junta, Colorado	2
St. Paul's M. E.	Ft. Worth, Texas, Echo and	3
Whaley Memorial	Gainesville, Texas	2
First M. E.	Medford, Oregon	2
First M. E.	Sacramento, California	3
First M. E.	Oroville, California	2
M. E. Church	Cherryvale, Kansas	2
Methodist Church	Ottawa, Kansas	3
Epworth M. E.	Tacoma, Washington	2
M. E. Church	Eureka, Kansas	2
First Methodist	Manhattan, Kansas	3
Trinity M. E.	Hutchinson, Kansas	2
Washington Avenue M. E.	Parsons, Kansas	2
M. E. Church, South	Stillwater, Oklahoma	2
First M. E.	Wilmington, California	2
First M. E., South	Long Beach, California	2

Presbyterian Churches

Presbyterian Church	Alva, Oklahoma	2
Bethel Presbyterian	West Union, Iowa	2
First United Presbyterian	Pittsburg, Kansas, Echo and	3
Central Presbyterian	Waco, Texas, Echo and	2
Hemphill Street Presbyterian	Ft. Worth, Texas	2
First Presbyterian	Tacoma, Washington	4
First Presbyterian	Eldorado, Kansas	2
First Presbyterian	Okmulgee, Oklahoma	4
Second Presbyterian	Oklahoma City, Oklahoma	2
First Presbyterian	Dodge City, Kans., Echo &	3
First Presbyterian	Joliet, Illinois	3
United Presbyterian	Milwaukee, Wisconsin	3
Westport Avenue Presbyterian	Kansas City, Mo., Echo and	3
First Presbyterian	Medford, Oregon	3
Westminster Presbyterian	Sacramento, California	4
Westminster Presbyterian	Pasadena, Calif., Echo and	4
Miller Park Presbyterian	Omaha, Nebraska	2

Catholic Churches

Manuals

St. Leo's Catholic Church	Minot, North Dakota	2
Holy Trinity	New Ulm, Minnesota	2
St. Michael's	St. Micheal, Minnesota	2
College of St. Catherine	St. Paul, Minnesota	3
Church of Assumption	Topeka, Kansas	2
St. Mark's	Shakopee, Minnesota	2
Academy of Our Lady of Peace	San Diego, California	2
Academy of Good Counsel	Mankato, Minnesota	3
St. Basil's R. C.	Chicago, Illinois	3
St. Paul's Seminary	St. Paul, Minnesota	2
Nazareth Motherhouse	Concordia, Kansas	2
Holy Trinity	Kansas City, Missouri	2
St. Anthony's	New Orleans, Louisiana	3
St. Adelbert's	Silver Lake, Minnesota	2
Holy Ghost	New Orleans, Louisiana	2
St. Alphonsus	Seattle, Washington	2
St. Maurice	New Orleans, Louisiana	2
St. Mary's	St. Paul, Minnesota	3
St. Mary's	Eugene, Oregon	2
St. Mary's	Alexandria, Minnesota	2
St. Mary's Pro. Cathedral	Bismarck, North Dakota	2
St. Vincent's Home for Aged	Seattle, Washington	2
Providence Hospital	Seattle, Washington	2

Baptist Churches

First Swedish Baptist	Topeka, Kansas	2
First Baptist	Medford, Oregon	2
First Baptist	Pittsburg, Kansas	2
First Baptist	Meridan, Mississippi	3
First Baptist	Iola, Kansas	2
First Baptist	Minden, Louisiana	3
First Baptist	Mart, Texas	2
Festus-Crystal City Baptist	Festus, Missouri	2
Mt. Gilead Baptist	Fort Worth, Texas	2
First Baptist	McMinnville, Oregon	2
University Baptist	Minneapolis, Minnesota	3
First Baptist	Eugene, Oregon, Echo and	3

Masonic Temples

Scottish Rite Temple	Long Beach, Calif., Echo &	2
York Rite Temple	Long Beach, Calif., Echo &	2
Siloam Lodge No. 225 A. F. & A. M.	Topeka, Kansas	2
Za Ga Zið Shrine Temple	Des Moines, Iowa, Echo &	4

Theatres

Strand Theatre	Wichita Falls, Texas	Echo
Palace Theatre	El Paso, Texas	3
Iris Theatre	Houston, Texas	2
Arcadia Theatre	Tyler, Texas	2
Auditorium Theatre	Crockett, Texas	2

Theatres

	Manuals
Capitol Theatre	New Braunfels, Texas 2
Queen Theatre	Abilene, Texas 2
Broadway Theatre	Cisco, Texas 2
Mayflower Theatre	Florence, Kansas 2
Plaza Theatre	Paris, Texas 2
Varsity Theatre	Lawrence, Kansas 3
Palace Theatre	Corpus Christi, Texas 3
Majestic Theatre	Wichita Falls, Texas 2
Mission Theatre	Amarilla, Texas 2
Booth Theatre	Independence, Kansas 2
Vernon Theatre	Vernon, Texas 2
Ellanay Theatre	El Paso, Texas 3
Florence Theatre	Los Angeles, California 2
Ward Theatre	Pismo Beach, California 2
Arcadia Theatre	Dallas, Texas 4
Florentia Theatre	Los Angeles, California 2
Columbia Theatre	Junction City, Kansas 2
Colonial Theatre	Kansas City, Missouri 2
Lyric Theatre	New Ulm, Minnesota 2
Harlandale Theatre	San Antonio, Texas 2
Beacon Hill Theatre	San Antonio, Texas 3
Highland Park Theatre	San Antonio, Texas 2
Alamo Heights Theatre	San Antonio, Texas 2
Main Avenue Theatre	San Antonio, Texas 2
Washington Park Theatre	Denver, Colorado 2

Institutions

University of Oregon	Eugene, Oregon 4
Carlton College	Northfield, Minnesota 2
College of Emporia	Emporia, Kansas 2
Lutheran Teachers Seminary	Seward, Nebraska 3
Lutheran Teachers Seminary	Seward, Nebraska 2
Lutheran Teachers Seminary	Seward, Nebraska 2
St. Mary's Academy	Los Angeles, California 2
Doane College	Crete, Nebraska 3

Miscellaneous Churches

Salem's Reformed Church	Alleman, Iowa 2
Sunnyside Seven Day Adventist	Portland, Oregon 2
Temple Beth Israel	Portland, Oregon 4
American Reformed Church	Orange City, Iowa 2
First Reformed Church	Los Angeles, California 2

Miscellaneous

Residence of W. G. Redmond	Dallas, Texas 3
Dunn Funeral Home	Des Moines, Iowa 2
Reynolds & Eberle Mortuary	Pasadena, California 2
Radio Station KMA	Shenandoah, Iowa 2
East & West Dinner Shop	Denver, Colorado 2
New Orndorff Hotel	El Paso, Texas 2