

IRVIN M. SMITH

Chapel of the Four Seasons

presents

First Season
of

Organ Concerto

On the New Three Manual

M. P. Moller Pipe Organ

DAVID CRAIGHEAD

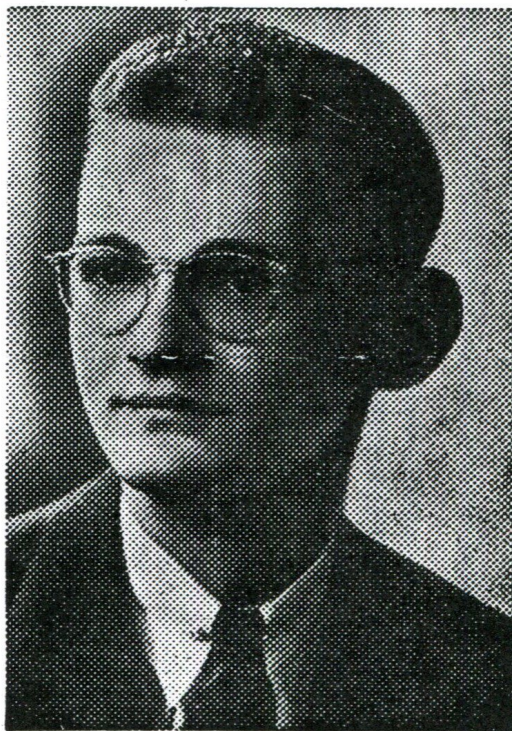
TUESDAY AND WEDNESDAY

JUNE 1 AND 2, 1954

8:15 p.m.

1050 Cayuga Street
Santa Cruz, California

David Craighead - -



*Organist, Pasadena Presbyterian
Church. Faculty, Occidental College,
Los Angeles*

David Craighead's musical training includes piano study with the late Olga Steeb, organ with Clarence Mader and four years at the Curtis Institute in Philadelphia with Dr. Alexander McCurdy. He has held positions at the Bryn Mawr Presbyterian Church of Bryn Mawr, Pennsylvania, and the Westminster Choir College. He is currently organist of the Pasadena Presbyterian Church and a faculty member of Occidental College.

The Program

I

JOHANN SEBASTIAN BACH SINFONIA FROM CANTATA No. 146

Bach in several instances rearranged his own compositions for different combinations of instruments. Thus the familiar Allegro movement from the violin concerto in D Minor appears also in the D Minor concerto for clavier, and again as the Sinfonia to the 146th Cantata, where the organ joins the orchestra as the solo instrument. The reduction for organ alone is by Marcel Dupre.

~~FLOR PEETERS~~ *Handel* *Aria* ~~ARIA~~

Flor Peeters, organist of the Metropolitan Cathedral of Belgium at Malines, has become well known in the United States both as a recitalist and as a composer. This composition is a broad melody of classic simplicity and beauty.

JEAN PHILIPPE RAMEAU

THE ROLL CALL OF THE BIRDS
THE HEN

JOHANN SEBASTIAN BACH

PRELUDE AND FUGUE IN D MAJOR

The importance of Bach hardly requires special mention. In addition to an unparalleled technical perfection, his glorious works speak the language of God and Eternity, and the passing centuries find them to be an ever growing monument of imperishable faith and beauty.

II

CESAR FRANCK

FANTASIE IN A

Franck, although Belgian by birth, is considered the father of the modern French school of composition. This Fantasie is one of three pieces written in 1878 for the inauguration of the organ the Trocadero in Paris.

III

ROBERT ELMORE

RHUMBA

Modern composers are more and more adapting dance rhythms for the basis of serious music. Here the fascinating rhythm of the rhumba is used as the basis of a brilliant concert study, with special emphasis on a virtuosic solo pedal part. Robert Elmore is organist of Holy Trinity Church in Philadelphia. He has dedicated this composition to Claire Coci.

MRS. H. H. A. BEACH

PRELUDE ON AN OLD FOLK TUNE :

"THE FAIR HILLS OF EIRE, O"

*Bear the love of my heart to my land far away,
And the Fair Hills of Eire O;
And to all of Eivir's race that in her valleys stay,
And the Fair Hills of Eire O.*

*That land of mine beloved, where the brown thrush's song
Fills hazel glen and ivy close the summer twilight long,
O how woeful swells his strain for the downfall of the strong
On the Fair Hills of Eire O!*

- - translation by Padraic Colum

LOUIS VIERNE

SCHERZO FROM SECOND SYMPHONY

FINAL FROM SIXTH SYMPHONY

Vierne was organist of the Cathedral of Notre Dame in Paris until his death in 1937. He was a pupil of Franck and Widor, whose tradition he continued with his six symphonies. The Sixth Symphony is dedicated to the memory of the great organ virtuoso Lynnwood Farnum.

BE SURE TO HEAR - - Miss Clair Coci. Wednesday and Thursday, July 21 and 22, 1954, 8:15 p. m. HERE at the Chapel of the Four Seasons.



GREAT ORGAN (UNENCLOSED)

8' Principal	61 pipes
8' Gemshorn	61 pipes
4' Octave	61 pipes
2' Fifteenth	61 pipes

SWELL ORGAN

8' Gedeckt	73 pipes
8' Viola	73 pipes
8' Viola Celeste T.G.	61 pipes
4' Koppelflote	73 pipes
2' Blockflote	61 pipes
8' Oboe D'Amore	73 pipes

Tremulant

CHOIR ORGAN

8' Concert Flute	73 pipes
4' Italian Prinzipal	73 pipes

CHOIR ORGAN (CON.)

2 2/3' Rohrnazat	61 pipes
2' Rohrflote	61 notes
Tremulant	

PEDAL ORGAN (UNENCLOSED)

16' Violone	44 pipes
16' Bourdon	56 pipes
8' Violone	32 notes
8' Bourdon	32 notes
4' Bourdon	32 notes

COUPLERS

Swell to Swell	16'
Swell Unison	
Swell to Swell	4'
Great to Great	16'
Great Unison	
Great to Great	4'

COUPLERS (CON.)

Choir to Choir	16'
Choir Unison	
Choir to Choir	4'
Swell to Great	16'
Swell to Great	8'
Swell to Great	4'
Choir to Great	16'
Choir to Great	8'
Choir to Great	4'
Swell to Pedal	8'
Swell to Pedal	4'
Great to Pedal	8'
Choir to Pedal	8'
Choir to Pedal	4'
Swell to Choir	16'
Swell to Choir	8'
Swell to Choir	4'

ADJUSTABLE COMBINATIONS

Pistons No. 1-2-3-4-5 affecting Great Organ
Pistons No. 1-2-3-4-5 affecting Swell Organ
Pistons No. 1-2-3-4-5 affecting Choir Organ
Toe Studs No. 1-2-3-4-5 affecting Pedal Organ
Pistons No. 1-2-3-4-5 affecting Full Organ

ACCESSORIES

Crescendo Indicator Lights
Expression Indicator Lights
Generator Test Light
Expression shade provided for tone opening of Great Organ and Pedal Organ
Same to open automatically when organ is operating. Not controlled from expression pedal

PEDAL MOVEMENTS

Great to Pedal, Reversible, duplicated by manual piston
Swell to Pedal, Reversible, duplicated by manual piston
Choir to Pedal, Reversible, duplicated by manual piston
Sforzando, Reversible, duplicated by manual piston

Balanced Expression Pedal
- Swell Organ
Balanced Expression Pedal
- Choir Organ
Balanced Crescendo Pedal

INSTALLED BY LEO G. SCHOENSTEIN

*The following individuals and firms have each had a part in the
construction and supplying of materials for our new
Chapel of the Four Seasons.*

**PENNIMAN SANTA CRUZ
COUNTY TITLE CO.**

1537 Pacific Avenue
Santa Cruz, Calif.

**FARMERS & MERCHANTS
NATIONAL BANK**

Pacific & Locust
Santa Cruz, Calif.

D. M. McPHETRES

Civil Engineer
840 Front St.
Santa Cruz, Calif.

**ERNEST FRANK
General Contractor**

3006 Bean Creek Road - Rt. 1
Santa Cruz, Calif.

JOHN M. WITTMAN
Mason Contractor
Brick - Stone - Blocks
211 Button Street
Santa Cruz, Calif.

SANTA CRUZ LUMBER CO.

235 River Street
Santa Cruz, Calif.

WEST COAST STEEL CO.

1131 Auzerais Avenue
San Jose 25, Calif.

CENTRAL SUPPLY COMPANY

Cement

Chestnut Street
Santa Cruz, Calif.

SANTA CRUZ GLASS CO.

810 Pacific Avenue
Santa Cruz, Calif.

JAMES DUNN

Cement Contractor
126 Benito Avenue
Santa Cruz, Calif.

FANEUF'S

Plumbing - Tinning - Heating
1207 Water Street
Santa Cruz, Calif.

GRAHAM AND SON

Sand - Gravel - Loam
500 Mt. Hermon Road, Rt. 4
Santa Cruz, Calif.

ANTONELLI BROTHERS

Begonia Gardens
2545 Capitola Road
Santa Cruz, Calif.

**McKUNE METAL PRODUCTS
COMPANY**

"Roof Lighting"
(Aluminum Rafters)
570 Bryant Street
San Francisco, Calif.

Orchids for the Home

ROD McLELLAN COMPANY

1450 El Camino Real — South San Francisco, California